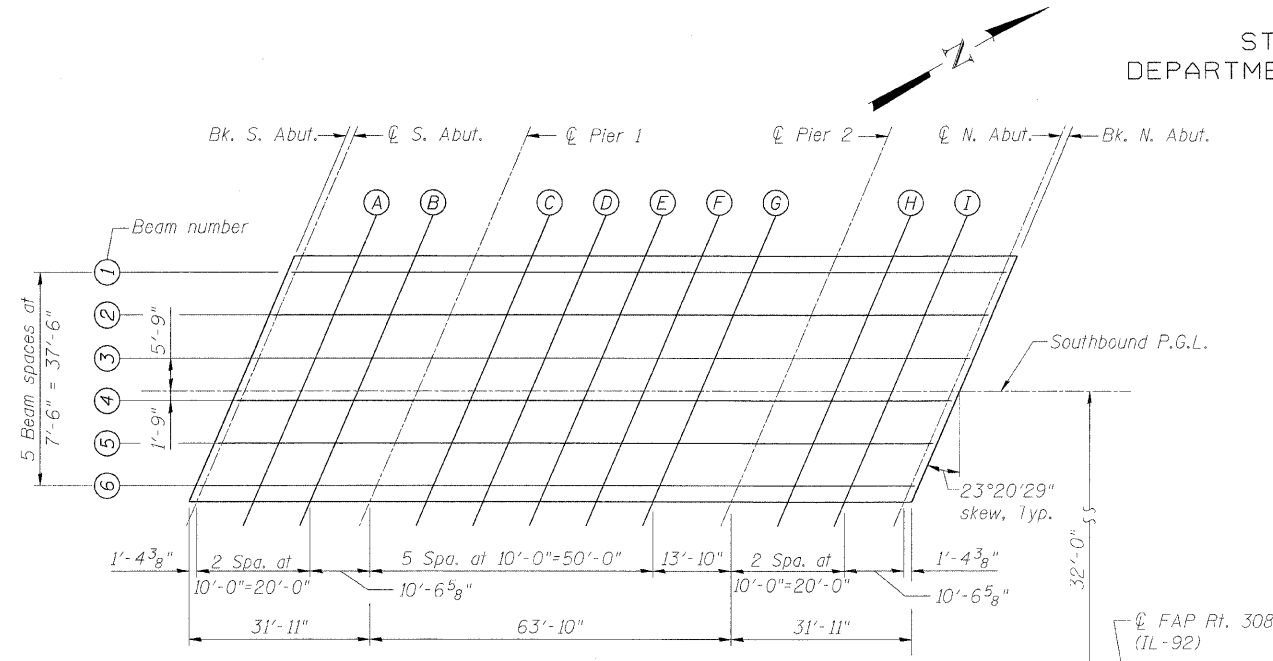


STATE OF ILLINOIS
DEPARTMENT OF TRANSPORTATION



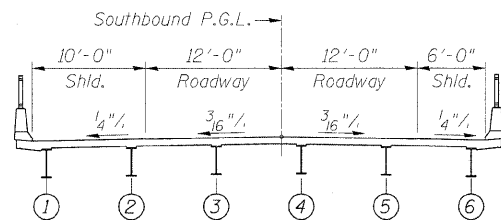
PLAN
(S.B. Structure)

BEAM 1

Location	Station	Offset*	Theoretical Grade Elevations	Theoretical Grade Elevations Adjusted For Dead Load Deflection
Bk. S. Abut.	1470+29.24	-20.75	581.74	581.74
CL S. Abut.	1470+30.61	-20.75	581.74	581.74
A	1470+40.61	-20.75	581.77	581.77
B	1470+50.61	-20.75	581.80	581.79
CL Pier 1	1470+61.15	-20.75	581.81	581.81
C	1470+71.15	-20.75	581.81	581.84
D	1470+81.15	-20.75	581.80	581.86
E	1470+91.15	-20.75	581.78	581.86
F	1471+01.15	-20.75	581.76	581.82
G	1471+11.15	-20.75	581.72	581.76
CL Pier 2	1471+24.99	-20.75	581.65	581.65
H	1471+34.99	-20.75	581.59	581.58
I	1471+44.99	-20.75	581.51	581.51
CL N. Abut.	1471+55.54	-20.75	581.43	581.43
Bk. N. Abut.	1471+56.90	-20.75	581.42	581.42

BEAM 2

Location	Station	Offset*	Theoretical Grade Elevations	Theoretical Grade Elevations Adjusted For Dead Load Deflection
Bk. S. Abut.	1470+26.01	-13.25	581.88	581.88
CL S. Abut.	1470+27.37	-13.25	581.88	581.88
A	1470+37.37	-13.25	581.92	581.92
B	1470+47.37	-13.25	581.95	581.94
CL Pier 1	1470+57.92	-13.25	581.96	581.96
C	1470+67.92	-13.25	581.97	582.00
D	1470+77.92	-13.25	581.96	582.02
E	1470+87.92	-13.25	581.95	582.02
F	1470+97.92	-13.25	581.92	581.99
G	1471+07.92	-13.25	581.89	581.93
CL Pier 2	1471+21.76	-13.25	581.82	581.82
H	1471+31.76	-13.25	581.76	581.76
I	1471+41.76	-13.25	581.69	581.69
CL N. Abut.	1471+52.31	-13.25	581.61	581.61
Bk. N. Abut.	1471+53.67	-13.25	581.60	581.60



CROSS SECTION
(Looking North)

BEAM 3

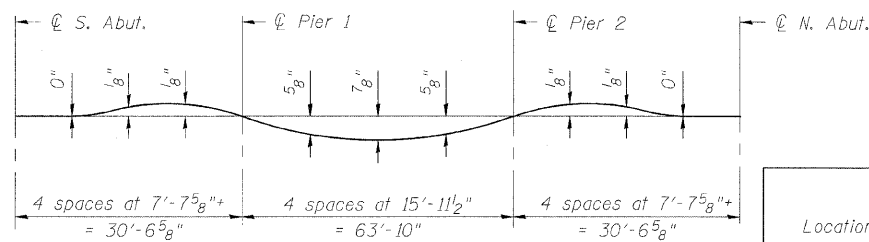
Location	Station	Offset*	Theoretical Grade Elevations	Theoretical Grade Elevations Adjusted For Dead Load Deflection
Bk. S. Abut.	1470+22.77	-5.75	581.99	581.99
CL S. Abut.	1470+24.13	-5.75	582.00	582.00
A	1470+34.13	-5.75	582.03	582.03
B	1470+44.13	-5.75	582.06	582.06
CL Pier 1	1470+54.68	-5.75	582.08	582.08
C	1470+64.68	-5.75	582.09	582.12
D	1470+74.68	-5.75	582.09	582.15
E	1470+84.68	-5.75	582.08	582.15
F	1470+94.68	-5.75	582.06	582.12
G	1471+04.68	-5.75	582.02	582.07
CL Pier 2	1471+18.52	-5.75	581.96	581.96
H	1471+28.52	-5.75	581.91	581.90
I	1471+38.52	-5.75	581.84	581.84
CL N. Abut.	1471+49.07	-5.75	581.76	581.76
Bk. N. Abut.	1471+50.43	-5.75	581.75	581.75

SOUTHBOUND P.G.L.

Location	Station	Offset*	Theoretical Grade Elevations	Theoretical Grade Elevations Adjusted For Dead Load Deflection
Bk. S. Abut.	1470+20.29	0.00	582.07	582.07
CL S. Abut.	1470+21.65	0.00	582.07	582.07
A	1470+31.65	0.00	582.11	582.11
B	1470+41.65	0.00	582.15	582.14
CL Pier 1	1470+52.20	0.00	582.17	582.17
C	1470+62.20	0.00	582.18	582.21
D	1470+72.20	0.00	582.18	582.24
E	1470+82.20	0.00	582.17	582.25
F	1470+92.20	0.00	582.15	582.22
G	1471+02.20	0.00	582.12	582.16
CL Pier 2	1471+16.04	0.00	582.07	582.07
H	1471+26.04	0.00	582.01	582.01
I	1471+36.04	0.00	581.95	581.95
CL N. Abut.	1471+46.59	0.00	581.87	581.87
Bk. N. Abut.	1471+47.95	0.00	581.86	581.86

BEAM 4

Location	Station	Offset*	Theoretical Grade Elevations	Theoretical Grade Elevations Adjusted For Dead Load Deflection
Bk. S. Abut.	1470+19.53	1.75	582.04	582.04
CL S. Abut.	1470+20.90	1.75	582.04	582.04
A	1470+30.90	1.75	582.08	582.08
B	1470+40.90	1.75	582.12	582.11
CL Pier 1	1470+51.44	1.75	582.14	582.14
C	1470+61.44	1.75	582.15	582.18
D	1470+71.44	1.75	582.15	582.21
E	1470+81.44	1.75	582.14	582.22
F	1470+91.44	1.75	582.13	582.19
G	1471+01.44	1.75	582.10	582.14
CL Pier 2	1471+15.28	1.75	582.04	582.04
H	1471+25.28	1.75	581.99	581.98
I	1471+35.28	1.75	581.93	581.92
CL N. Abut.	1471+45.83	1.75	581.85	581.85
Bk. N. Abut.	1471+47.19	1.75	581.84	581.84



DEAD LOAD DEFLECTION DIAGRAM
(Includes weight of concrete only.)

Note:
The above deflections are not to be used in the field if the engineer is working from the grade elevations adjusted for dead load deflections as shown herein.

DESIGNED	CMM
CHECKED	AMK
DRAWN	EF
CHECKED	RWC

LOCHNER
H.W. LOCHNER, INC., CHICAGO, ILLINOIS

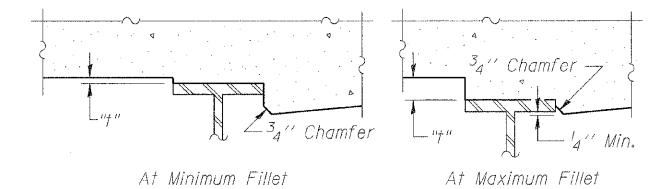
BEAM 5

Location	Station	Offset*	Theoretical Grade Elevations	Theoretical Grade Elevations Adjusted For Dead Load Deflection
Bk. S. Abut.	1470+16.30	9.25	581.90	581.90
CL S. Abut.	1470+17.66	9.25	581.91	581.91
A	1470+27.66	9.25	581.96	581.95
B	1470+37.66	9.25	581.99	581.98
CL Pier 1	1470+48.21	9.25	582.02	582.02
C	1470+58.21	9.25	582.03	582.06
D	1470+68.21	9.25	582.04	582.10
E	1470+78.21	9.25	582.03	582.11
F	1470+88.21	9.25	582.02	582.08
G	1470+98.21	9.25	581.99	582.03
CL Pier 2	1471+12.05	9.25	581.94	581.94
H	1471+22.05	9.25	581.89	581.88
I	1471+32.05	9.25	581.83	581.83
CL N. Abut.	1471+42.60	9.25	581.76	581.76
Bk. N. Abut.	1471+43.96	9.25	581.75	581.75

BEAM 6

Location	Station	Offset*	Theoretical Grade Elevations	Theoretical Grade Elevations Adjusted For Dead Load Deflection
Bk. S. Abut.	1470+13.06	16.75	581.74	581.74
CL S. Abut.	1470+14.42	16.75	581.75	581.75
A	1470+24.42	16.75	581.80	581.80
B	1470+34.42	16.75	581.84	581.83
CL Pier 1	1470+44.97	16.75	581.87	581.87
C	1470+54.97	16.75	581.89	581.92
D	1470+64.97	16.75	581.89	581.95
E	1470+74.97	16.75	581.89	581.97
F	1470+84.97	16.75	581.88	581.95
G	1470+94.97	16.75	581.86	581.90
CL Pier 2	1471+08.81	16.75	581.81	581.81
H	1471+18.81	16.75	581.76	581.76
I	1471+28.81	16.75	581.71	581.71
CL N. Abut.	1471+39.36	16.75	581.64	581.64
Bk. N. Abut.	1471+40.72	16.75	581.63	581.63

* Offsets are taken from Southbound P.G.L.



To determine "h": Elevations of the top flanges of the beams shall be taken at intervals shown herein. These elevations subtracted from the "Theoretical Grade Elevations Adjusted for Dead Load Deflection" shown herein, minus slab thickness, equals the fillet heights "h" above top flange of beams.

FILLET HEIGHTS

TOP OF SLAB ELEVATIONS (SB)
IL ROUTE 92 (CENTENNIAL EXPRESSWAY)
OVER 31st AVENUE
FAP ROUTE 308 SEC. (IHB-2)R
ROCK ISLAND COUNTY
STATION 1470+70.31
STRUCTURE NO. 081-0172 (SB)
STRUCTURE NO. 081-0173 (NB)