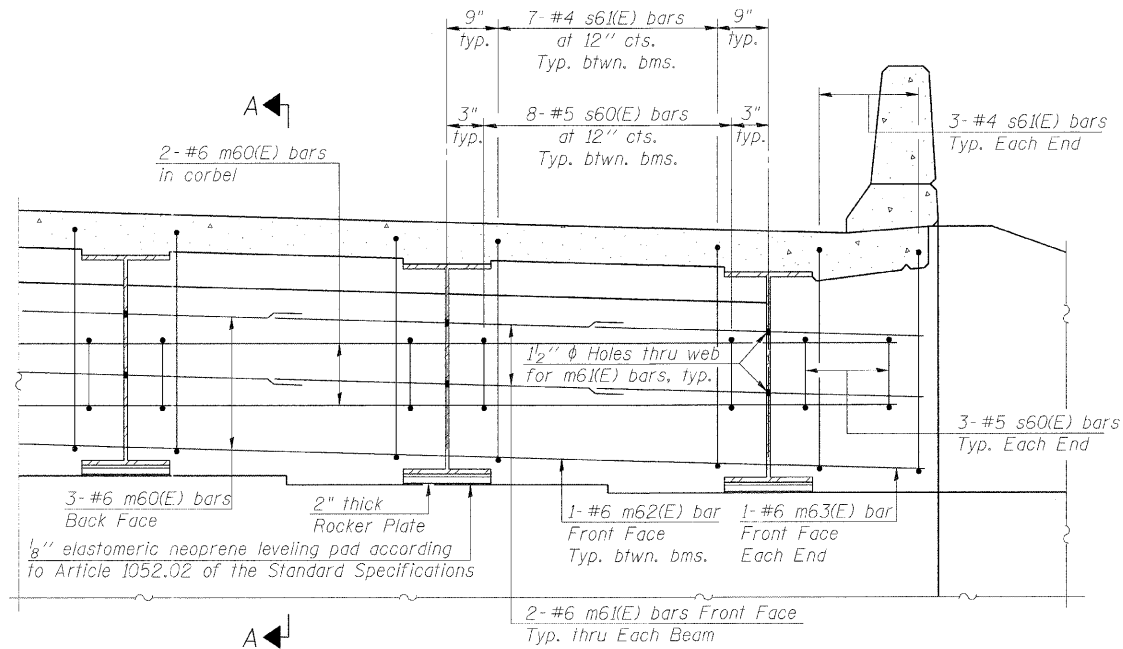


STATE OF ILLINOIS
DEPARTMENT OF TRANSPORTATION

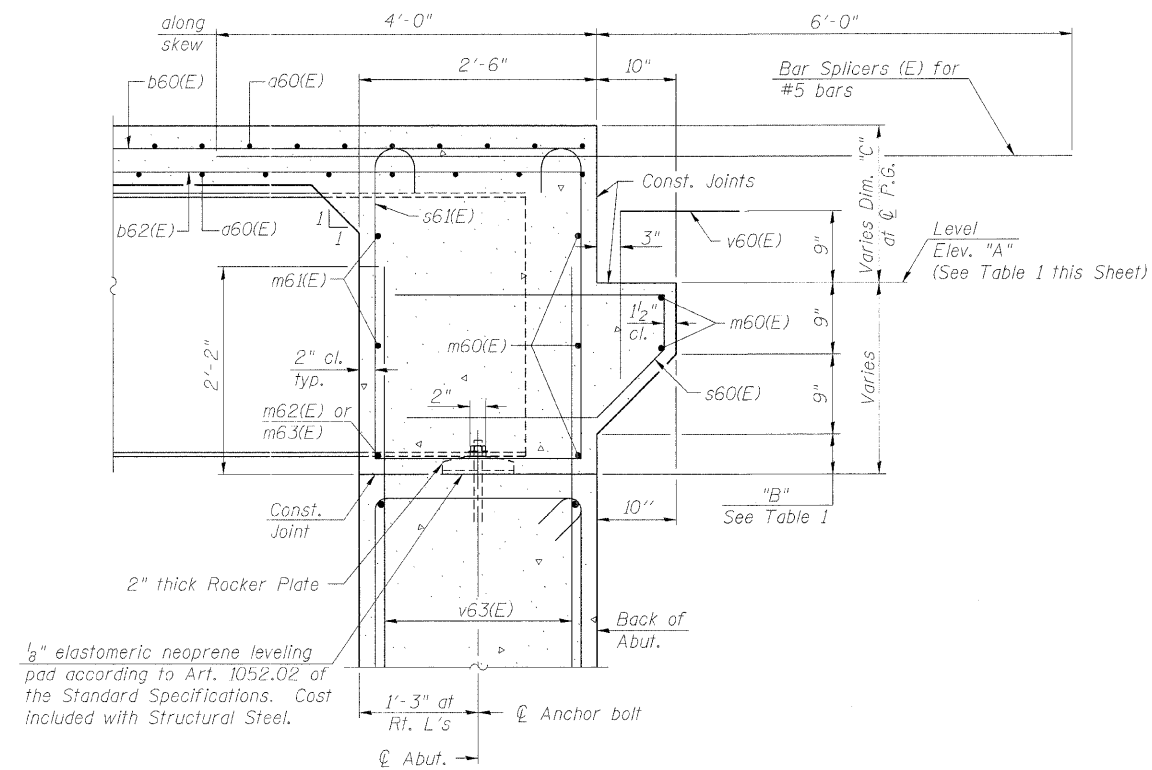
ROUTE NO.	SECTION	COUNTY	TOTAL SHEETS	SHEET NO.	SHEET NO. 10
F.A.P. 308	*	ROCK ISLAND	210	94	31 SHEETS
FED. ROAD DIST. NO. 7	ILLINOIS	FED. AID PROJECT			

Contract #64814 * (1HB, HB-1, VB, HB-2)R



DIAPHRAGM ELEVATION AT ABUTMENT

MIN. BAR LAP
#6 bar = 2'-9"



SECTION A-A

Dimensions at right angles to abutment, except as shown.

TABLE 1

Location	Elev. "A"	Dim. "B"	Dim. "C"
SB South Abutment	580.36	Varies 2 ³ / ₄ " to 5 ³ / ₄ "	1'-8 ¹ / ₂ "
SB North Abutment	580.03	Varies 2 ³ / ₈ " to 5 ³ / ₈ "	1'-10"
NB South Abutment	579.90	Varies 2 ⁵ / ₈ " to 5 ³ / ₄ "	1'-10"
NB North Abutment	580.28	Varies 2 ⁵ / ₈ " to 5 ⁵ / ₈ "	1'-8 ¹ / ₂ "

NOTES

1. Reinforcement bars in diaphragm are billed with superstructure on Sheet No. 11
2. Concrete in diaphragm is included with Concrete Superstructure on Sheet No. 11
3. For details of bars s60(E) and s61(E) see Sheet No. 11
4. The s60(E) and s61(E) bars shall be placed parallel to the beams. Spacing for these bars shall be at right angles to the beams.
5. For rocker plate detail see Sheet No. 15

INTEGRAL ABUTMENT DIAPHRAGM DETAILS
IL ROUTE 92 (CENTENNIAL EXPRESSWAY)
OVER 31st AVENUE
FAP ROUTE 308 SEC. 1(HB-2)R
ROCK ISLAND COUNTY
STATION 1470+70.31
STRUCTURE NO. 081-0172 (SB)
STRUCTURE NO. 081-0173 (NB)

DESIGNED	CMM
CHECKED	JSD
DRAWN	EF
CHECKED	RWC

LOCHNER
H.W. LOCHNER, INC., CHICAGO, ILLINOIS

t:\2082\est-uct\dgn\ZD440235D1.dgn