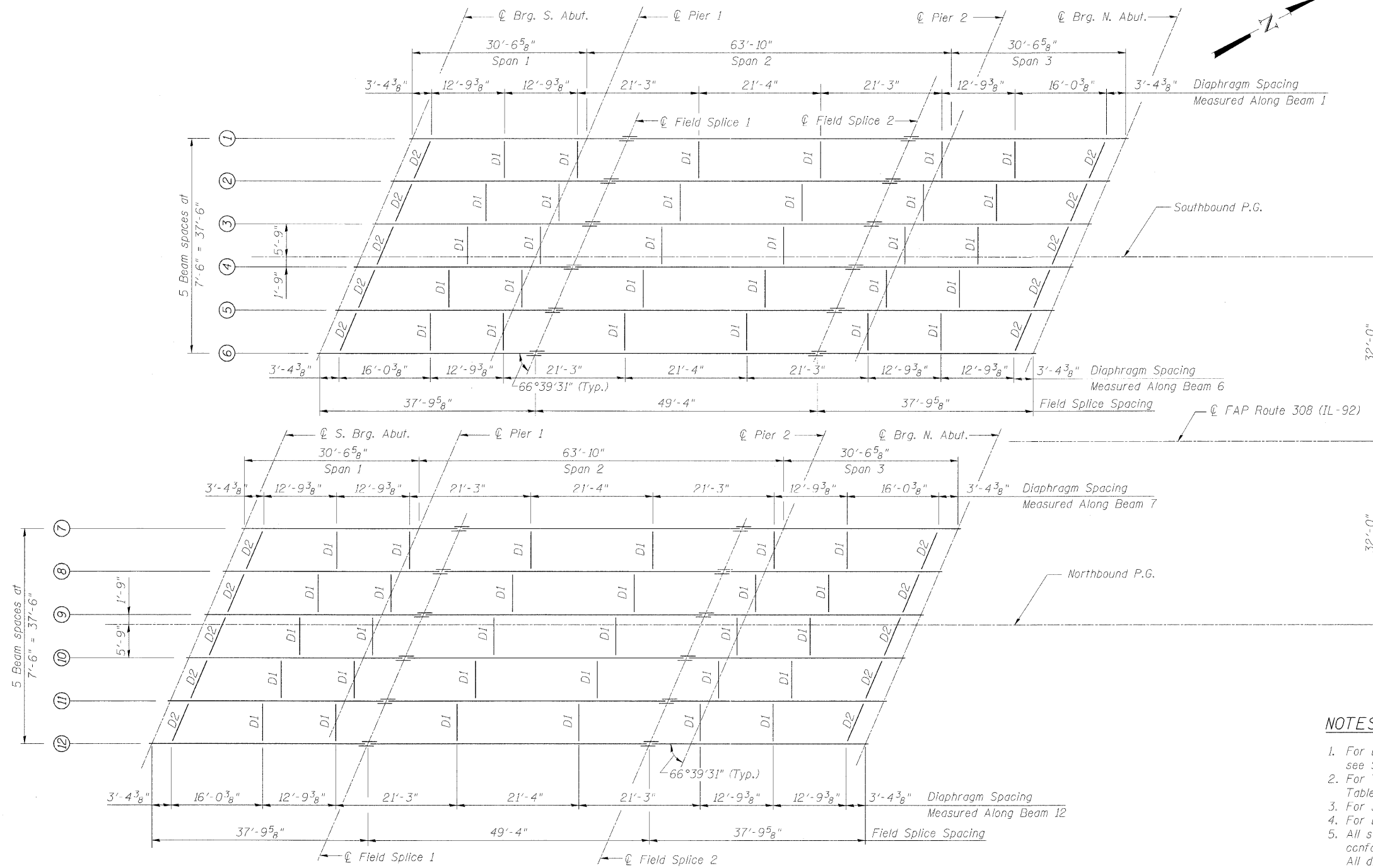


STATE OF ILLINOIS
DEPARTMENT OF TRANSPORTATION

ROUTE NO. F.A.P. 308	SECTION #	COUNTY ROCK ISLAND	STATE 210	SHEET 97	SHEET NO. 13 31 SHEETS
FED. ROAD DIST. NO. 7		ILLINOIS		FED. AID PROJECT	

Contract #64814 * (HB,HB-1,VB,HB-2)R



FRAMING PLAN

NOTES

1. For beam elevation and shear stud spacing see Sheet No. 14
2. For Top of Beam Elevations and Moment and Reaction Table see Sheet No. 15
3. For splice and diaphragm details see Sheet No. 14
4. For bearing details, see Sheet No. 15
5. All steel for the steel beams, including splice plates, shall conform to the requirements of AASHTO M270 Grade 50. All diaphragms, including connection angles and plates, shall conform to the requirements of AASHTO M270, Grade 36.

FRAMING PLAN
IL ROUTE 92 (CENTENNIAL EXPRESSWAY)
OVER 31st AVENUE
FAP ROUTE 308 SEC. 1(HB-2)R
ROCK ISLAND COUNTY
STATION 1470+70.31
STRUCTURE NO. 081-0172 (SB)
STRUCTURE NO. 081-0173 (NB)

DESIGNED	JSD
CHECKED	RH
DRAWN	EF
CHECKED	RH

LOCHNER
H.W. LOCHNER, INC., CHICAGO, ILLINOIS

t:\2082\struet\dgn\c2044023FP1.dgn