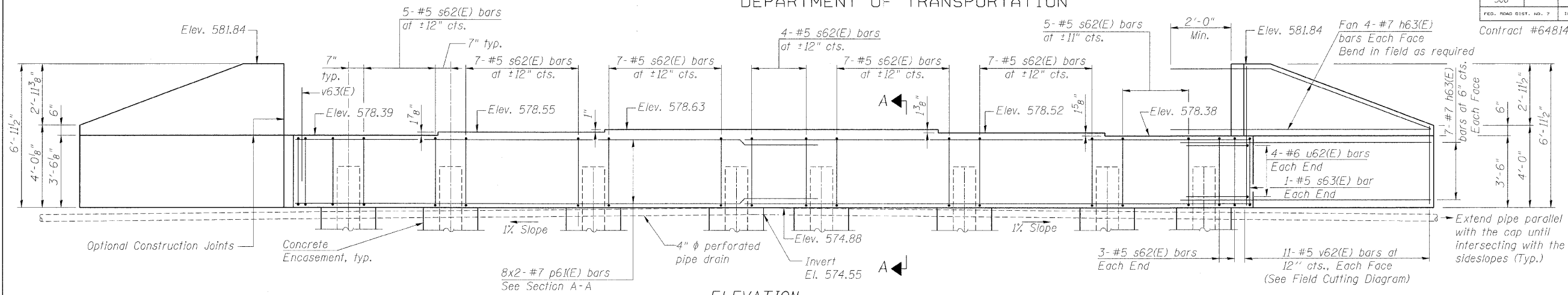


STATE OF ILLINOIS
DEPARTMENT OF TRANSPORTATION

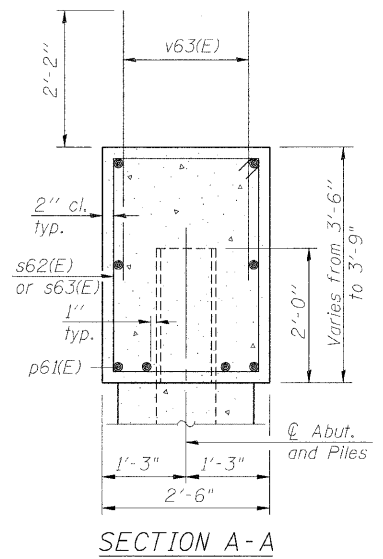
ROUTE NO. F.A.P. 308	SECTION *	COUNTY ROCK ISLAND	SHEET NO. 210	SHEET NO. 100	SHEET NO. 16 31 SHEETS
FED. ROAD DIST. NO. 7		ILLINOIS		FED. AID PROJECT	

Contract #64814 * (1HB,HB-1,VB,HB-2)R



ELEVATION

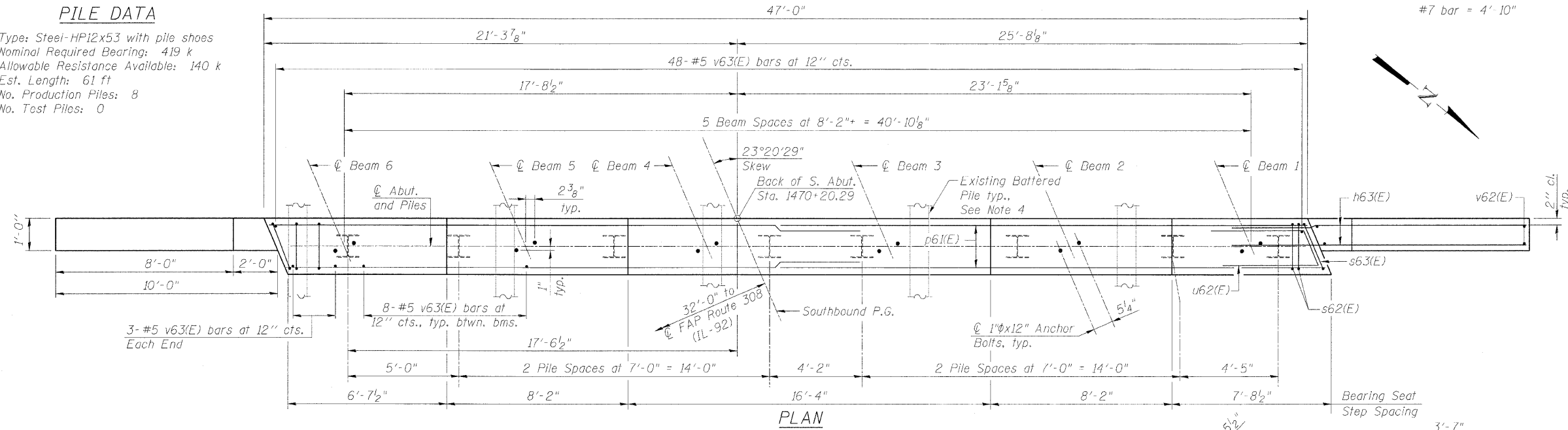
MIN. BAR LAP
#7 bar = 4'-10"



SECTION A-A

PILE DATA

Type: Steel-HP12x53 with pile shoes
Nominal Required Bearing: 419 k
Allowable Resistance Available: 140 k
Est. Length: 61 ft
No. Production Piles: 8
No. Test Piles: 0



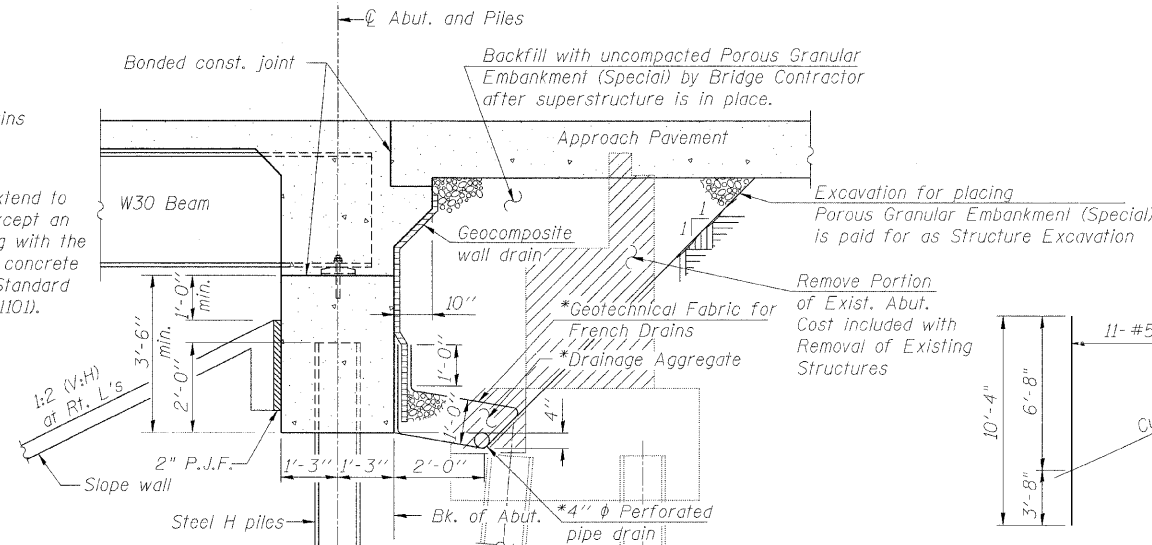
PLAN

BILL OF MATERIAL

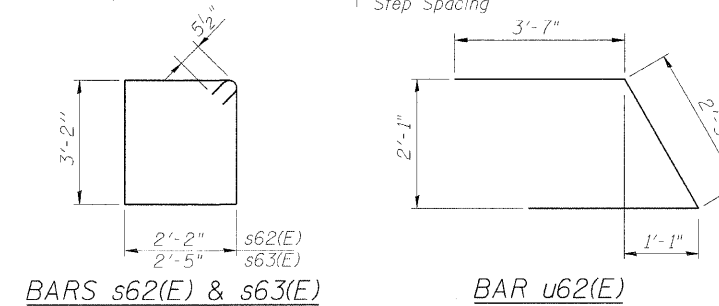
Bar No.	Size	Length	Shape
h63(E) 44	#7	11'-10"	
p61(E) 16	#7	25'-9"	
s62(E) 48	#5	11'-7"	
s63(E) 2	#5	12'-1"	
u62(E) 8	#6	9'-5"	
v62(E) 22	#5	10'-4"	
v63(E) 94	#5	4'-4"	
Porous Granular Embankment (Special)	Cu. Yd.	68	
Structure Excavation	Cu. Yd.	37	
Concrete Structures	Cu. Yd.	20.2	
Reinforcement Bars, Epoxy Coated	Pound	3,290	
Furnishing Steel Piles HP12x53	Foot	488	
Driving Piles	Foot	488	
Pile Shoes	Each	8	
Concrete Encasement	Cu. Yd.	2.8	
Geocomposite Wall Drain	Sq. Yd.	43	
Pipe Underdrains for Structures 4"	Foot	85	

* Included in the cost of Pipe Underdrains for Structures, 4"

Note:
All Drainage system components shall extend to 2'-0" from the end of each wingwall except an outlet pipe shall extend until intersecting with the side slopes. The pipes shall drain into concrete headwalls. (See Article 601.05 of the Standard Specifications and Highway Standard 601101).



SECTION THRU ABUTMENT
(Horiz. dim. @ Rt. L's)



BARS s62(E) & s63(E)

BAR u62(E)

NOTES

- For details of Bar Splicers, see Sheet No. 23
- For details of piles and Concrete Encasement, see Sheet No. 22
- Bars indicated thus 8x2-#7 etc. indicates 8 lines of bars with 2 lengths per line.
- The Contractor shall verify the locations of existing piles before driving new piles.
- Excavation required for Concrete Encasements shall be included in the cost of Concrete Encasement.
- Pour steps monolithically with cap.
- For shim plates and bearing details, see Sheet No. 15
- For abutment diaphragm details, see Sheet No. 10

FIELD CUTTING DIAGRAM

Order v62(E) full length. Cut as shown and use remainder of bars in opposite face.

DESIGNED	AMK
CHECKED	JSD
DRAWN	EF
CHECKED	RWC

LOCHNER
H.W. LOCHNER, INC., CHICAGO, ILLINOIS

SOUTH ABUTMENT (SB)
IL ROUTE 92 (CENTENNIAL EXPRESSWAY)
OVER 31st AVENUE
FAP ROUTE 308 SEC. 1(HB-2)R
ROCK ISLAND COUNTY
STATION 1470+70.31
STRUCTURE NO. 081-0172 (SB)
STRUCTURE NO. 081-0173 (NB)