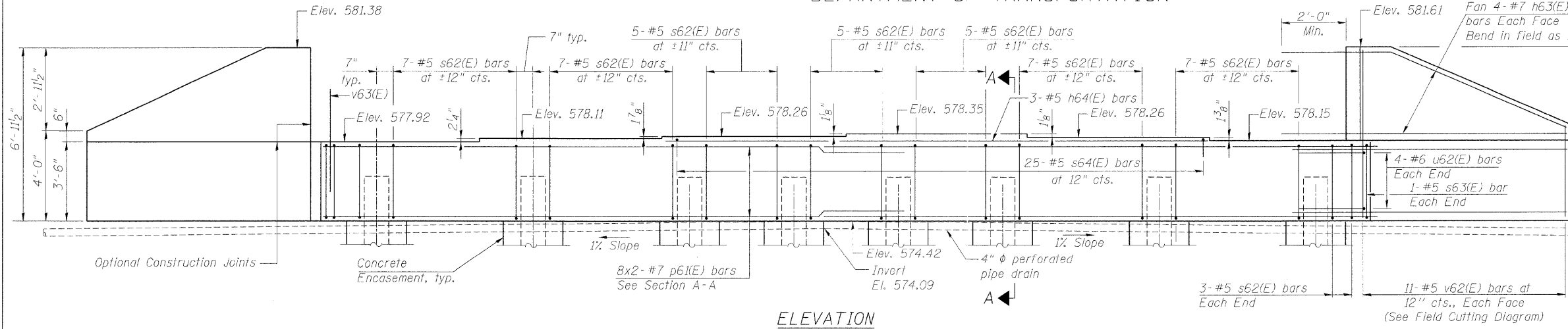


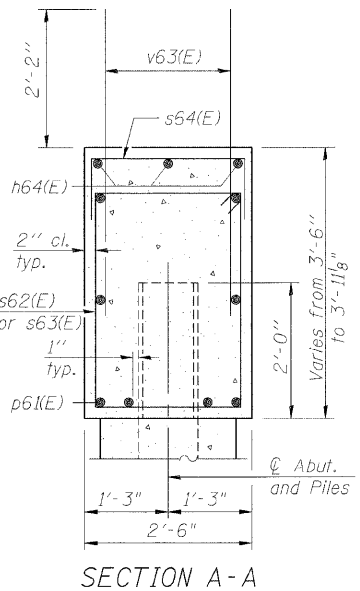
STATE OF ILLINOIS  
DEPARTMENT OF TRANSPORTATION

ROUTE NO. F.A.P. 308	SECTION *	COUNTY ROCK ISLAND	TOTAL SHEETS 210	SHEET NO. 101	SHEET NO. 17 31 SHEETS
FED. ROAD DIST. NO. 7		ILLINOIS	FED. AID PROJECT		

Contract #64814 \* I(HB,HB-1,VB,HB-2)R

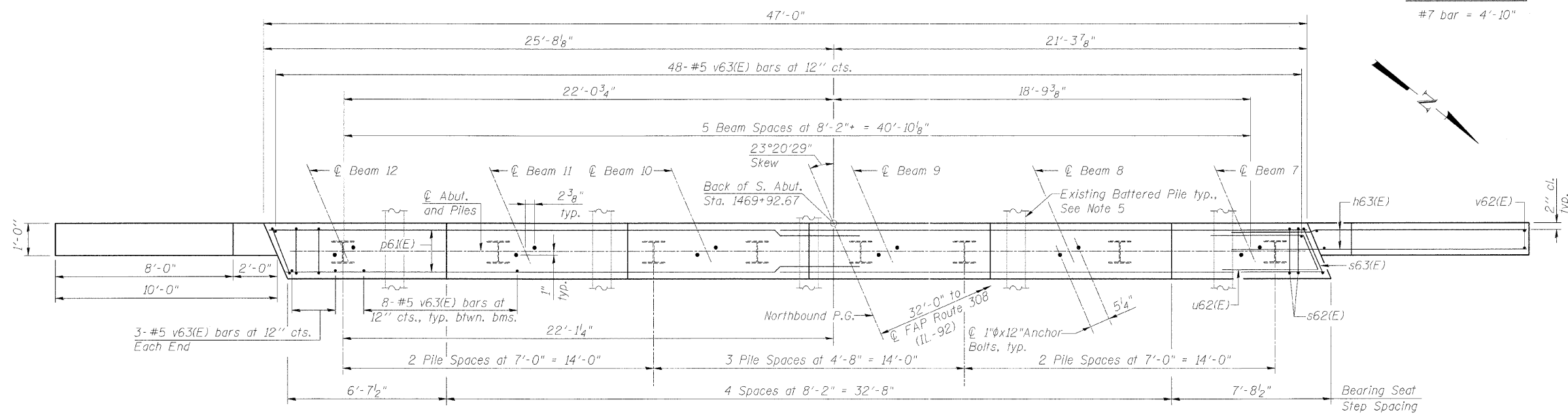


ELEVATION



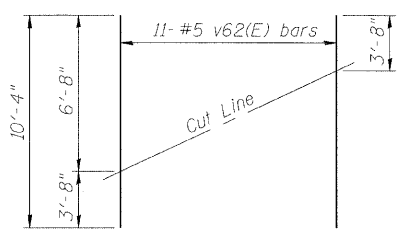
SECTION A-A

MIN. BAR LAP  
#7 bar = 4'-10"

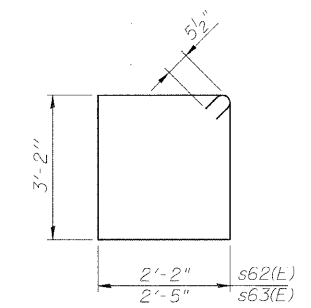


PLAN

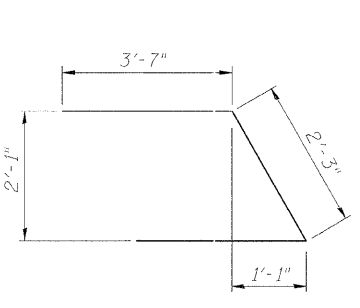
**PILE DATA**  
Type: Steel-HP12x53 with pile shoes  
Nominal Required Bearing: 419 k  
Allowable Resistance Available: 140 k  
Est. Length: 61 ft  
No. Production Piles: 8  
No. Test Piles: 0



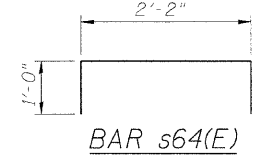
FIELD CUTTING DIAGRAM  
Order v62(E) full length. Cut as shown and use remainder of bars in opposite face.



BARS s62(E) & s63(E)



BAR u62(E)



BAR s64(E)

NOTES

1. For details of Bar Splicers, see Sheet No. 23
2. For details of piles and Concrete Encasement, see Sheet No. 22
3. For Section thru Abutment, see Sheet No. 16
4. Bars indicated thus 8x2-#7 etc. indicates 8 lines of bars with 2 lengths per line.
5. The Contractor shall verify the locations of existing piles before driving new piles.
6. Excavation required for Concrete Encasements shall be included in the cost of Concrete Encasement.
7. Pour steps monolithically with cap.
8. For shim plates and bearing details, see Sheet No. 15
9. For abutment diaphragm details, see Sheet No. 10

BILL OF MATERIAL

Bar No.	Size	Length	Shape
h63(E) 11	#7	11'-10"	—
h64(E) 3	#5	24'-2"	—
p61(E) 16	#7	25'-9"	—
s62(E) 49	#5	11'-7"	□
s63(E) 2	#5	12'-1"	□
s64(E) 25	#5	4'-2"	□
u62(E) 8	#6	9'-5"	△
v62(E) 22	#5	10'-4"	—
v63(E) 94	#5	4'-4"	—
Porous Granular Embankment (Special) Structure Excavation	Cu. Yd.	70	
Concrete Structures	Cu. Yd.	44	
Reinforcement Bars, Epoxy Coated	Pound	20.8	
Furnishing Steel Piles HP12x53	Foot	3,480	
Driving Piles	Foot	488	
Pile Shoes	Each	8	
Concrete Encasement	Cu. Yd.	488	
Geocomposite Wall	Sq. Yd.	8	
Pipe Underdrains for Structures 1"	Foot	42	

SOUTH ABUTMENT (NB)  
IL ROUTE 92 (CENTENNIAL EXPRESSWAY)  
OVER 31st AVENUE  
FAP ROUTE 308 SEC. 1(HB-2)R  
ROCK ISLAND COUNTY  
STATION 1470+70.31  
STRUCTURE NO. 081-0172 (SB)  
STRUCTURE NO. 081-0173 (NB)

DESIGNED	AMK
CHECKED	JSD
DRAWN	EF
CHECKED	RWC

**LOCHNER**  
H.W. LOCHNER, INC., CHICAGO, ILLINOIS

t:\2082\struc\c2044023\A2.dgn