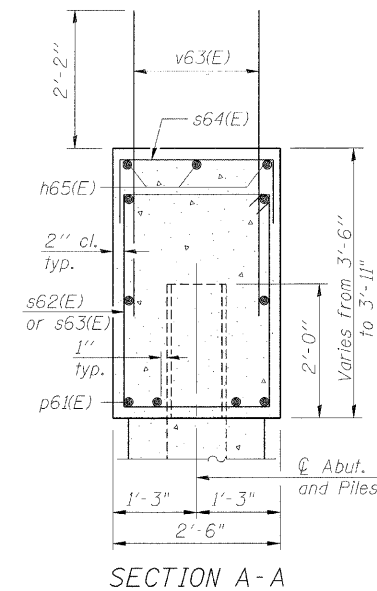
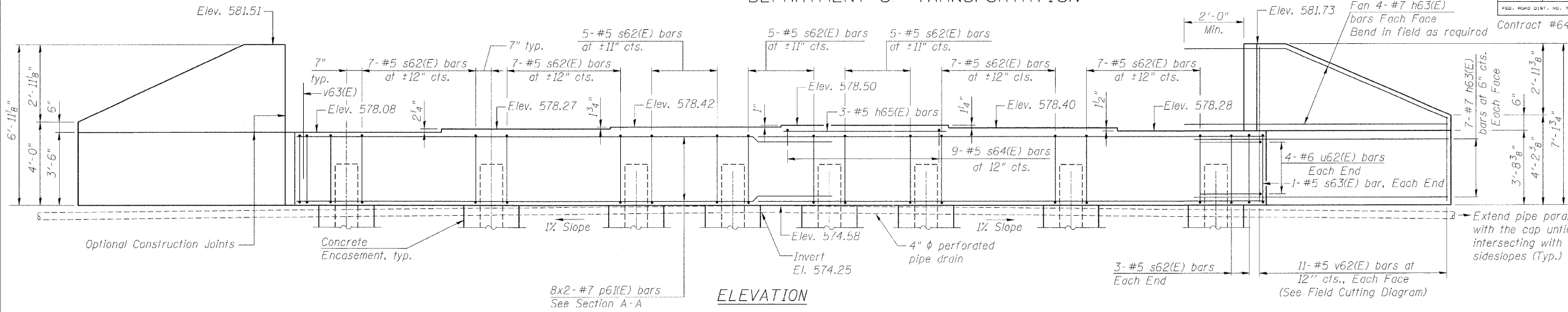
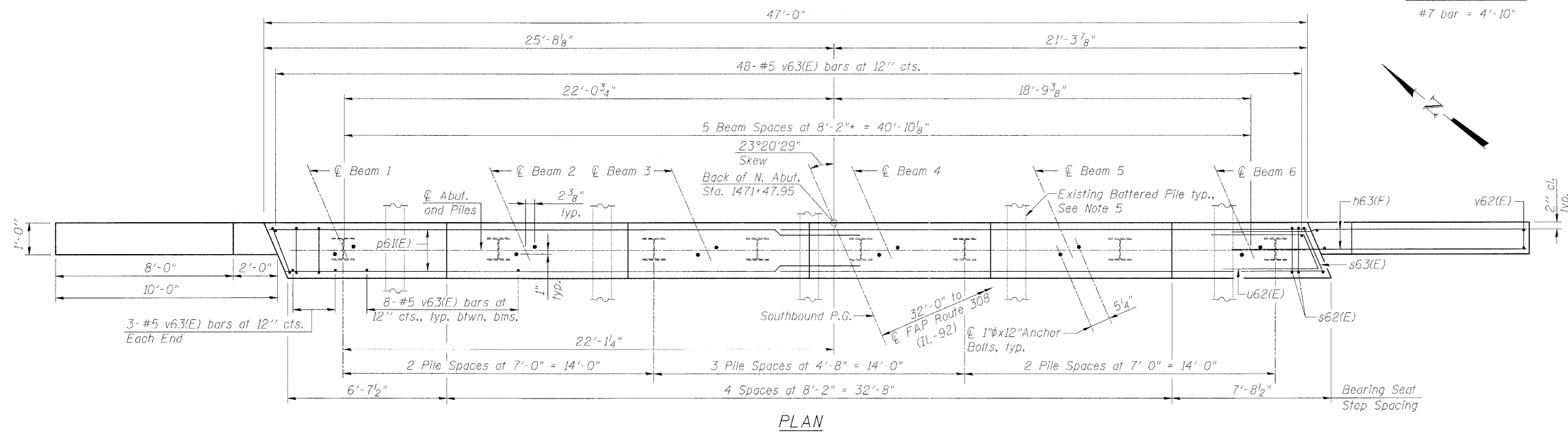


STATE OF ILLINOIS
DEPARTMENT OF TRANSPORTATION

ROUTE NO.	SECTION	COUNTY	TOTAL SHEETS	SHEET NO.	SHEET NO. 18
F.A.P. 308	*	ROCK ISLAND	210	102	31 SHEETS
FED. ROAD DIST. NO. 7	ILLINOIS	FED. AID PROJECT-	Contract #64814 * 1(HB,HB-1,VB,HB-2)R		



MIN. BAR LAP
#7 bar = 4'-10"

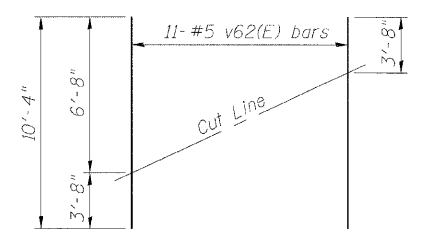


BILL OF MATERIAL

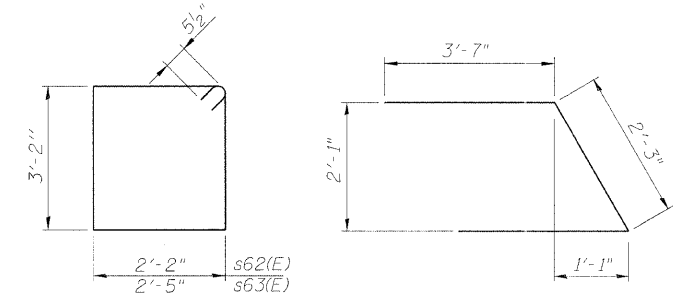
Bar	No.	Size	Length	Shape
h63(E)	44	#7	11'-10"	—
h65(E)	3	#5	7'-10"	—
p61(E)	16	#7	25'-9"	—
s62(E)	47	#5	11'-7"	□
s63(E)	2	#5	12'-1"	□
s64(E)	9	#5	4'-2"	□
u62(E)	8	#6	9'-5"	△
v62(E)	22	#5	10'-4"	—
v63(E)	94	#5	4'-4"	—
Porous Granular Embankment (Special)		Cu. Yd.	70	
Structure Excavation		Cu. Yd.	41	
Concrete Structures		Cu. Yd.	20.9	
Reinforcement Bars, Epoxy Coated		Pound	3,340	
Furnishing Steel Piles HP12x53		Foot	488	
Driving Piles		Foot	488	
Pile Shoes		Each	8	
Concrete Encasement		Cu. Yd.	2.8	
Geocomposite Wall Drain		Sq. Yd.	43	
Pipe Underdrains for Structures 1"		Foot	85	

PILE DATA

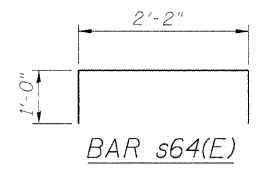
Type: Steel-HP12x53 with pile shoes
Nominal Required Bearing: 419 k
Allowable Resistance Available: 140 k
Est. Length: 61 ft
No. Production Piles: 8
No. Test Piles: 0



FIELD CUTTING DIAGRAM
Order v62(E) full length. Cut as shown and use remainder of bars in opposite face.



BARS s62(E) & s63(E) BAR u62(E)



BAR s64(E)

NOTES

- For details of Bar Splicers, see Sheet No. 23
- For details of piles and Concrete Encasement, see Sheet No. 22
- For Section thru Abutment, see sheet No. 16
- Bars indicated thus 8x2-#7 etc. indicates 8 lines of bars with 2 lengths per line.
- The Contractor shall verify the locations of existing piles before driving new pile.
- Excavation required for Concrete Encasements shall be included in the cost of Concrete Encasement.
- Pour steps monolithically with cap.
- For shim plates and bearing details, see Sheet No. 15
- For abutment diaphragm details, see Sheet No. 10

NORTH ABUTMENT (SB)
IL ROUTE 92 (CENTENNIAL EXPRESSWAY)
OVER 31st AVENUE
FAP ROUTE 308 SEC. 1(HB-2)R
ROCK ISLAND COUNTY
STATION 1470+70.31
STRUCTURE NO. 081-0172 (SB)
STRUCTURE NO. 081-0173 (NB)

DESIGNED	AMK
CHECKED	JSD
DRAWN	OS
CHECKED	RWC

LOCHNER
H.W. LOCHNER, INC., CHICAGO, ILLINOIS

t:\2082\structure\204023NA1.dgn