

**GENERAL NOTES**

- Fasteners shall be AASHTO M164 Type 1, mechanically galvanized bolts. Bolts  $\frac{3}{4}$  in. dia., holes  $\frac{15}{16}$  in. dia., unless otherwise noted.
- Calculated weight of Structural Steel M270 Grade 36 = 17,820 lbs.
- No field welding is permitted except as specified in the contract documents.
- The Contractor shall test the existing welds by non-destructive methods within 2 ft. of the end of the existing cover plates for cracks after removal of the existing concrete deck. Dye penetrant (PT), magnetic particle (MT), or other approved testing method shall be performed by qualified personnel approved by the Engineer. If cracks are found, report them to the Bureau of Bridges and Structures for disposition. The cost of testing is included in Removal of Existing Concrete Deck. The cost of crack repair, if necessary, will be paid for according to Article 109.04 of the Standard Specifications.
- Reinforcement bars shall conform to the requirements of ASTM A 706 Gr 60 (IL Modified). See Special Provisions.
- Reinforcement bars designated (E) shall be epoxy coated.
- Prior to pouring the new concrete deck, all heavy or loose rust, loose mill scale, and other loose or potentially detrimental foreign material shall be removed from the surfaces in contact with concrete. Tightly adhered paint may remain unless otherwise noted. Removal shall be accomplished by methods that will not damage the steel and the cost will be included in the pay item covering removal of the existing concrete.  
  
As directed by the Engineer, existing construction accessories welded to the top flange of beams and girders shall be removed. The weld areas shall be ground flush and inspected for cracks using magnetic particle testing (MT) or dye penetrant testing (PT) by an individual acceptable to the Engineer. Any cracks that cannot be removed by grinding  $\frac{1}{4}$  inch deep shall be identified and reported to the Bureau of Bridges and Structures for further disposition. The cost of removing welded accessories, grinding and inspecting weld areas and grinding cracks will be paid for according to Article 109.04 of the Standard Specifications.
- If the Contractor elects to use cantilever forming brackets on the exterior beams or girders, the brackets shall be placed at the same locations as required for the hardwood blocks in Article 503.06(b) of the Standard Specifications. If additional cantilever forming brackets are required, hardwood blocking shall be wedged between the exterior and first interior beam at each of these additional bracket locations.
- Plan dimensions and details relative to existing plans are subject to routine variations. The Contractor shall field verify existing dimensions and details affecting new construction and make necessary approved adjustments prior to construction or ordering of materials. Such variations shall not be cause for additional compensation for a change in scope of the work, however, the Contractor will be paid for the quantity actually furnished based upon the unit price bid for the work.
- Concrete Sealer shall be applied to the designated areas of the Abutments.
- The existing structural steel coating contains lead. The Contractor shall take appropriate precautions to deal with the presence of lead on this project.
- Existing contact surface areas at the locations of the diaphragm removal and replacements shall be cleaned and painted as required by the Special Provision "Cleaning and Painting Contact Surface Areas of Existing Steel Structures."
- The Organic Zinc Rich Primer / Epoxy / Urethane Paint System shall be used for painting of new structural steel except where otherwise noted. The entire system shall be shop applied, with the exception that masked off connection surfaces, field installed fasteners and damaged areas shall be touched up in the field. The color of the final finish coat for all interior steel surfaces shall be Gray, Munsell No. 5B 7/1. See Special Provision for "Cleaning and Painting New Metal Structures".
- Cleaning and painting of the existing structural steel shall be as specified in the Special Provision for "Cleaning and Painting Existing Steel Structures". All beams, bearings and other structural steel in the two end spans of the bridge shall be cleaned per Near White Blast Cleaning - SSPC-SP10. All remaining structural steel (in the center span of the bridge) shall be cleaned per Power Tool Cleaning - Modified SSPC-SP3. The designated areas cleaned per Near White Blast Cleaning - SSPC-SP10 shall be painted according to the requirements of Paint System 1 - OZ/E/U. The designated areas cleaned per Power Tool Cleaning - Modified SSPC-SP3 shall be painted according to the requirements of Paint System 2 - PS/EM/U. The color of the final finish coat for all interior steel surfaces shall be Gray, Munsell No. 5B 7/1. The color of the final finish coat for the exterior and bottom flange of the fascia beams shall be Blue, Munsell No. 10B 3/6.
- A minimum of two (2) air monitors will be required to monitor abrasive blasting operations at this site, see Special Provision for "Containment and Disposal of Lead Paint Cleaning Residues".
- Slip forming of the parapets and median barrier is not allowed.

STATE OF ILLINOIS  
DEPARTMENT OF TRANSPORTATION

ROUTE NO.	SECTION	COUNTY	TOTAL SHEETS	SHEET NO.
F.A.P. 308	*	ROCK ISLAND	210	117
SHEET NO. 2 32 SHEETS				
FED. ROAD DIST. NO. 7	ILLINOIS	ILL. AID PROJECT		
Contract #64814 * (IHB,HB-1,VB,HB-2)R				

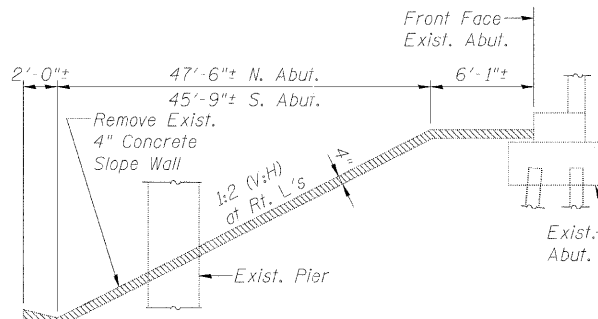
**TOTAL BILL OF MATERIAL**

Item	Unit	Super	Sub		Total
			Piers	Abut.	
Porous Granular Embankment, Special	Cu. Yd.			348	348
Concrete Removal	Cu. Yd.			62.0	62.0
Slope Wall Removal	Sq. Yd.			1,825	1,825
Removal of Existing Concrete Deck	Each	1			1
Protective Shield	Sq. Yd.	797			797
Structure Excavation	Cu. Yd.			348	348
Floor Drains	Each	2			2
Concrete Structures	Cu. Yd.			69.7	69.7
Concrete Superstructure	Cu. Yd.	648.7			648.7
Bridge Deck Grooving	Sq. Yd.	1,783			1,783
Protective Coat	Sq. Yd.	2,267			2,267
Structural Repair of Concrete (Depth Equal To or Less Than 5")	Sq. Ft.		474		474
Structural Repair of Concrete (Depth Greater Than 5")	Sq. Ft.		50		50
Furnishing and Erecting Structural Steel	Pound	17,820			17,820
Stud Shear Connectors	Each	7,872			7,872
Jack and Remove Existing Bearings	Each			28	28
Structural Steel Removal	Pound	13,820			13,820
Cleaning and Painting Steel Bridge	L. Sum	1			1
Containment and Disposal of Lead Paint Cleaning Residues	L. Sum	1			1
Reinforcement Bars, Epoxy Coated	Pound	145,780		14,290	160,070
Bar Splicers	Each	715		298	1,013
Slope Wall 4"	Sq. Yd.			132	132
Bituminous Coated Aggregate Slope Wall 6"	Sq. Yd.			3,474	3,474
Temporary Sheet Piling	Sq. Ft.			147	147
Name Plates	Each	1			1
Preformed Joint Strip Seal	Foot	255			255
Elastomeric Bearing Assembly, Type I	Each			14	14
Elastomeric Bearing Assembly, Type II	Each			14	14
Anchor Bolts, 1"	Each			56	56
Concrete Sealer	Sq. Ft.			1,453	1,453
Geocomposite Wall Drain	Sq. Yd.			211	211
Pipe Underdrains for Structures 4"	Foot			1,018**	1,018
Drainage Scuppers, DS-II	Each	6			6
Ornamental Railing	Foot	441			441
Drainage System	L. Sum	0.4			0.4

\*\*Quantity includes lengths for Slope Wall Drains

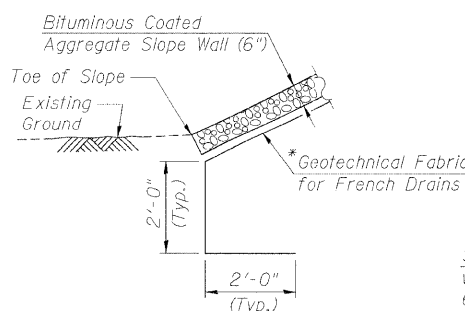
**INDEX OF SHEETS**

SHEET NO.	TITLE
1	GENERAL PLAN AND ELEVATION
2	GENERAL NOTES, BILL OF MATERIAL AND INDEX OF SHEETS
3	STAGING DETAILS
4	TOP OF SLAB ELEVATIONS 1
5	TOP OF SLAB ELEVATIONS 2
6	TOP OF SLAB ELEVATIONS 3
7	TOP OF SLAB ELEVATIONS 4
8	TOP OF SOUTH APPROACH SLAB ELEVATIONS
9	TOP OF NORTH APPROACH SLAB ELEVATIONS
10	DECK PLAN
11	PARAPET DETAILS
12	APPROACH PARAPET DETAILS
13	MEDIAN BARRIER DETAILS
14	DECK DETAILS
15	ORNAMENTAL RAILING DETAILS
16	EXPANSION JOINT DETAILS
17	DRAINAGE SCUPPER, DS-II
18	CLOSED DRAINAGE SYSTEM
19	FRAMING PLAN
20	STEEL DETAILS
21	BEARING DETAILS 1
22	BEARING DETAILS 2
23	ABUTMENT CONCRETE REMOVAL PLAN
24	SOUTH ABUTMENT
25	NORTH ABUTMENT
26	ABUTMENT DETAILS
27	PIER 1 REPAIRS
28	PIER 2 REPAIRS
29	BAR SPLICER ASSEMBLY DETAILS
30	TEMPORARY CONCRETE BARRIER FOR STAGE CONSTRUCTION
31	SOIL BORINGS 1
32	SOIL BORINGS 2

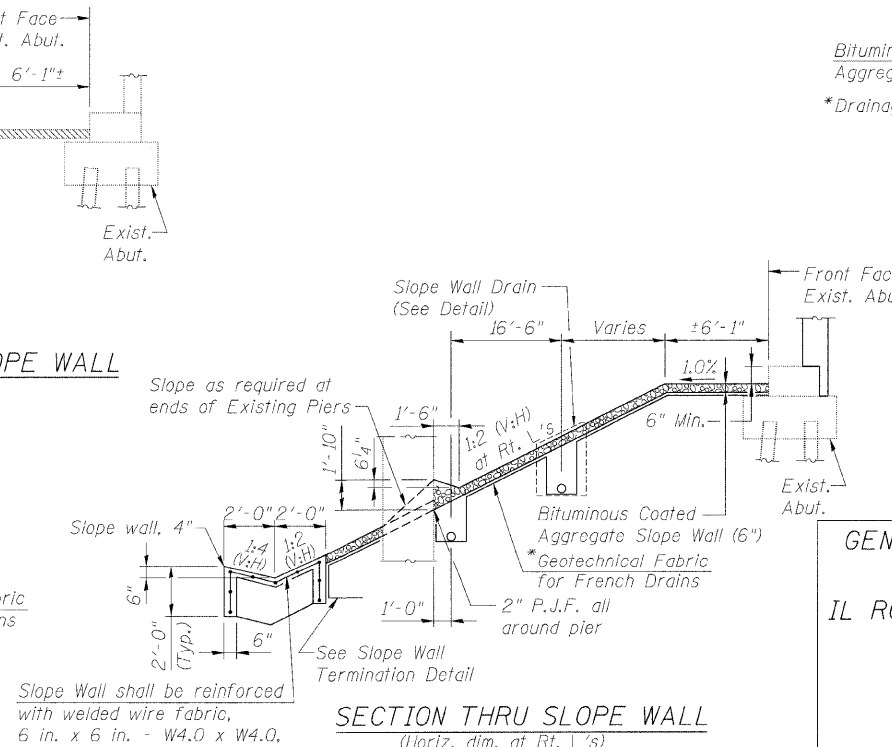


**SECTION THRU EXIST. SLOPE WALL**

(Horiz. dim. at Rt. L's)

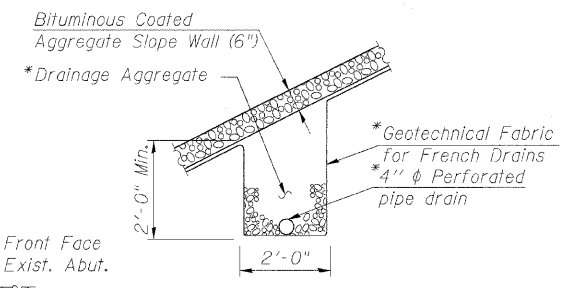


**SLOPE WALL TERMINATION DETAIL**



**SECTION THRU SLOPE WALL**

(Horiz. dim. at Rt. L's)



**SLOPE WALL DRAIN DETAIL**

\* Included in the cost of Pipe Underdrains for Structures, 4"

GENERAL NOTES, BILL OF MATERIALS  
AND INDEX OF SHEETS  
IL ROUTE 92 (CENTENNIAL EXPRESSWAY)  
OVER IAS RAILROAD  
FAP ROUTE 308 SEC. 1(VB)R  
ROCK ISLAND COUNTY  
STATION 1507+04.10  
STRUCTURE NO. 081-0064

DESIGNED	AMK
CHECKED	CMM
DRAWN	OS
CHECKED	RWC

**LOCHNER**  
H.W. LOCHNER, INC., CHICAGO, ILLINOIS

t:\2082\structure\044029\01.dgn