

STATE OF ILLINOIS
DEPARTMENT OF TRANSPORTATION

ROUTE NO.	SECTION	COUNTY	TOTAL SHEETS	SHEET NO.
F.A.P. 308	#	ROCK ISLAND	210	123
SHEET NO. 8 32 SHEETS				
FED. ROAD DIST. NO. 7	ILLINOIS	FED. AID PROJECT		
Contract #64814 * (HB,HB-1,VB,HB-2)R				

WEST CURB LINE

Location	Station	Offset	Theoretical Grade Elevations
End S. Appr. Pav't.	1506+18.97	-45.42	590.70
A	1506+29.39	-45.44	590.87
B	1506+39.78	-45.42	591.03
Back of Exist. South Abut.	1506+49.65	-45.00	591.18

WEST EDGE OF PAVEMENT

Location	Station	Offset	Theoretical Grade Elevations
End S. Appr. Pav't.	1506+11.03	-39.00	590.69
A	1506+21.37	-39.00	590.87
B	1506+31.72	-39.00	591.04
Back of Exist. South Abut.	1506+42.06	-39.00	591.19

STAGE CONST. LINE

Location	Station	Offset	Theoretical Grade Elevations
End S. Appr. Pav't.	1505+68.82	-4.00	590.52
A	1505+78.85	-4.00	590.75
B	1505+88.89	-4.00	590.96
Back of Exist. South Abut.	1505+98.92	-4.00	591.16

PROFILE GRADE LINE

Location	Station	Offset	Theoretical Grade Elevations
End S. Appr. Pav't.	1505+67.64	-3.00	590.52
A	1505+77.67	-3.00	590.74
B	1505+87.69	-3.00	590.96
Back of Exist. South Abut.	1505+97.72	-3.00	591.16

☉ FAP ROUTE 308 (IL-92)

Location	Station	Offset	Theoretical Grade Elevations
End S. Appr. Pav't.	1505+64.11	0.00	590.49
A	1505+74.11	0.00	590.72
B	1505+84.11	0.00	590.94
Back of Exist. South Abut.	1505+94.11	0.00	591.15

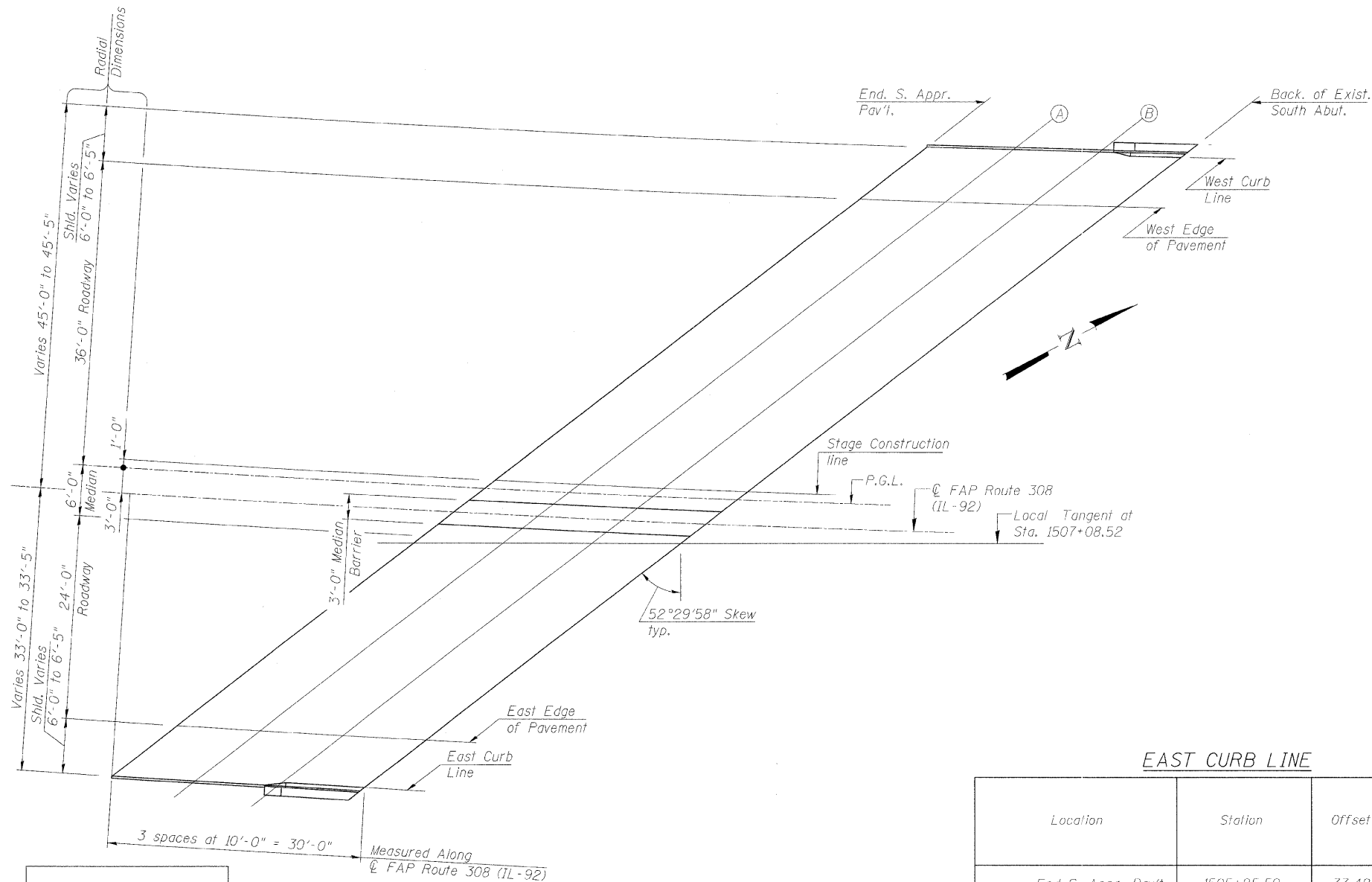
EAST EDGE OF PAVEMENT

Location	Station	Offset	Theoretical Grade Elevations
End S. Appr. Pav't.	1505+32.87	27.00	590.24
A	1505+42.65	27.00	590.50
B	1505+52.43	27.00	590.75
Back of Exist. South Abut.	1505+62.21	27.00	590.99

EAST CURB LINE

Location	Station	Offset	Theoretical Grade Elevations
End S. Appr. Pav't.	1505+25.59	33.42	590.17
A	1505+35.36	33.38	590.43
B	1505+45.46	33.06	590.69
Back of Exist. South Abut.	1505+55.26	33.00	590.94

TOP OF SOUTH APPROACH
SLAB ELEVATIONS
IL ROUTE 92 (CENTENNIAL EXPRESSWAY)
OVER IAIS RAILROAD
FAP ROUTE 308 SEC. 1(VB)R
ROCK ISLAND COUNTY
STATION 1507+04.10
STRUCTURE NO. 081-0064



PLAN

DESIGNED	AMK
CHECKED	CMM
DRAWN	AMK
CHECKED	RWC

LOCHNER
H.W. LOCHNER, INC., CHICAGO, ILLINOIS

t:\2082\st-ue\c\gn\2044029EL5.dgn