

STATE OF ILLINOIS
DEPARTMENT OF TRANSPORTATION

ROUTE NO. F.A.P. 308	SECTION *	COUNTY ROCK ISLAND	TOTAL SHEETS 210	SHEET 124	SHEET NO. 9 32 SHEETS
FED. ROAD DIST. NO. 7		ILLINOIS	FED. AID PROJECT Contract #64814 * I(HB,HB-1,VB,HB-2)R		

WEST CURB LINE

Location	Station	Offset	Theoretical Grade Elevations
Back of Exist. North Abut.	1508+88.82	-45.00	591.07
C	1508+99.48	-45.10	590.91
D	1509+10.49	-45.43	590.72
End N. Appr. Pav't.	1509+20.99	-45.42	590.54

STAGE CONST. LINE

Location	Station	Offset	Theoretical Grade Elevations
Back of Exist. North Abut.	1508+28.63	-4.00	592.55
C	1508+38.67	-4.00	592.47
D	1508+48.71	-4.00	592.38
End N. Appr. Pav't.	1508+58.76	-4.00	592.27

PROFILE GRADE LINE

Location	Station	Offset	Theoretical Grade Elevations
Back of Exist. North Abut.	1508+27.20	-3.00	592.58
C	1508+37.23	-3.00	592.50
D	1508+47.27	-3.00	592.41
End N. Appr. Pav't.	1508+57.30	-3.00	592.31

WEST EDGE OF PAVEMENT

Location	Station	Offset	Theoretical Grade Elevations
Back of Exist. North Abut.	1508+79.78	-39.00	591.32
C	1508+90.22	-39.00	591.17
D	1509+00.66	-39.00	591.01
End N. Appr. Pav't.	1509+11.10	-39.00	590.84

☉ FAP ROUTE 308 (IL-92)

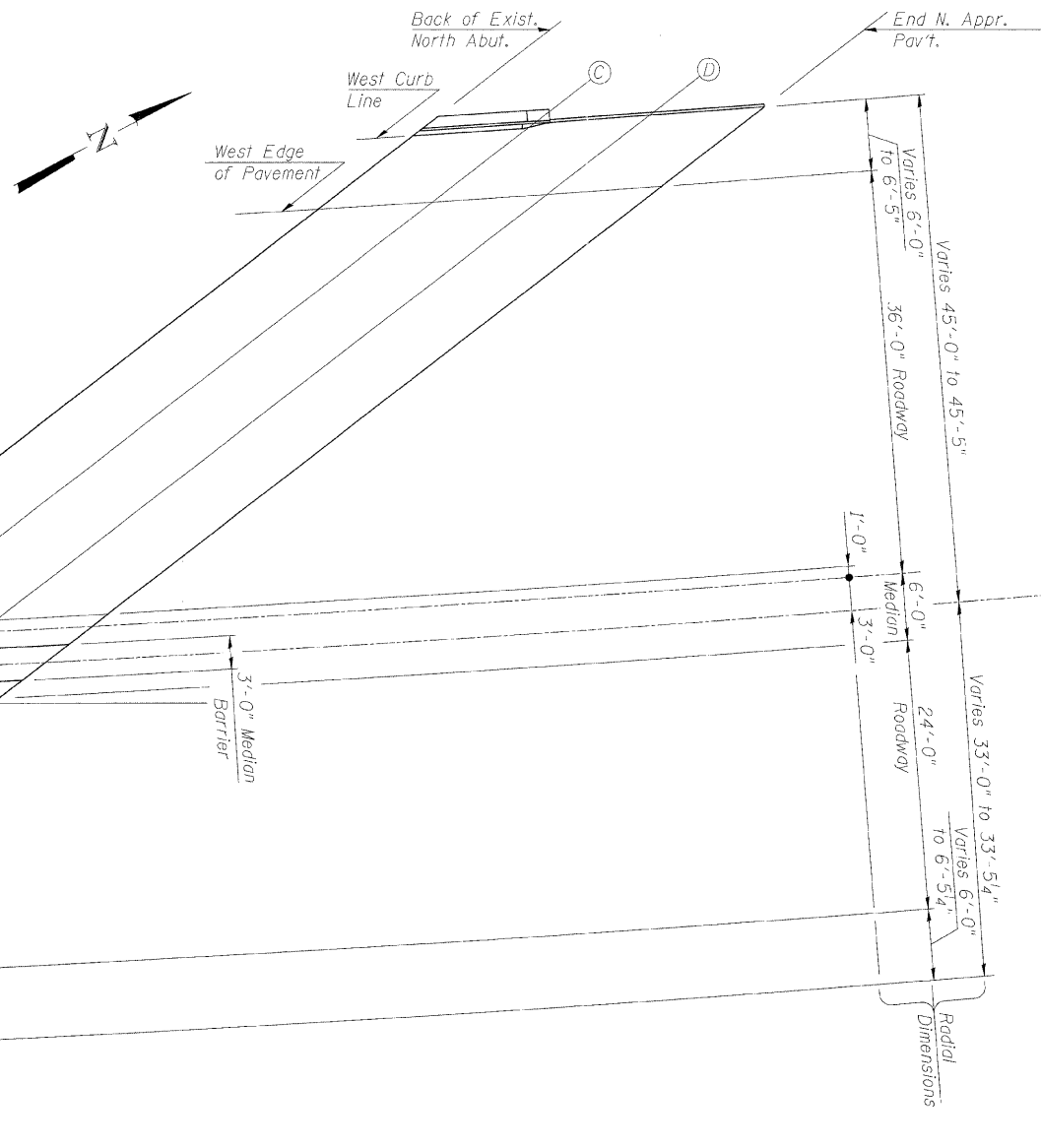
Location	Station	Offset	Theoretical Grade Elevations
Back of Exist. North Abut.	1508+22.94	0.00	592.67
C	1508+32.94	0.00	592.60
D	1508+42.94	0.00	592.51
End N. Appr. Pav't.	1508+52.94	0.00	592.42

EAST EDGE OF PAVEMENT

Location	Station	Offset	Theoretical Grade Elevations
Back of Exist. North Abut.	1507+85.38	27.00	593.38
C	1507+95.11	27.00	593.35
D	1508+04.83	27.00	593.31
End N. Appr. Pav't.	1508+14.55	27.00	593.26

EAST CURB LINE

Location	Station	Offset	Theoretical Grade Elevations
Back of Exist. North Abut.	1507+77.23	33.00	593.52
C	1507+86.33	33.41	593.51
D	1507+96.00	33.41	593.48
End N. Appr. Pav't.	1508+05.61	33.43	593.44



PLAN

DESIGNED	AMK
CHECKED	CMM
DRAWN	AMK
CHECKED	RWC

LOCHNER
H.W. LOCHNER, INC., CHICAGO, ILLINOIS

TOP OF NORTH APPROACH
SLAB ELEVATIONS
IL ROUTE 92 (CENTENNIAL EXPRESSWAY)
OVER IAIS RAILROAD
FAP ROUTE 308 SEC. I(VB)R
ROCK ISLAND COUNTY
STATION 1507+04.10
STRUCTURE NO. 081-0064

t:\2082\struet\sgn\2044029\EL6.dgn