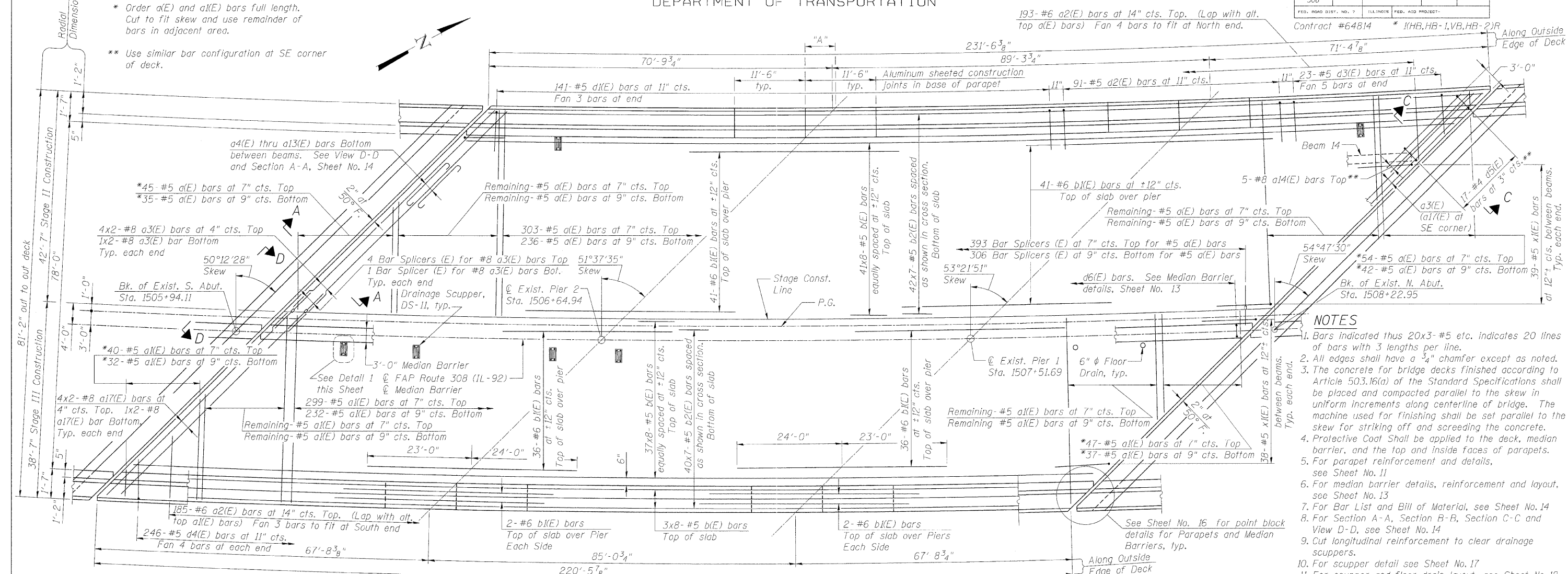


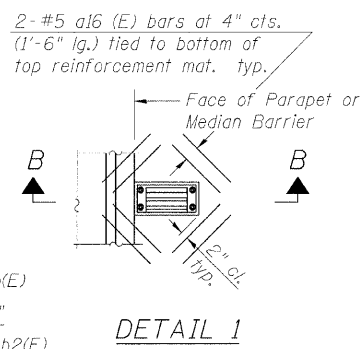
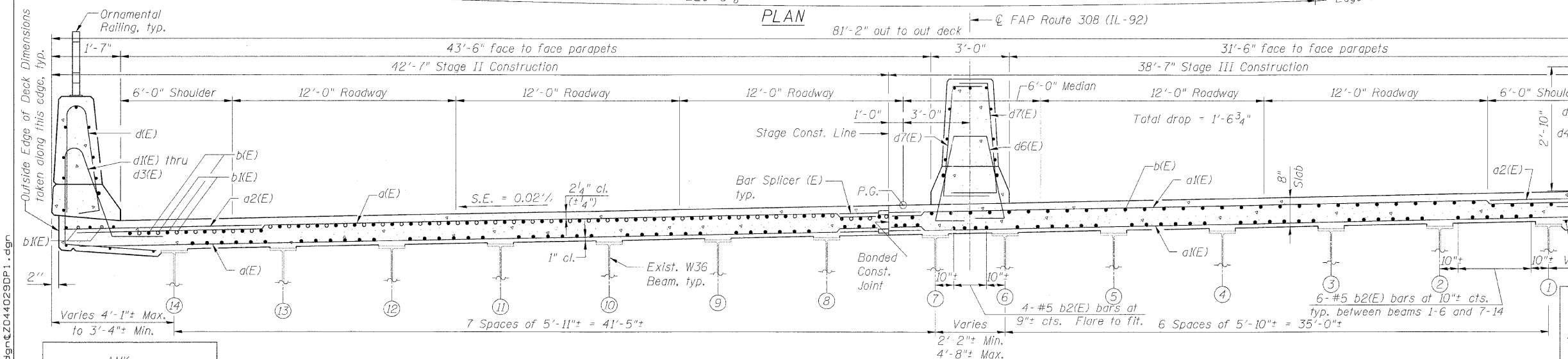
STATE OF ILLINOIS
DEPARTMENT OF TRANSPORTATION

ROUTE NO.	SECTION	COUNTY	STATION	SHEET	SHEET NO. 10
F.A.P. 308	*	ROCK ISLAND	210	125	32 SHEETS
FED. ROAD DIST. NO. 7	ILLINOIS	FED. AID PROJECT-			



- NOTES**
1. Bars indicated thus 20x3-#5 etc. indicates 20 lines of bars with 3 lengths per line.
 2. All edges shall have a 3/4" chamfer except as noted.
 3. The concrete for bridge decks finished according to Article 503.16(a) of the Standard Specifications shall be placed and compacted parallel to the skew in uniform increments along centerline of bridge. The machine used for finishing shall be set parallel to the skew for striking off and screeding the concrete.
 4. Protective Coat shall be applied to the deck, median barrier, and the top and inside faces of parapets.
 5. For parapet reinforcement and details, see Sheet No. 11
 6. For median barrier details, reinforcement and layout, see Sheet No. 13
 7. For Bar List and Bill of Material, see Sheet No. 14
 8. For Section A-A, Section B-B, Section C-C and View D-D, see Sheet No. 14
 9. Cut longitudinal reinforcement to clear drainage scuppers.
 10. For scupper detail see Sheet No. 17
 11. For scupper and floor drain layout, see Sheet No. 18
 12. For Bar Splicer details, see Sheet No. 29

PLAN



CROSS SECTION
(Looking North)

Note: Horizontal dimensions shown are radial

"A" Dimension

West Parapet, Pier 2	2'-1"
West Parapet, Pier 1	2'-2 3/4"
East Parapet, Pier 2	1'-11 1/4"
East Parapet, Pier 1	2'-0 3/4"

MINIMUM BAR LAP

#5 Bars = 2'-2"
#8 Bars = 6'-4"

DESIGNED	AMK
CHECKED	CMM
DRAWN	AMK
CHECKED	RWC

LOCHNER
H.W. LOCHNER, INC., CHICAGO, ILLINOIS

DECK PLAN
IL ROUTE 92 (CENTENNIAL EXPRESSWAY)
OVER IAIS RAILROAD
FAP ROUTE 308 SEC. 1(VB)R
ROCK ISLAND COUNTY
STATION 1507+04.10
STRUCTURE NO. 081-0064