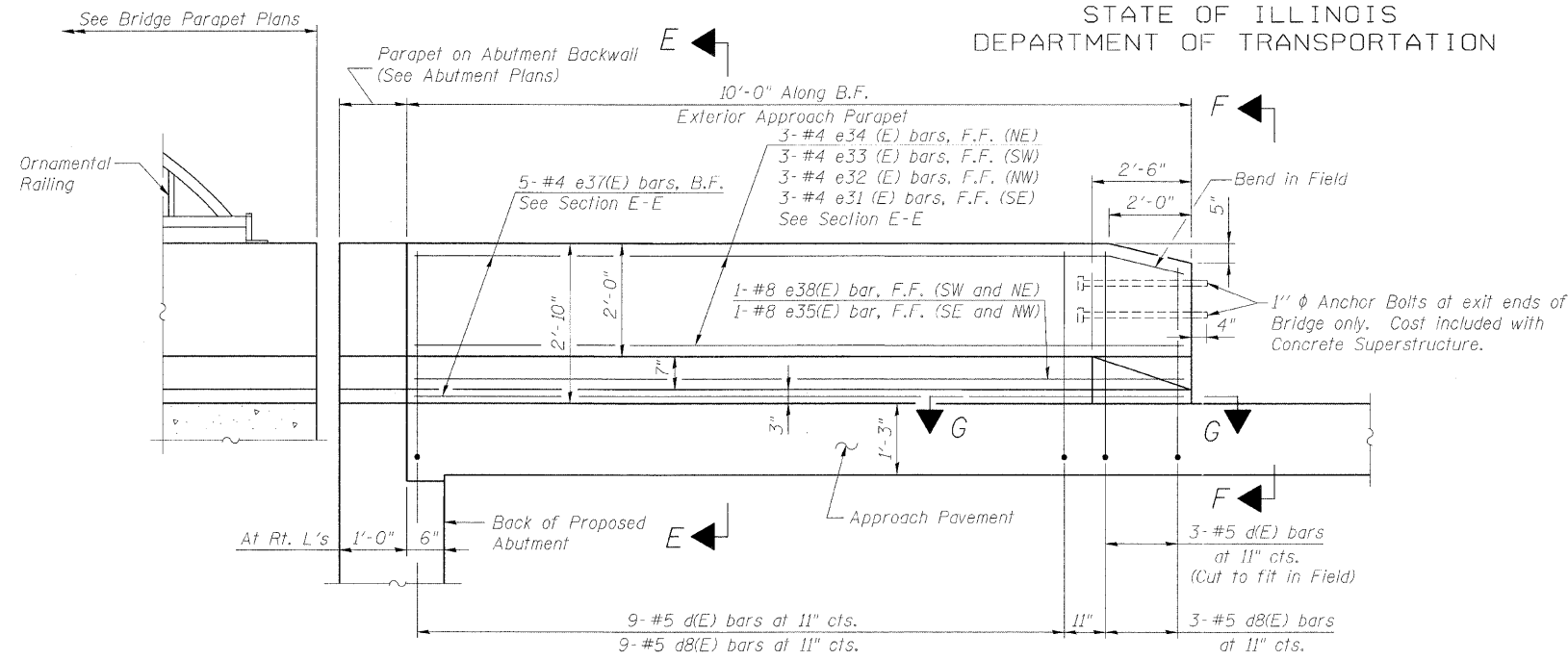


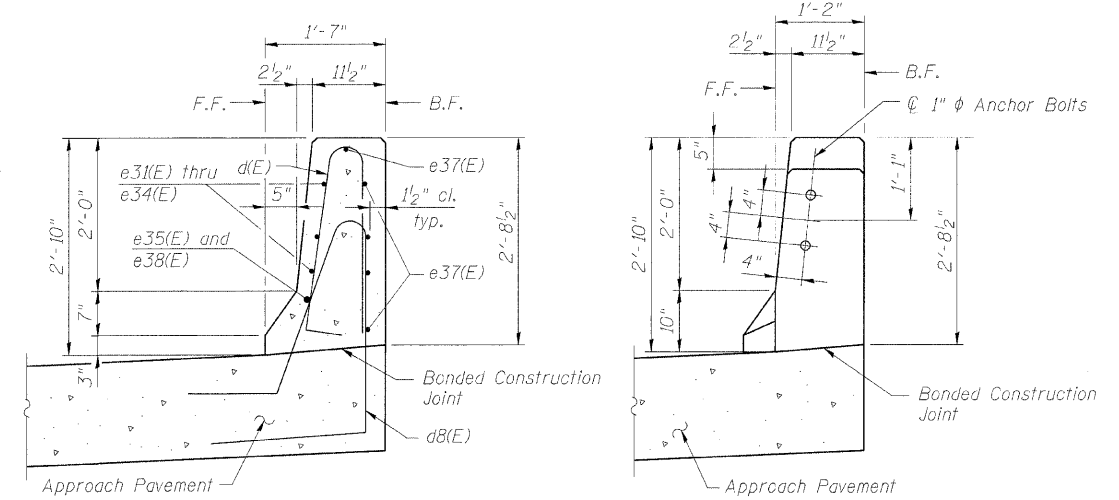
STATE OF ILLINOIS
DEPARTMENT OF TRANSPORTATION

| | | | | |
|-----------------------|----------|-------------------|-----------|-----------|
| ROUTE NO. | SECTION | COUNTY | SHEET NO. | SHEET NO. |
| F.A.P. 308 | # | ROCK ISLAND | 210 | 127 |
| FED. ROAD DIST. NO. 7 | ILLINOIS | FED. AID PROJECT- | | |

Contract #64814 * (HB,HB-1,VB,HB-2)R

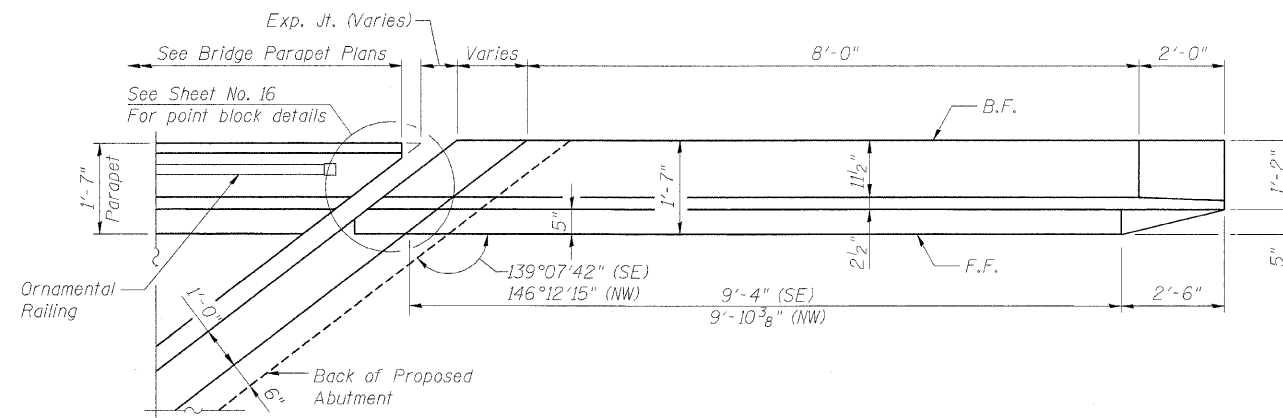


INSIDE ELEVATION - EXTERIOR APPROACH PARAPET

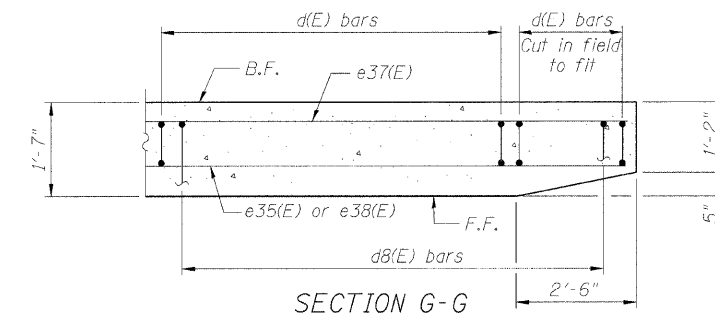


SECTION E-E

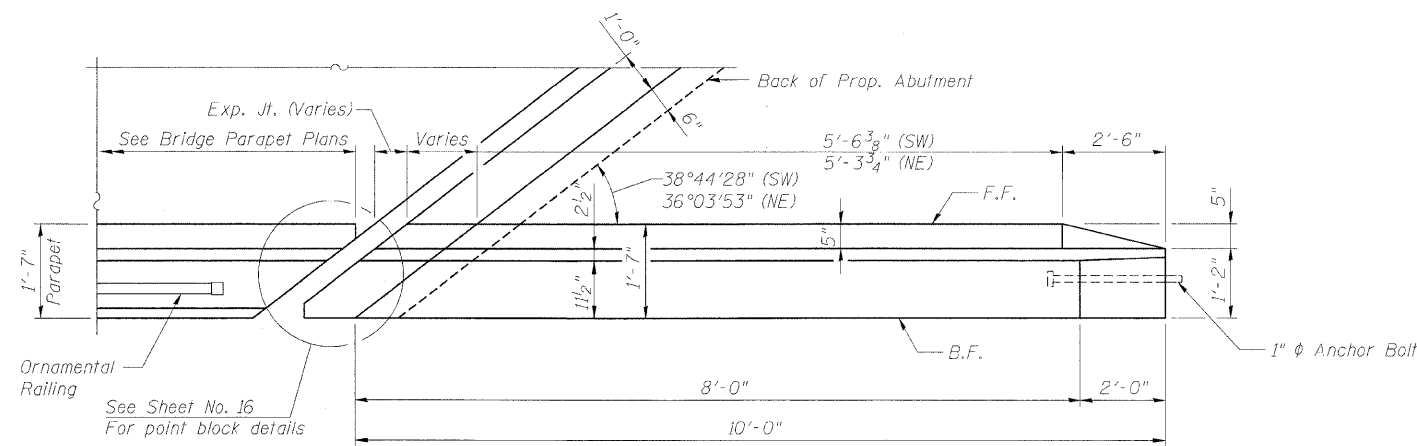
VIEW F-F



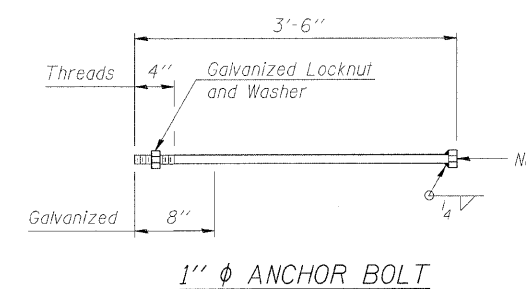
PLAN - EXTERIOR APPROACH PARAPET (SE AND NW)



SECTION G-G



PLAN - EXTERIOR APPROACH PARAPET (SW AND NE)



1" φ ANCHOR BOLT

NOTES

1. For Bar List and Bill of Material see Sheet No. 14
2. B.F. denotes Back Face
E.F. denotes Each Face
F.F. denotes Front Face
3. For Traffic Barrier Terminal details see IDOT Standard Drawings.
4. For Approach Pavement reinforcement and details see IDOT Standard Drawings.

APPROACH PARAPET DETAILS
IL ROUTE 92 (CENTENNIAL EXPRESSWAY)
OVER IAIS RAILROAD
FAP ROUTE 308 SEC. 1(VB)R
ROCK ISLAND COUNTY
STATION 1507+04.10
STRUCTURE NO. 081-0064

| | |
|----------|-----|
| DESIGNED | AMK |
| CHECKED | CMM |
| DRAWN | AMK |
| CHECKED | RWC |

LOCHNER
H.W. LOCHNER, INC., CHICAGO, ILLINOIS

t:\2082\st-uct\dgn\2044029PD3.dgn