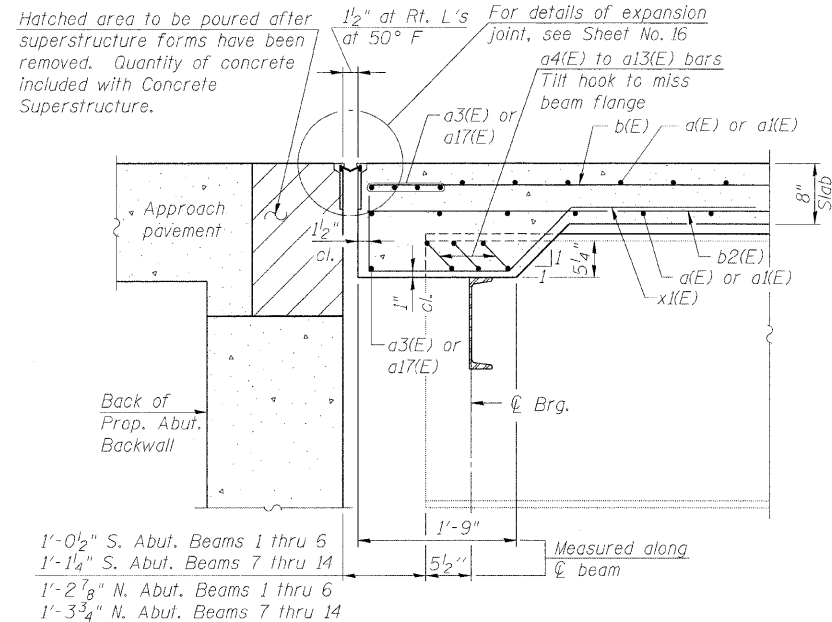


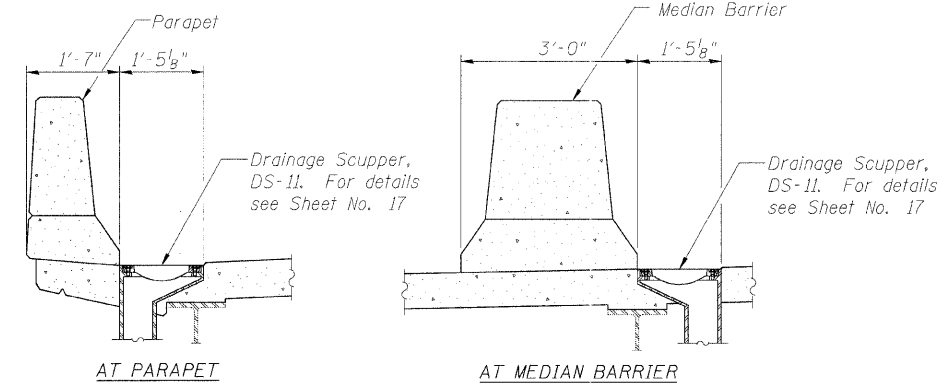
STATE OF ILLINOIS
DEPARTMENT OF TRANSPORTATION

ROUTE NO.	SECTION	COUNTY	MILES	SHEET NO.	SHEET NO. 14
F.A.P. 308	*	ROCK ISLAND	210	129	32 SHEETS
FED. ROAD DIST. NO. 7	ILLINOIS	FED. AID PROJECT			

Contract #64814 * (HB, HB-1, VB, HB-2)R



SECTION A-A



SECTION B-B

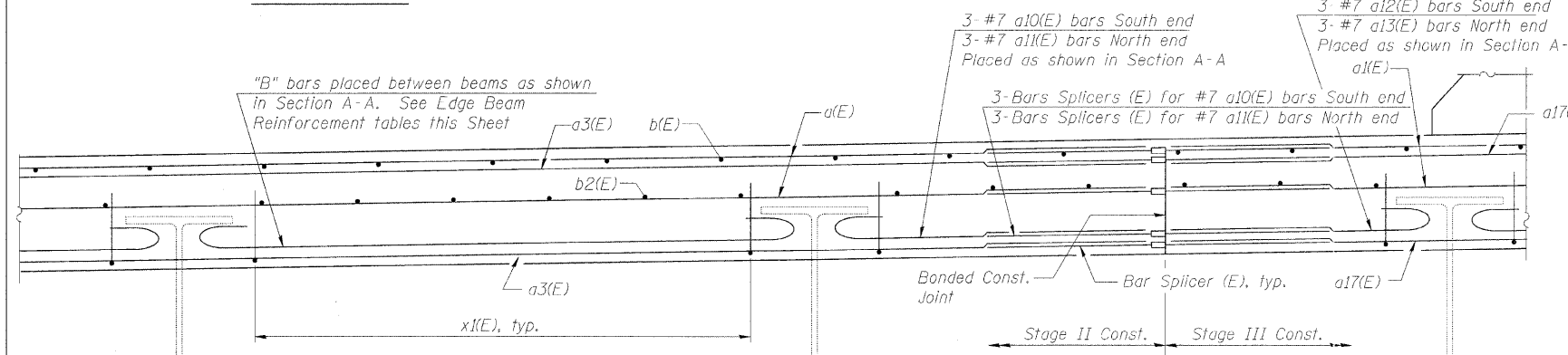
Notes:
For location of Drainage Scuppers see Sheet No. 18
Cut longitudinal reinforcement to clear drainage scuppers.
For drainage system details see Sheet No. 18

SUPERSTRUCTURE
BILL OF MATERIAL

Bar	No.	Size	Length	Shape
a(E)	715	#5	42'-2"	—
a1(E)	687	#5	38'-2"	—
a2(E)	378	#6	7'-0"	—
a3(E)	20	#8	40'-5"	—
a4(E)	18	#7	10'-11"	—
a5(E)	18	#7	11'-5"	—
a6(E)	3	#7	5'-2"	—
a7(E)	15	#7	10'-6"	—
a8(E)	3	#7	9'-7"	—
a9(E)	15	#7	11'-2"	—
a10(E)	3	#7	5'-5"	—
a11(E)	3	#7	7'-11"	—
a12(E)	3	#7	5'-2"	—
a13(E)	3	#7	3'-2"	—
a14(E)	10	#8	10'-0"	—
a16(E)	48	#5	1'-6"	—
a17(E)	20	#8	35'-11"	—

SUPERSTRUCTURE
BILL OF MATERIAL (CONT'D)

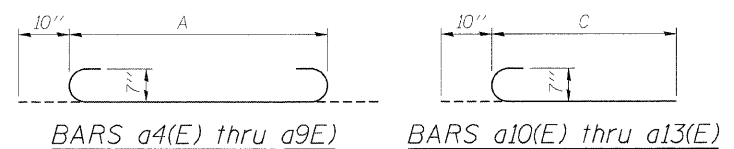
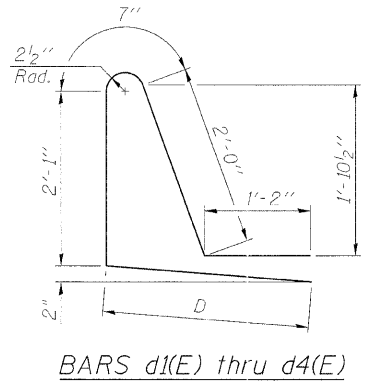
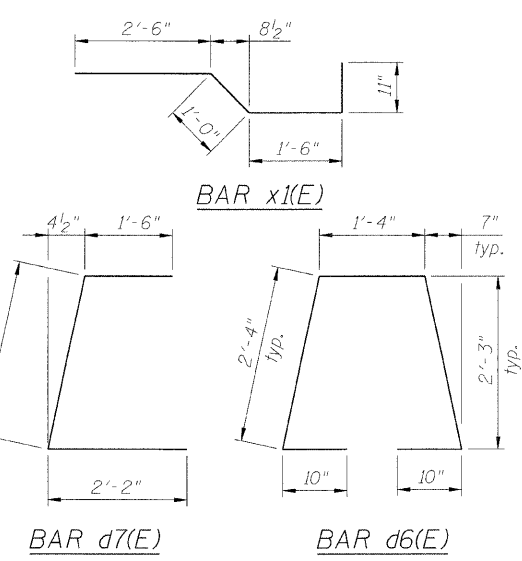
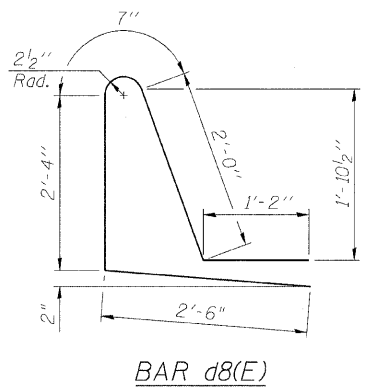
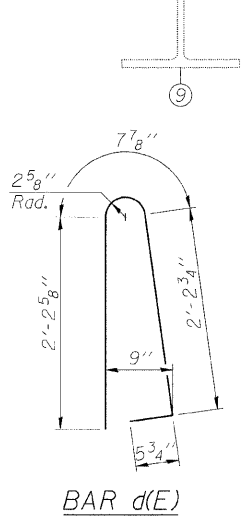
Bar	No.	Size	Length	Shape
b(E)	672	#5	30'-10"	—
b1(E)	162	#6	47'-0"	—
b2(E)	574	#5	34'-11"	—
d(E)	549	#5	5'-7"	—
d1(E)	141	#5	8'-4"	—
d2(E)	91	#5	8'-6"	—
d3(E)	23	#5	8'-10"	—
d4(E)	246	#5	8'-9"	—
d5(E)	34	#4	5'-6"	—
d6(E)	312	#5	7'-8"	—
d7(E)	624	#5	6'-3"	—
d8(E)	48	#5	8'-7"	—
e(E)	14	#4	19'-2"	—
e1(E)	100	#4	11'-2"	—
e2(E)	21	#4	16'-2"	—
e3(E)	7	#4	16'-5"	—
e4(E)	21	#4	19'-7"	—
e5(E)	35	#4	18'-4"	—
e6(E)	7	#4	14'-3"	—
e7(E)	57	#4	15'-6"	—
e8(E)	7	#4	18'-6"	—
e9(E)	4	#8	31'-6"	—
e10(E)	16	#8	11'-2"	—
e11(E)	2	#8	34'-8"	—
e12(E)	12	#8	30'-5"	—
e13(E)	6	#8	33'-5"	—
e14(E)	4	#4	30'-6"	—
e15(E)	2	#4	33'-8"	—
e16(E)	4	#4	28'-8"	—
e17(E)	2	#4	31'-7"	—
e18(E)	54	#4	18'-11"	—
e19(E)	36	#4	14'-8"	—
e31(E)	3	#4	11'-6"	—
e32(E)	3	#4	12'-0"	—
e33(E)	3	#4	7'-8"	—
e34(E)	3	#4	7'-5"	—
e35(E)	2	#8	10'-5"	—
e36(E)	7	#4	19'-11"	—
e37(E)	20	#4	9'-8"	—
e38(E)	2	#8	8'-5"	—
e39(E)	4	#8	29'-8"	—
x(E)	154	#5	5'-11"	—
Reinforcement Bars, Epoxy Coated	Pound	145,780		
Concrete Superstructure	Cu. Yd.	648.7		



SECTION C-C
Outside of Exterior Beam

EDGE BEAM REINFORCEMENT

Between Beams	"B"	Between Beams	"B"
1 and 2	3-#7 a9(E)	1 and 2	3-#7 a7(E)
2 and 3	3-#7 a9(E)	2 and 3	3-#7 a7(E)
3 and 4	3-#7 a9(E)	3 and 4	3-#7 a7(E)
4 and 5	3-#7 a9(E)	4 and 5	3-#7 a7(E)
5 and 6	3-#7 a9(E)	5 and 6	3-#7 a7(E)
6 and 7	3-#7 a8(E)	6 and 7	3-#7 a6(E)
8 and 9	3-#7 a5(E)	8 and 9	3-#7 a4(E)
9 and 10	3-#7 a5(E)	9 and 10	3-#7 a4(E)
10 and 11	3-#7 a5(E)	10 and 11	3-#7 a4(E)
11 and 12	3-#7 a5(E)	11 and 12	3-#7 a4(E)
12 and 13	3-#7 a5(E)	12 and 13	3-#7 a4(E)
13 and 14	3-#7 a5(E)	13 and 14	3-#7 a4(E)



DESIGNED	AMK
CHECKED	CMM
DRAWN	AMK
CHECKED	RWC

LOCHNER
H.W. LOCHNER, INC., CHICAGO, ILLINOIS

NOTES

1. For location of Section A-A and View D-D, see Sheet No. 10

DECK DETAILS
IL ROUTE 92 (CENTENNIAL EXPRESSWAY)
OVER IAIS RAILROAD
FAP ROUTE 308 SEC. 1(VB)R
ROCK ISLAND COUNTY
STATION 1507+04.10
STRUCTURE NO. 081-0064

t:\2082\structure\dgn\ZD44029PD4.dgn