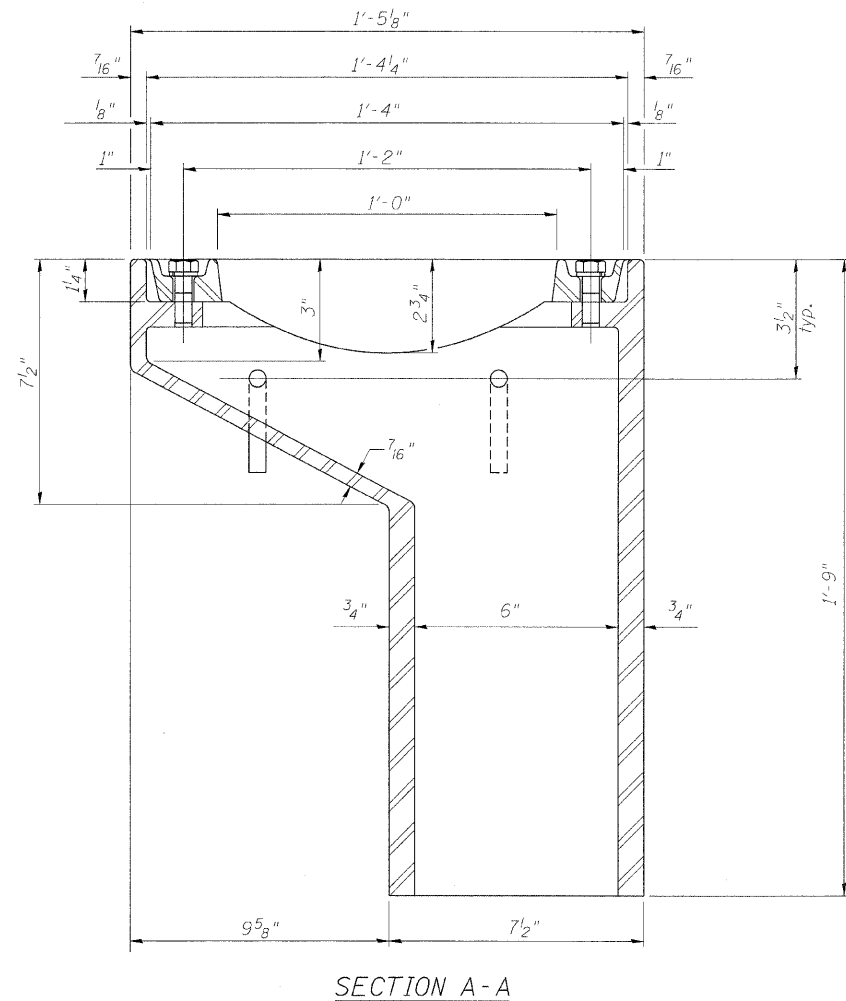
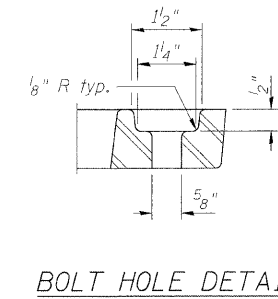
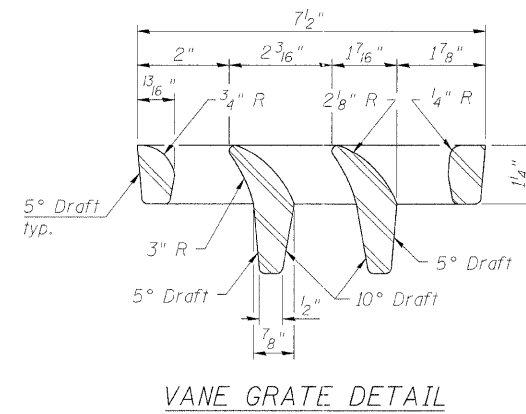
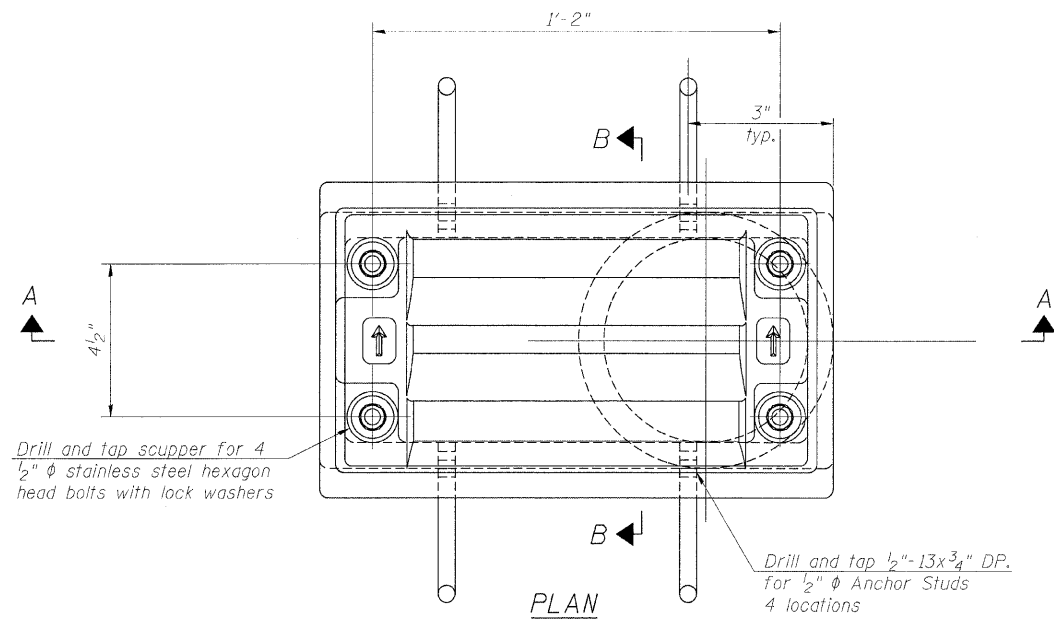


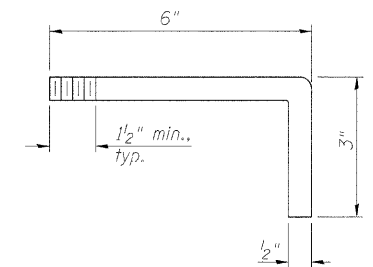
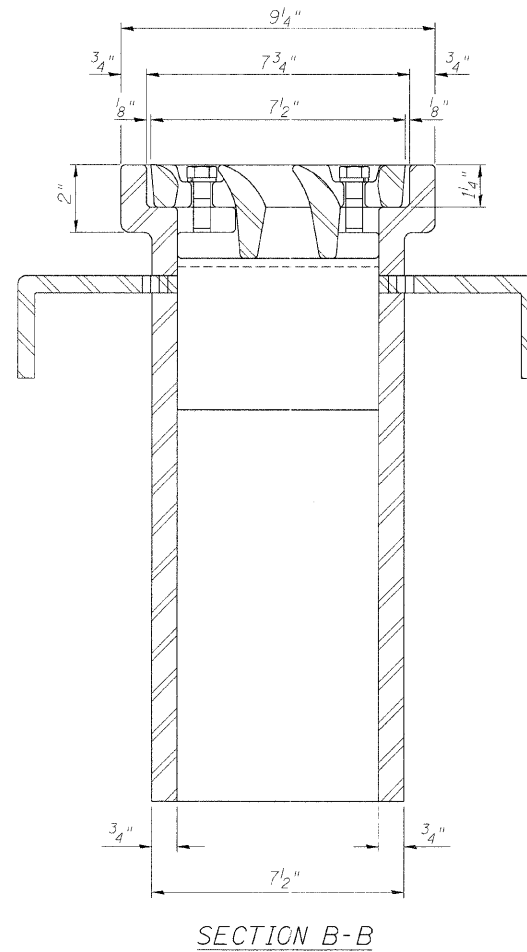
STATE OF ILLINOIS  
DEPARTMENT OF TRANSPORTATION

ROUTE NO.	SECTION	COUNTY	SHEET NO.	SHEET	SHEET NO. 17
F.A.P. 308	#	ROCK ISLAND	210	132	32 SHEETS
FED. ROAD DIST. NO. 7	ILLINOIS	FED. AID PROJECT			

Contract #64814 \* (HB,HB-1,VB,HB-2)R



See Sheet No. 14 for scupper location relative to the Parapet and Median Barrier



ANCHOR STUD DETAIL

BILL OF MATERIAL

Item	Unit	Total
Drainage Scupper, DS-11	Each	6

DRAINAGE SCUPPER, DS-11  
IL ROUTE 92 (CENTENNIAL EXPRESSWAY)  
OVER IAIS RAILROAD  
FAP ROUTE 308 SEC. 1(VB)R  
ROCK ISLAND COUNTY  
STATION 1507+04.10  
STRUCTURE NO. 081-0064

DESIGNED	AMK
CHECKED	CMM
DRAWN	OS
CHECKED	RWC

**LOCHNER**  
H.W. LOCHNER, INC., CHICAGO, ILLINOIS

t:\2082\struet\cgn\2044029SP1.dgn