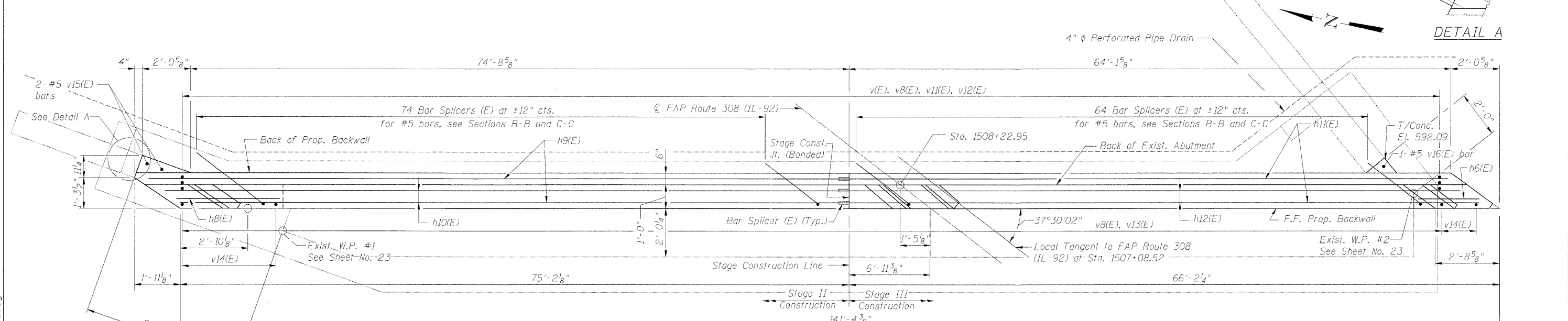
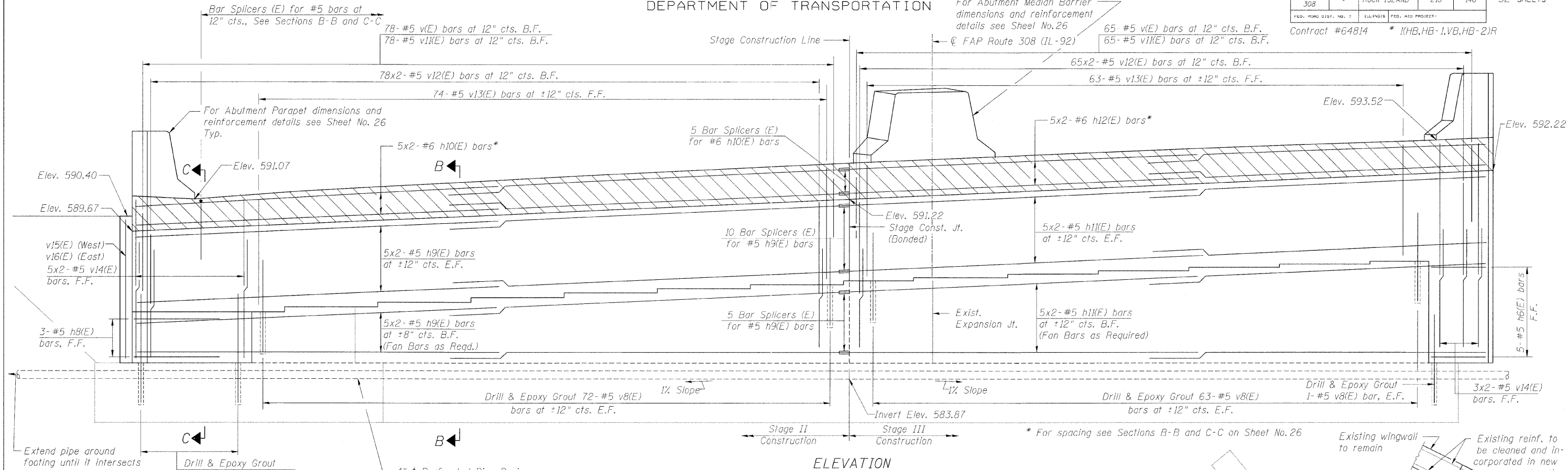


STATE OF ILLINOIS  
DEPARTMENT OF TRANSPORTATION

ROUTE NO.	SECTION	COUNTY	TOTAL SHEETS	SHEET NO.	SHEET NO. 25
F.A.P. 308	*	ROCK ISLAND	210	140	32 SHEETS
FED. ROAD DIST. NO. 7	ILLINOIS	FED. AID PROJECT	Contract #64814 * (HB,HB-1,VB,HB-2)R		



DESIGNED	AMK
CHECKED	JSD
DRAWN	EF
CHECKED	JSD

**LOCHNER**  
H.W. LOCHNER, INC., CHICAGO, ILLINOIS

**MINIMUM BAR LAP**

#5 bar = 3'-0" (horizontal bars)

#5 bar = 2'-2" (vertical bars)

#6 bar = 3'-7"

**LEGEND**

Hatched area to be poured after superstructure falsework has been removed. Quantity of concrete included with Concrete Superstructure.

- NOTES**
- For Bill of Material see Sheet No.26
  - Drill and epoxy grouting of bars is included with the cost of Concrete Structures.
  - Bars indicated thus 5x2-#5 etc. indicates 5 lines of bars with 2 lengths per line.
  - F.F. denotes Front Face; B.F. denotes Back Face; E.F. denotes Each Face
  - For bar splicers see Sheet No.29
  - For Sections B-B and C-C see Sheet No.26
  - For existing abutment concrete removal details see Sheet No.23

**NORTH ABUTMENT**  
IL ROUTE 92 (CENTENNIAL EXPRESSWAY)  
OVER IAIS RAILROAD  
FAP ROUTE 308 SEC. 1(VB)R  
ROCK ISLAND COUNTY  
STATION 1507+04.10  
STRUCTURE NO. 081-0064

t:\2082\structure\2044029\A1.dgn