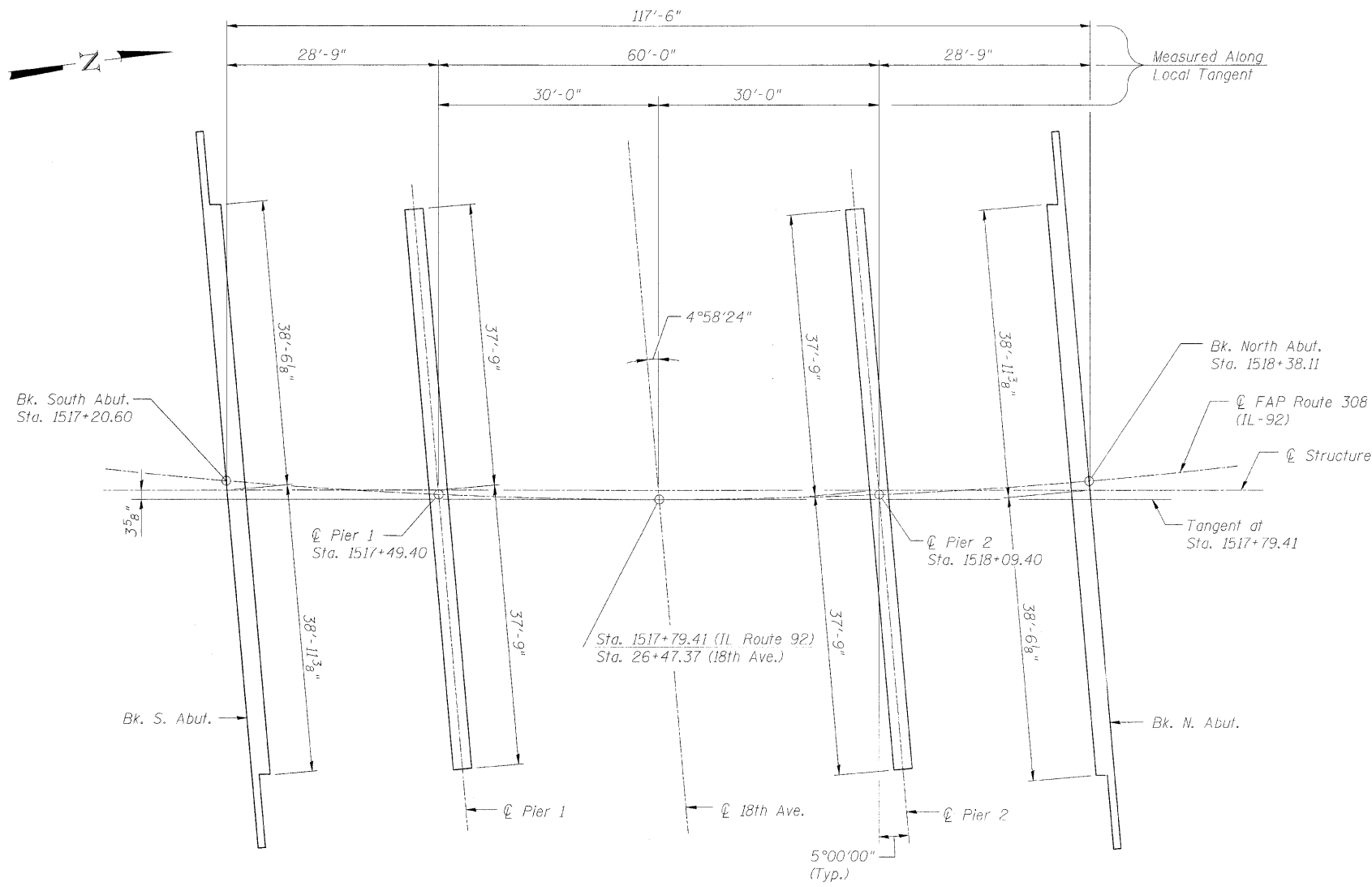


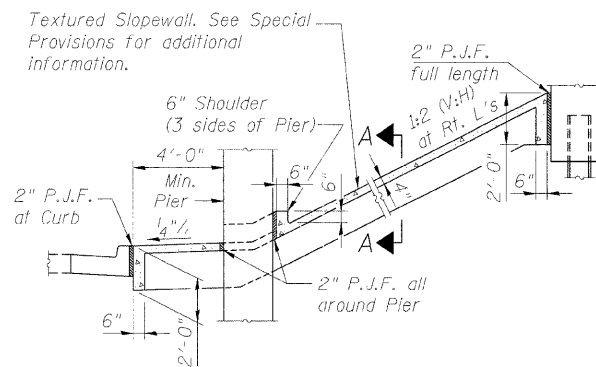
STATE OF ILLINOIS
DEPARTMENT OF TRANSPORTATION

ROUTE NO.	SECTION	COUNTY	SHEET	SHEET NO.
F.A.P. 308	*	ROCK ISLAND	210	150
FED. ROAD DIST. NO. 7		ILLINOIS	FED. AID PROJECT	
Contract #64814		* (1HB, HB-1, VB, HB-2)R		

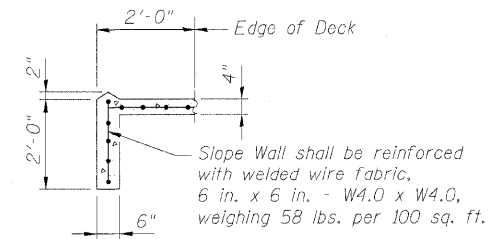
28 SHEETS



FOOTING LAYOUT



SECTION THRU SLOPEWALL



SECTION A-A

FOOTING LAYOUT
IL ROUTE 92 (CENTENNIAL EXPRESSWAY)
OVER 18th AVENUE
FAP ROUTE 308 SEC. 1(HB-1)R
ROCK ISLAND COUNTY
STATION 1517+79.41
STRUCTURE NO. 081-0171

DESIGNED	AMK
CHECKED	CMM
DRAWN	OS
CHECKED	RWC

LOCHNER
H.W. LOCHNER, INC., CHICAGO, ILLINOIS

t:\2082\structure\dgn\2044028LA1.dgn