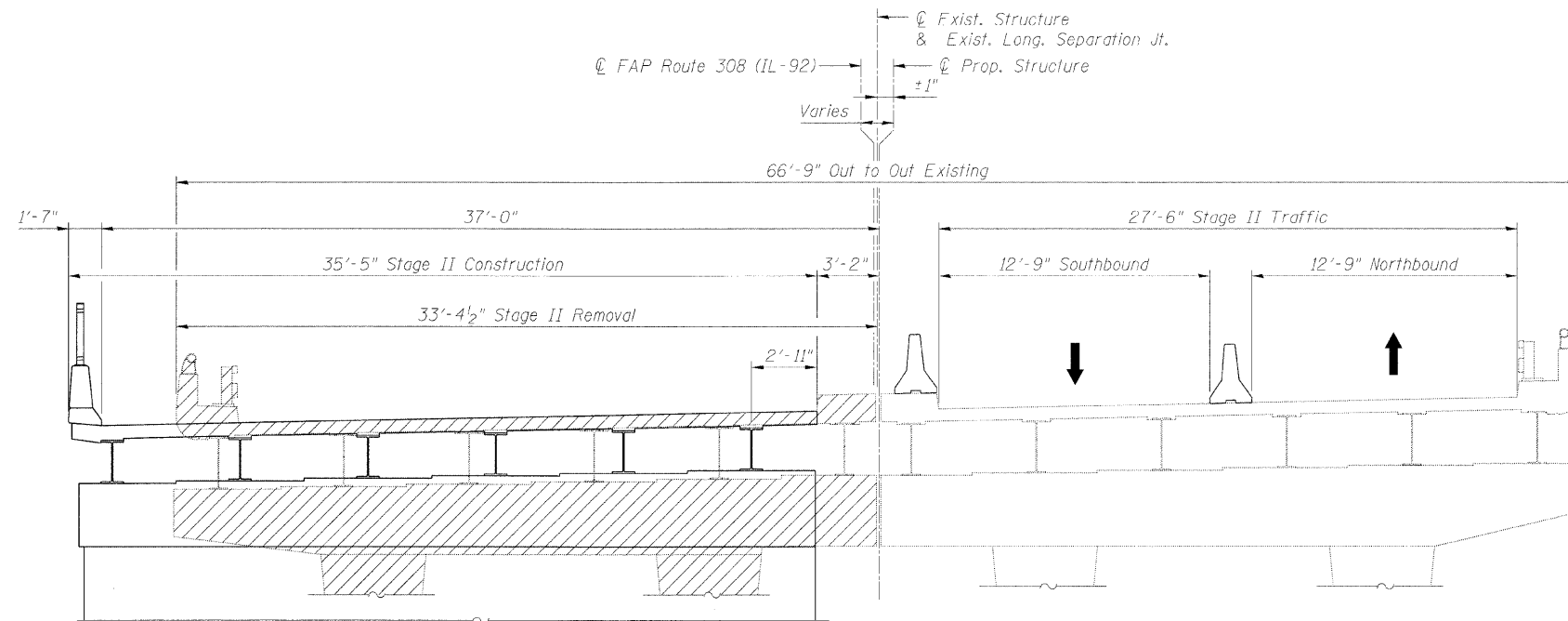


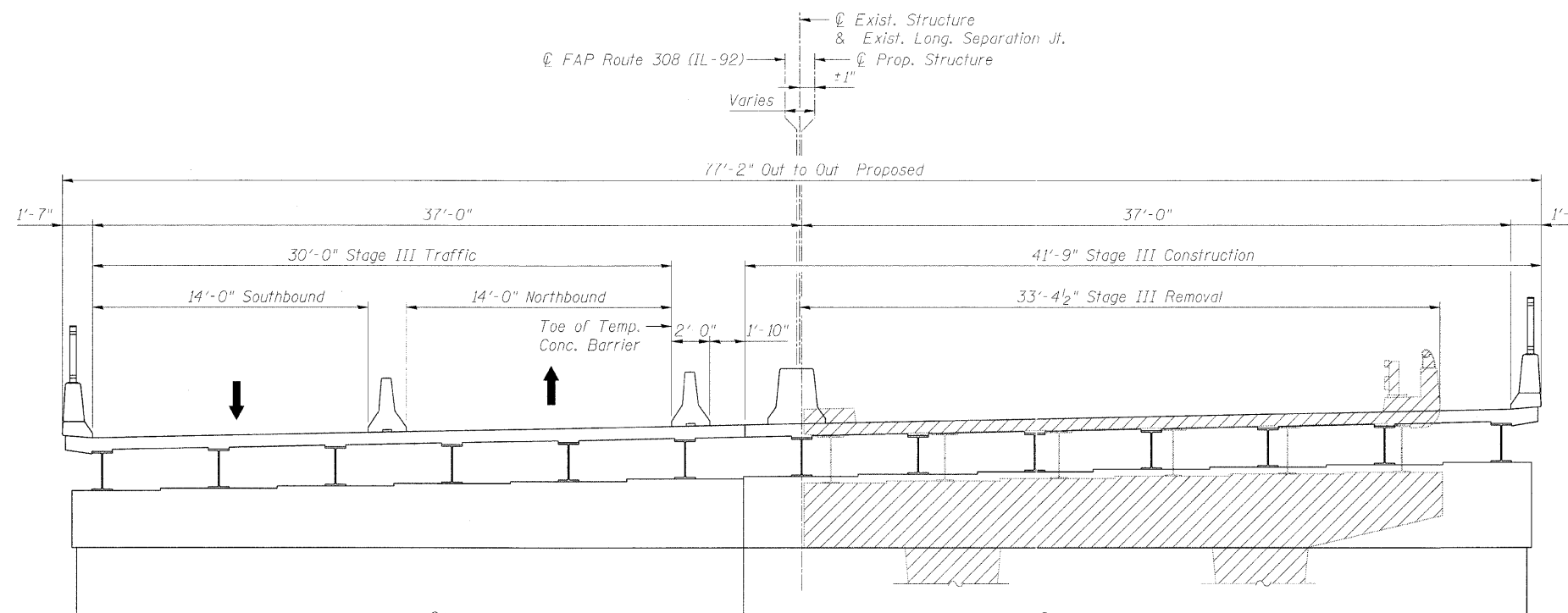
STATE OF ILLINOIS
DEPARTMENT OF TRANSPORTATION

ROUTE NO. F.A.P. 308	SECTION *	COUNTY ROCK ISLAND	STATION 210	SHEET 151	SHEET NO. 4 28 SHEETS
FED. ROAD DIST. NO. 7		ILLINOIS		FED. AID PROJECT	

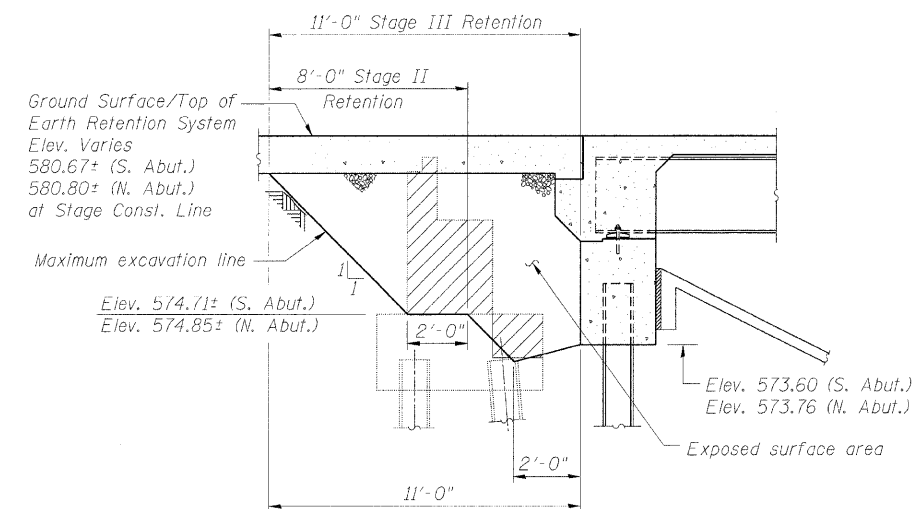
Contract #64814 * (1HB, HB-1, VB, HB-2)R



CROSS SECTION (STAGE II)
Looking North



CROSS SECTION (STAGE III)
Looking North



TEMPORARY SOIL RETENTION SYSTEM
BOTH ABUTMENTS

Note:
A cantilevered sheet piling design does not appear feasible and additional members or other retention system may be necessary. The Contractor shall submit a temporary soil retention system design including plan details and calculations for review and acceptance by the Engineer.

DESIGNED	AMK
CHECKED	BJN
DRAWN	OS
CHECKED	RWC

LOCHNER
H.W. LOCHNER, INC., CHICAGO, ILLINOIS

LEGEND

 Indicates Removal of Existing Structures

STAGING DETAILS
IL ROUTE 92 (CENTENNIAL EXPRESSWAY)
OVER 18th AVENUE
FAP ROUTE 308 SEC. 1(HB-1)R
ROCK ISLAND COUNTY
STATION 1517+79.41
STRUCTURE NO. 081-0171

t:\2082\struet\dgn\2044028SC1.dgn