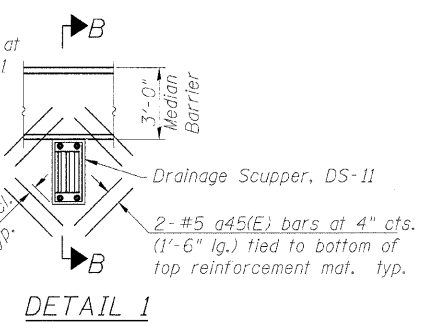
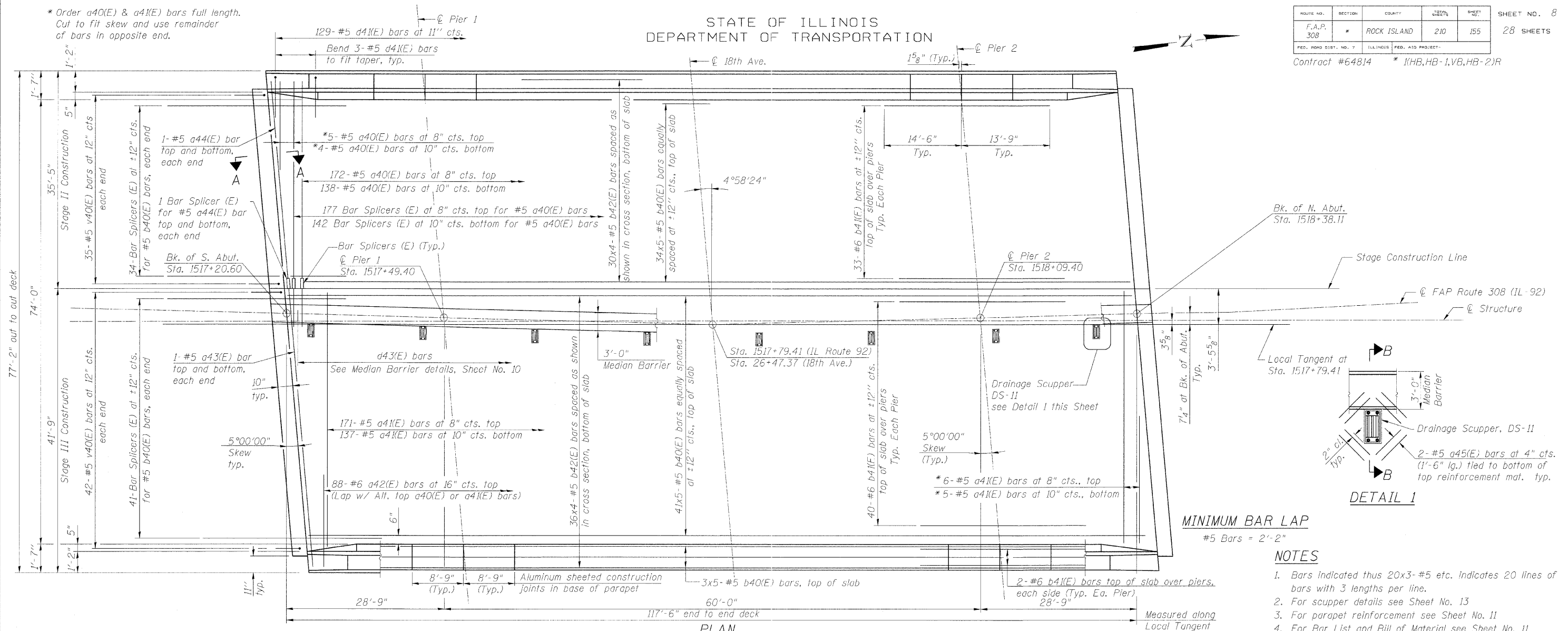


STATE OF ILLINOIS
DEPARTMENT OF TRANSPORTATION

ROUTE NO.	SECTION	COUNTY	STATION	SHEET	SHEET NO.
F.A.P. 308	#	ROCK ISLAND	210	155	28 SHEETS
FED. ROAD DIST. NO. 7 ILLINOIS FED. AID PROJECT					
Contract #64814 * (1HB,HB-1,VB,HB-2)R					

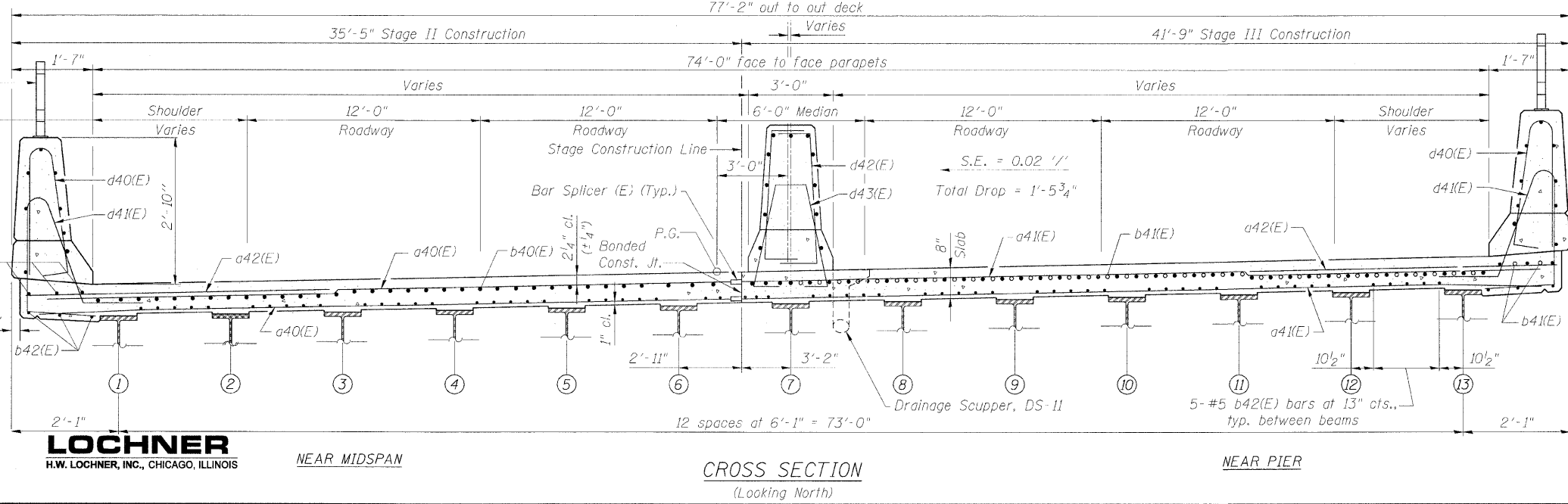


MINIMUM BAR LAP
 #5 Bars = 2'-2"

- NOTES**
1. Bars indicated thus 20x3- #5 etc. indicates 20 lines of bars with 3 lengths per line.
 2. For scupper details see Sheet No. 13
 3. For parapet reinforcement see Sheet No. 11
 4. For Bar List and Bill of Material see Sheet No. 11
 5. For Section A-A see Sheet No. 9
 6. All edges shall have a 3/4" chamfer except as noted.
 7. For median barrier reinforcement, see Sheet No. 10
 8. Cut longitudinal reinforcement to clear drainage scuppers.
 9. Protective coat shall be applied to the deck and top and inside faces of parapet and median barrier.
 10. For spacing of partial depth parapet joints see Sheet No. 11
 11. For spacing of partial depth median barrier joints see Sheet No. 10
 12. For Bar Splicer details see Sheet No. 22
 13. For Section B-B see Sheet No. 10
 14. For scupper layout details see Sheet No. 14

DESIGNED	CMM
CHECKED	JSD
DRAWN	EF
CHECKED	RWC

LOCHNER
 H.W. LOCHNER, INC., CHICAGO, ILLINOIS



DECK PLAN
 IL ROUTE 92 (CENTENNIAL EXPRESSWAY)
 OVER 18th AVENUE
 FAP ROUTE 308 SEC. 1(HB-1)R
 ROCK ISLAND COUNTY
 STATION 1517+79.41
 STRUCTURE NO. 081-0171