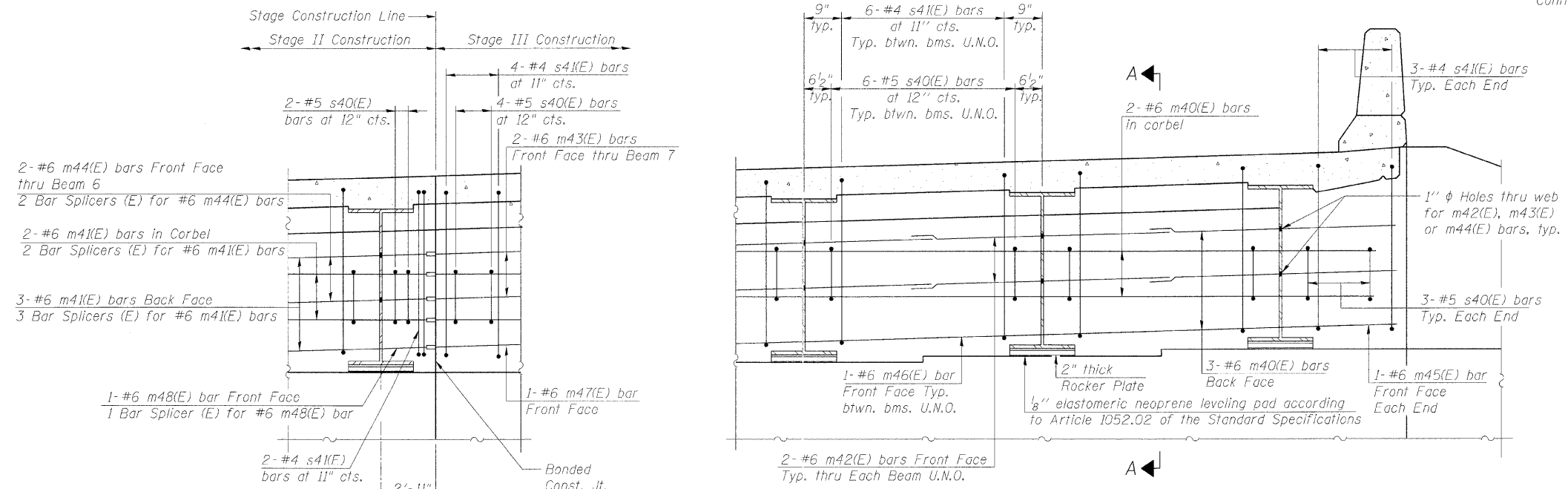


STATE OF ILLINOIS
DEPARTMENT OF TRANSPORTATION

ROUTE NO.	SECTION	COUNTY	SHEET NO.	SHEET	SHEET NO. 9
F.A.P. 308	*	ROCK ISLAND	210	156	28 SHEETS
FED. ROAD DIST. NO. 7	ILLINOIS	FED. AID PROJECT-			

Contract #64814 * (IHB, HB-1, VB, HB-2)R

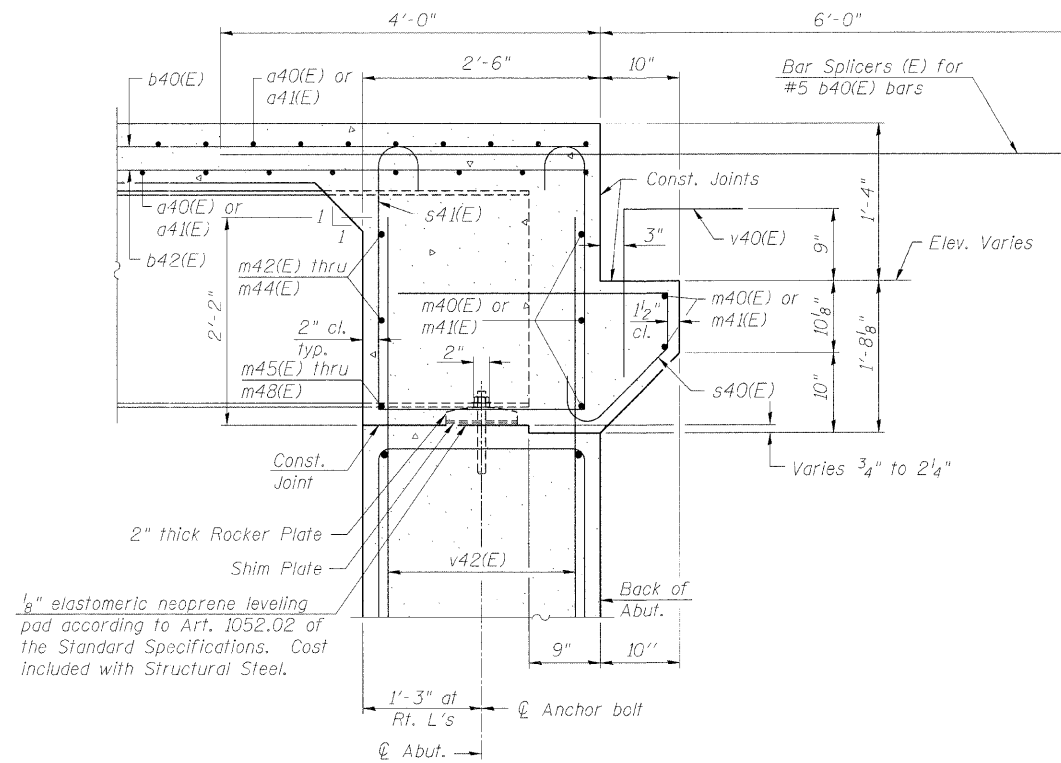


DIAPHRAGM ELEVATION AT ABUTMENT

(Looking North)
(North Abutment Shown, South Abutment Similar, Opposite Hand)

MINIMUM BAR LAP

#6 bar = 2'-9"



SECTION A-A

Dimensions at right angles to abutment, except as shown.

NOTES

1. Reinforcement bars in diaphragm are billed with superstructure on Sheet No. 11
2. Concrete in diaphragm is included with Concrete Superstructure on Sheet No. 11
3. For details of bars s40(E) & s4I(E) see Sheet No. 11
4. The s40(E) and s4I(E) bars shall be placed parallel to the beams. Spacing for these bars shall be at right angles to the beams.
5. For rocker plate detail, see Sheet No. 17
6. For Bar Splicer details, see Sheet No. 22

INTEGRAL ABUTMENT DIAPHRAGM DETAILS
IL ROUTE 92 (CENTENNIAL EXPRESSWAY)
OVER 18th AVENUE
FAP ROUTE 308 SEC. I(HB-1)R
ROCK ISLAND COUNTY
STATION 1517+79.41
STRUCTURE NO. 081-0171

DESIGNED	CMM
CHECKED	AMK
DRAWN	OS
CHECKED	RWC

LOCHNER
H.W. LOCHNER, INC., CHICAGO, ILLINOIS

t:\2082\struc\cogn\2044028SD1.dgn