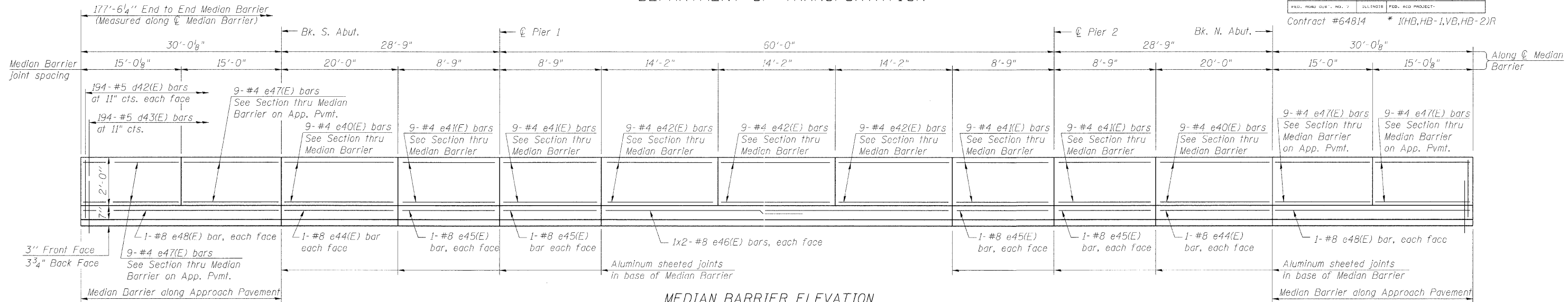
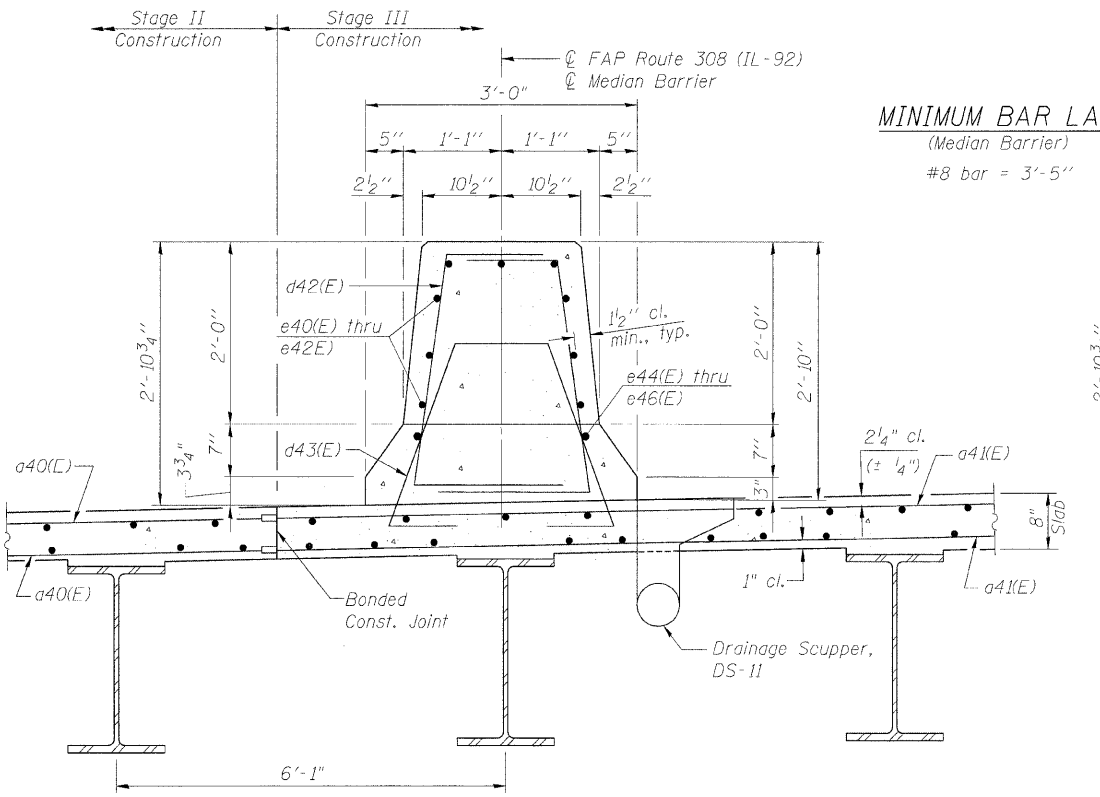


STATE OF ILLINOIS
DEPARTMENT OF TRANSPORTATION

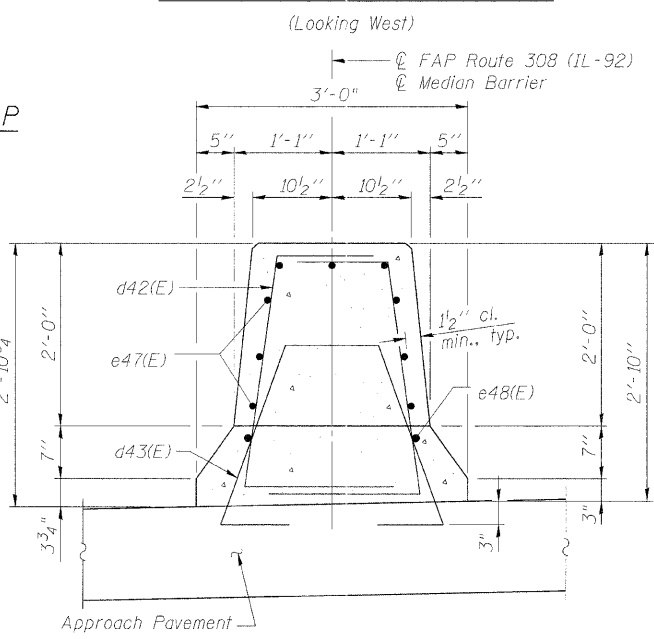
ROUTE NO.	SECTION	COUNTY	TOTAL SHEETS	SHEET NO.	SHEET NO. 10
F.A.P. 308	*	ROCK ISLAND	210	157	28 SHEETS
FED. ROAD DIST. NO. 7	ILLINOIS	FED. AID PROJECT	Contract #64814 * (1HB, HB-1, VB, HB-2)R		



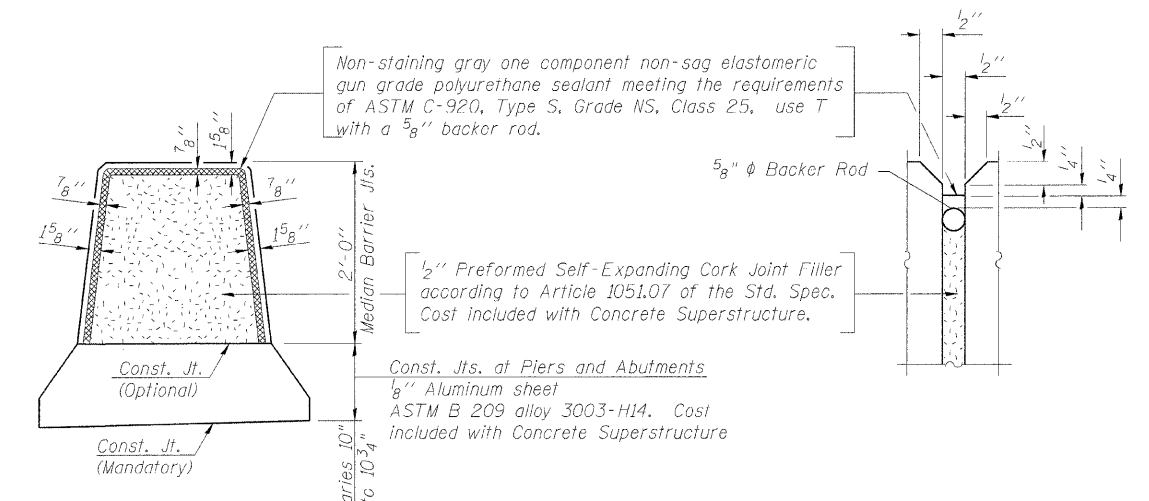
MEDIAN BARRIER ELEVATION
(Looking West)



SECTION THRU MEDIAN BARRIER ON BRIDGE
(Looking North)

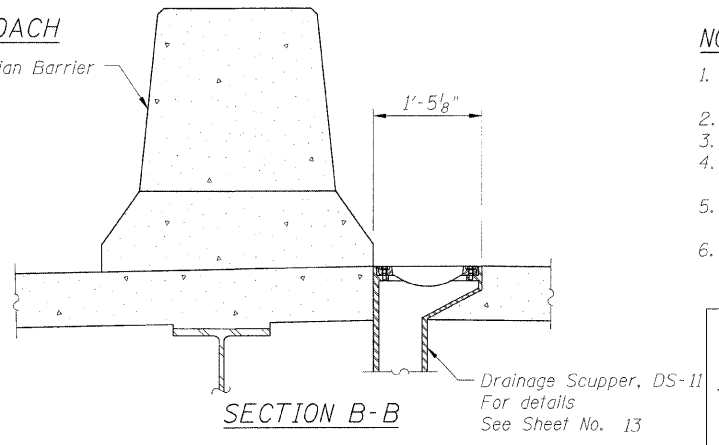


SECTION THRU MEDIAN BARRIER ON APPROACH
(Looking North)
(See Note 5)



MEDIAN BARRIER JOINT DETAILS

- NOTES
1. Bars indicated thus 1x2-#5 etc. indicates 1 line of bars with 2 lengths per line.
 2. For Bar List and Bill of Material see Sheet No. 11
 3. All edges shall have a 3/4" chamfer except as noted.
 4. Cost of median concrete on approach pavement included with Concrete Superstructure.
 5. For Approach Pavement reinforcement and details see IDOT Standard Drawings.
 6. For location of Section B-B, see Sheet No. 8



SECTION B-B

Notes:
For location of Drainage Scuppers see Sheet No. 14
Cut longitudinal reinforcement to clear drainage scuppers.
For drainage system details see Sheet No. 14

MEDIAN BARRIER DETAILS
IL ROUTE 92 (CENTENNIAL EXPRESSWAY)
OVER 18th AVENUE
FAP ROUTE 308 SEC. 1(HB-1)R
ROCK ISLAND COUNTY
STATION 1517+79.41
STRUCTURE NO. 081-0171

DESIGNED	CMM
CHECKED	JSD
DRAWN	OS
CHECKED	RWC

LOCHNER
H.W. LOCHNER, INC., CHICAGO, ILLINOIS

t:\2082\structure\2044028P01.dgn