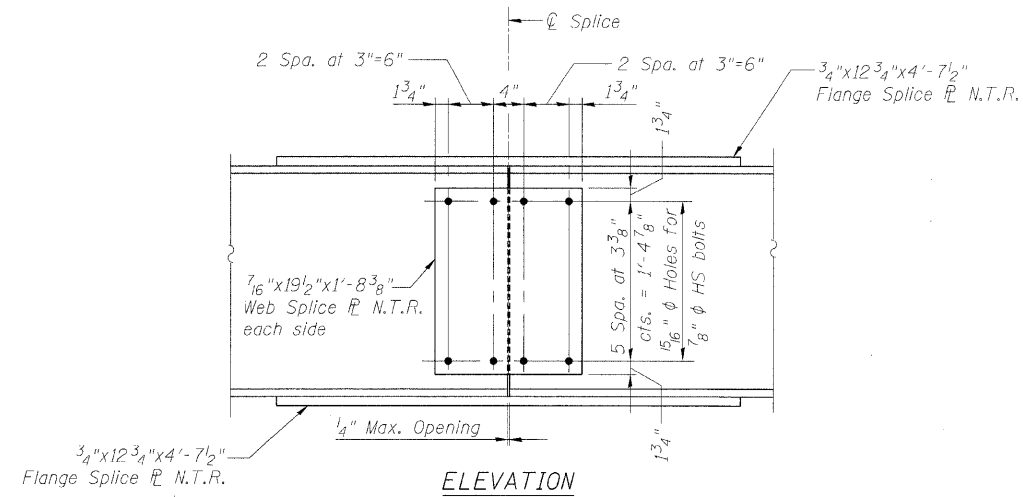


STATE OF ILLINOIS
DEPARTMENT OF TRANSPORTATION

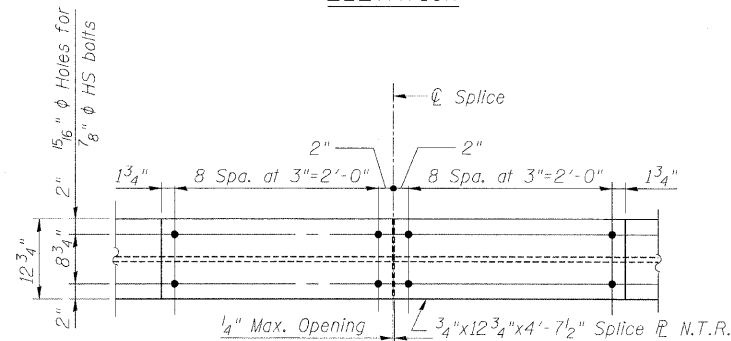
ROUTE NO.	SECTION	COUNTY	TOTAL SHEETS	SHEET NO.
F.A.P. 308	*	ROCK ISLAND	210	163
SHEET NO. 16 28 SHEETS				
FED. ROAD DIST. NO. 7	ILLINOIS	FED. AID PROJECT		

Contract #64814 * (1HB,HB-1,VB,HB-2)R



ELEVATION

3/4"x12 3/4"x4'-7 1/2"
Flange Splice N.T.R.

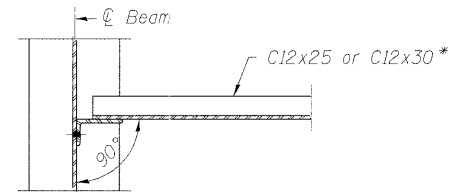


FLANGE SPLICE

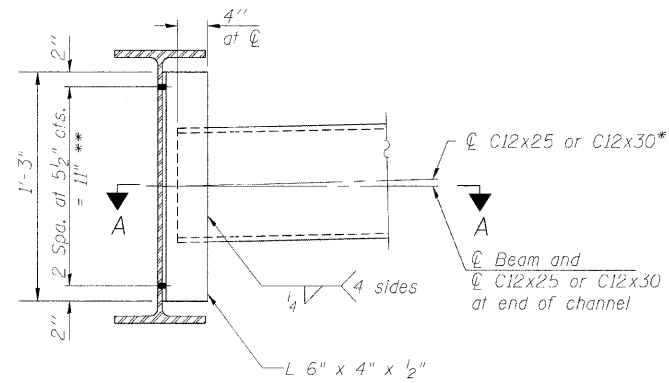
(Top & Bottom Flange Splice Similar)

SPLICE DETAIL

(26 Required)



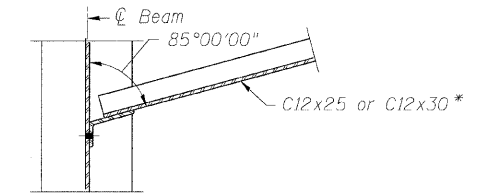
SECTION A-A



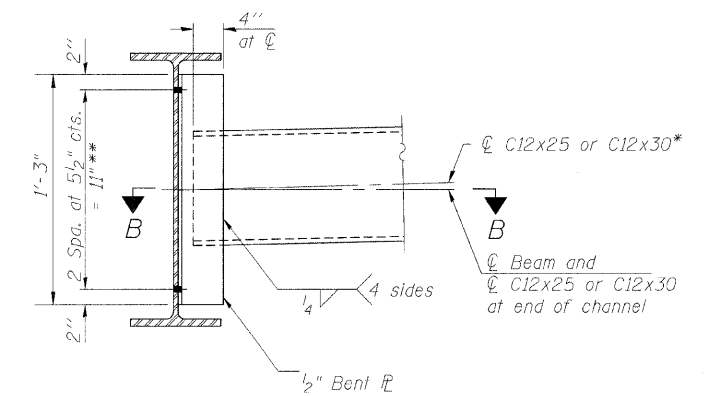
INTERIOR DIAPHRAGM - "D1"

Note:
Two hardened washers required for each set of oversized holes.

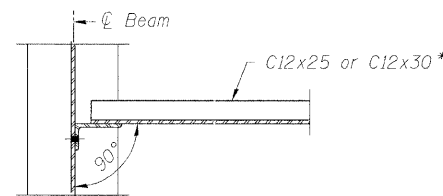
* Alternate channels are permitted to facilitate material acquisition. Calculated weight of structural steel is based on the lighter section.
** 3/4" ϕ HS bolts, 1 5/16" ϕ holes



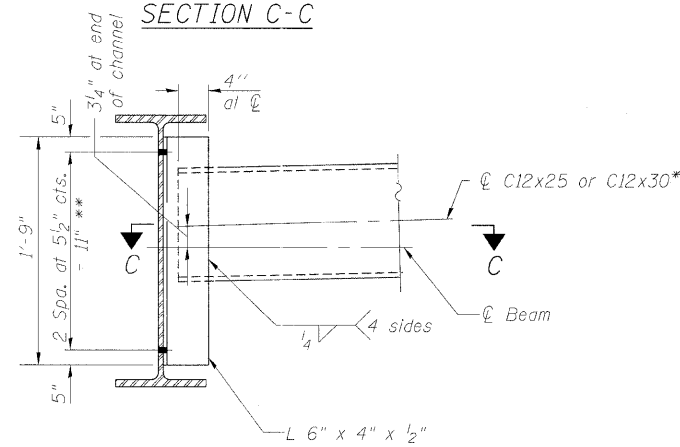
SECTION B-B



INTERIOR DIAPHRAGM - "D2"



SECTION C-C



INTERIOR DIAPHRAGM - "D3"

(Note: "D3" diaphragm placed to accommodate drainage pipe)

NOTES

1. Load carrying components designated "NTR" shall conform to the Supplemental Requirements for Notch Toughness, Zone 2.
2. For bearing details see Sheet No. 17.
3. All steel for the steel beams, including splice plates, shall conform to the requirements of AASHTO M270 Grade 50. All diaphragms, including connection angles and plates, shall conform to the requirements of AASHTO M270 Grade 36.
4. For framing plan and beam elevation see Sheet No. 15.
5. All cross frames or diaphragms shall be installed as steel is erected and secured with erection pins and bolts except as otherwise noted. Individual cross frames or diaphragms at supports may be temporarily disconnected to install bearing anchor rods.

STEEL DETAILS 1
IL ROUTE 92 (CENTENNIAL EXPRESSWAY)
OVER 18th AVENUE
FAP ROUTE 308 SEC. 1(HB-1)R
ROCK ISLAND COUNTY
STATION 1517+79.41
STRUCTURE NO. 081-0171

DESIGNED	CMM
CHECKED	AMK
DRAWN	EF
CHECKED	RWC

LOCHNER
H.W. LOCHNER, INC., CHICAGO, ILLINOIS