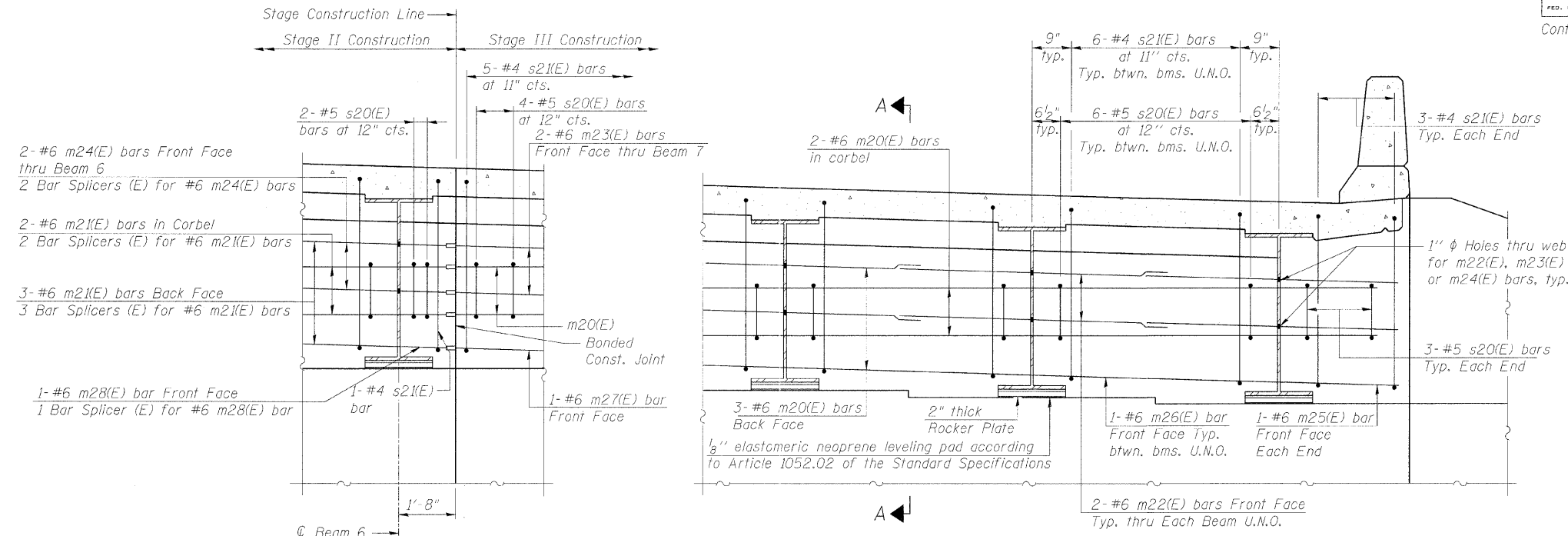


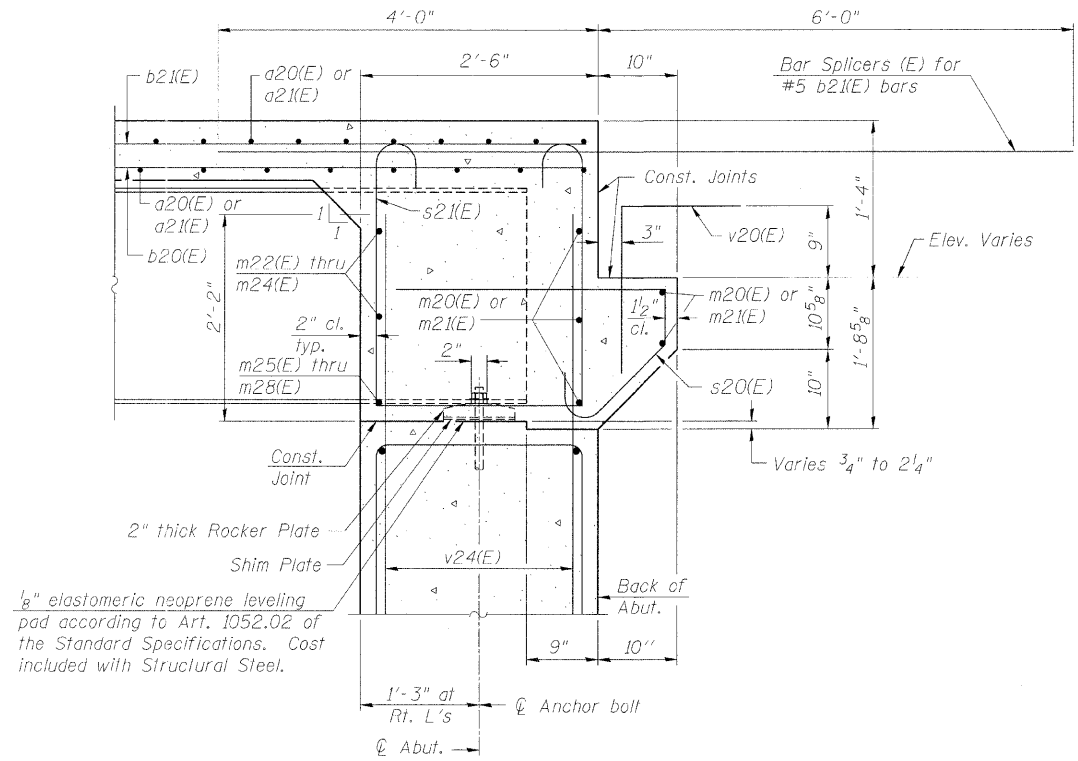
STATE OF ILLINOIS
DEPARTMENT OF TRANSPORTATION

ROUTE NO.	SECTION	COUNTY	TOTAL SHEETS	SHEET NO.	SHEET NO. 9
F.A.P. 308	*	ROCK ISLAND	210	184	27 SHEETS
FED. ROAD DIST. NO. 7	ILLINOIS	FED. AID PROJECT	Contract #64814 * (HB,HB-1,VB,HB-2)R		



DIAPHRAGM ELEVATION AT ABUTMENT
(Looking North)
(North Abutment Shown, South Abutment Similar, Opposite Hand)

MINIMUM BAR LAP
#6 bar = 2'-9"



SECTION A-A
Dimensions at right angles to abutment, except as shown.

- NOTES**
1. Reinforcement bars in diaphragm are billed with superstructure on Sheet No. 11
 2. Concrete in diaphragm is included with Concrete Superstructure on Sheet No. 11
 3. For details of bars s20(E) and s21(E) see Sheet No. 11
 4. The s20(E) and s21(E) bars shall be placed parallel to the beams. Spacing for these bars shall be at right angles to the beams.
 5. For Bar Splicer details see Sheet No. 23
 6. For Rocker Plate details see Sheet No. 17

INTEGRAL ABUTMENT DIAPHRAGM DETAILS
IL ROUTE 92 (CENTENNIAL EXPRESSWAY)
OVER 7th AVENUE
FAP ROUTE 308 SEC. 1(HB)R
ROCK ISLAND COUNTY
STATION 1547+22.56
STRUCTURE NO. 081-0170

DESIGNED	CMM
CHECKED	JSD
DRAWN	OS
CHECKED	RWC

LOCHNER
H.W. LOCHNER, INC., CHICAGO, ILLINOIS

t:\2062\structure\dgn\2044027SD1.dgn