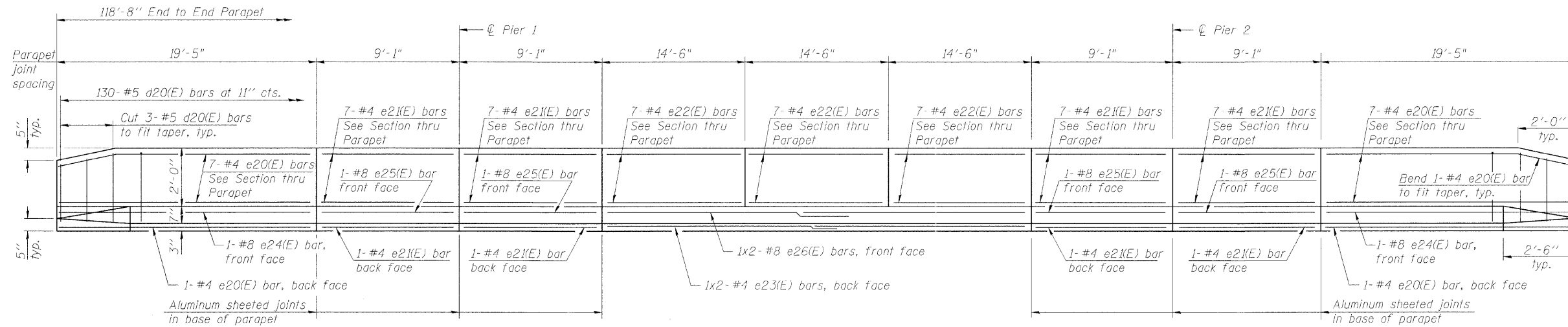


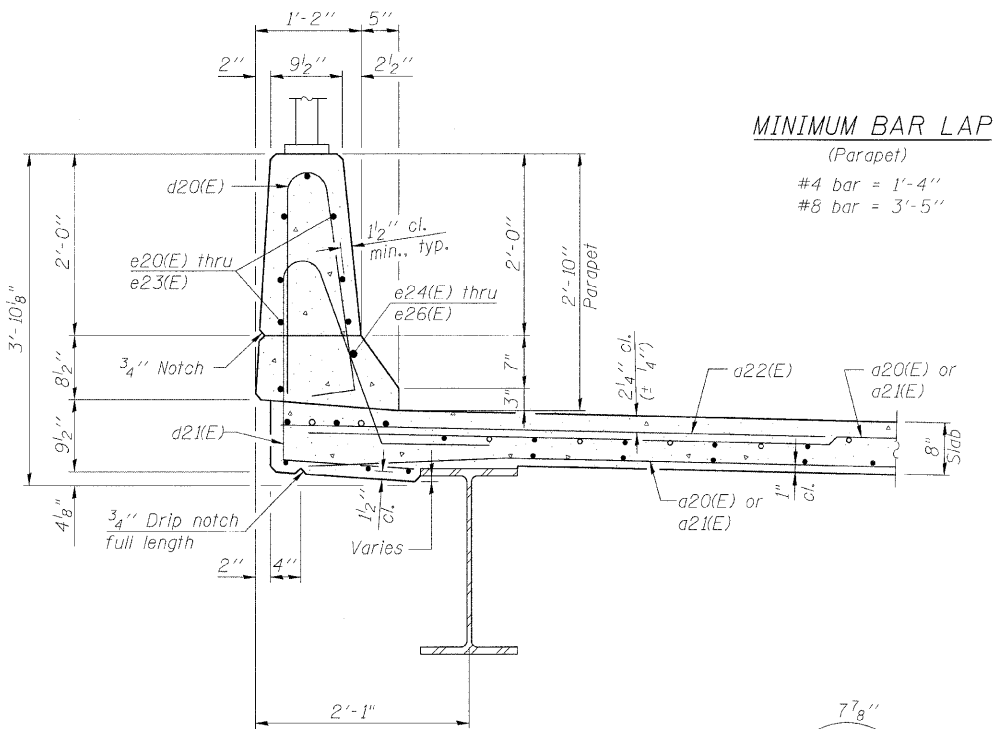
STATE OF ILLINOIS
DEPARTMENT OF TRANSPORTATION

ROUTE NO. F.A.P. 308	SECTION *	COUNTY ROCK ISLAND	SHEET NO. 210	SHEET 186	SHEET NO. 11 27 SHEETS
FED. ROAD DIST. NO. 7		ILLINOIS	FED. AID PROJECT-		

Contract #64814 * (1HB, HB-1, VB, HB-2)R

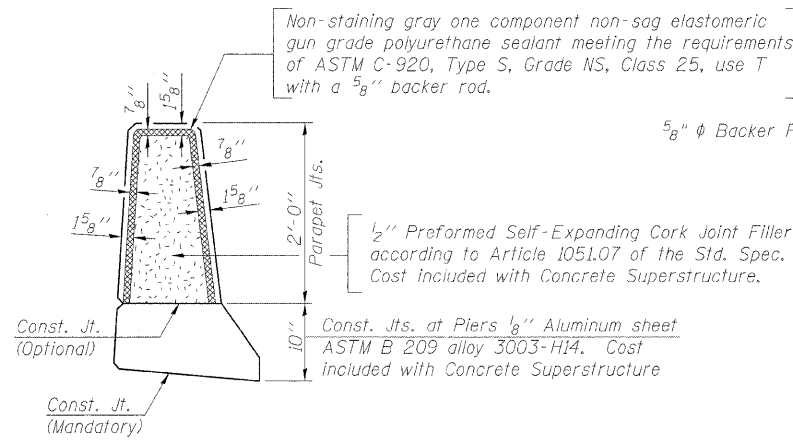


INSIDE ELEVATION OF PARAPET

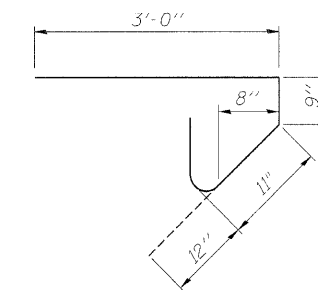


SECTION THRU PARAPET

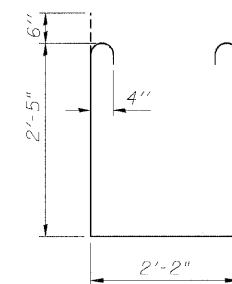
MINIMUM BAR LAP
(Parapet)
#4 bar = 1'-4"
#8 bar = 3'-5"



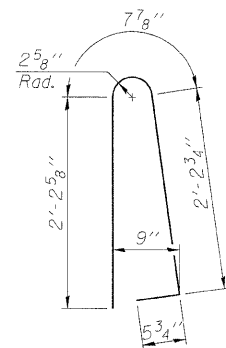
PARAPET JOINT DETAILS



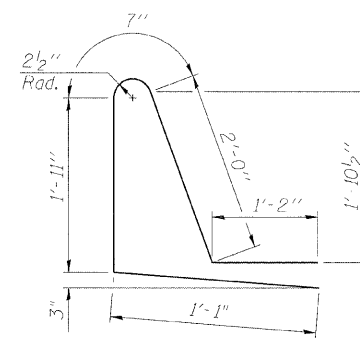
BAR s20(E)



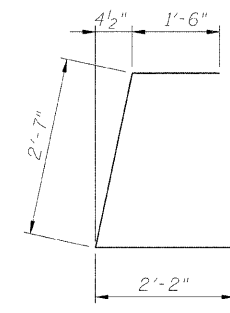
BAR s21(E)



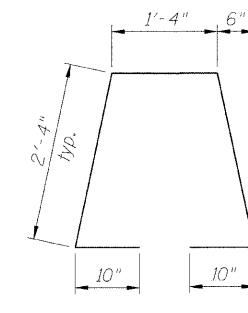
BAR d20(E)



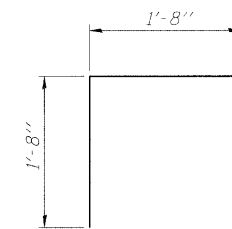
BAR d21(E)



BAR d22(E)



BAR d23(E)



BAR v20(E)

**SUPERSTRUCTURE
BILL OF MATERIAL**

Bar	No.	Size	Length	Shape
a20(E)	322	#5	33'-9"	—
a21(E)	322	#5	42'-7"	—
a22(E)	178	#6	6'-0"	—
a23(E)	64	#5	1'-6"	—
b20(E)	264	#5	31'-3"	—
b21(E)	405	#5	25'-5"	—
b22(E)	154	#6	28'-7"	—
d20(E)	260	#5	5'-7"	⌋
d21(E)	260	#5	6'-9"	⌋
d22(E)	392	#5	6'-3"	⌋
d23(E)	196	#5	7'-8"	⌋
e20(E)	50	#4	19'-1"	—
e21(E)	100	#4	8'-9"	—
e22(E)	69	#4	14'-2"	—
e23(E)	4	#4	22'-3"	—
e24(E)	8	#8	19'-1"	—
e25(E)	16	#8	8'-9"	—
e26(E)	8	#8	23'-4"	—
e27(E)	36	#4	14'-8"	—
e28(E)	4	#8	29'-8"	—
m20(E)	10	#6	42'-7"	—
m21(E)	10	#6	33'-9"	—
m22(E)	44	#6	8'-10"	—
m23(E)	4	#6	9'-9"	—
m24(E)	4	#6	5'-10"	—
m25(E)	4	#6	1'-9"	—
m26(E)	22	#6	5'-9"	—
m27(E)	2	#6	4'-1"	—
m28(E)	2	#6	1'-3"	—
s20(E)	156	#5	5'-8"	⌋
s21(E)	156	#4	8'-0"	⌋
v20(E)	150	#5	3'-4"	⌋
Reinforcement Bars, Epoxy Coated	Pound			68,960
Concrete Superstructure	Cu. Yd.			345.3

NOTES

1. Bars indicated thus 1x2-#5 etc. indicates 1 line of bars with 2 lengths per line.
2. All edges shall have a 3/4" chamfer except as noted.

PARAPET DETAILS
IL ROUTE 92 (CENTENNIAL EXPRESSWAY)
OVER 7th AVENUE
FAP ROUTE 308 SEC. 1(HB)R
ROCK ISLAND COUNTY
STATION 1547+22.56
STRUCTURE NO. 081-0170

DESIGNED	CMM
CHECKED	JSD
DRAWN	OS
CHECKED	RWC

LOCHNER
H.W. LOCHNER, INC., CHICAGO, ILLINOIS

t:\2082\struc\cgn\2044027PD2.dgn