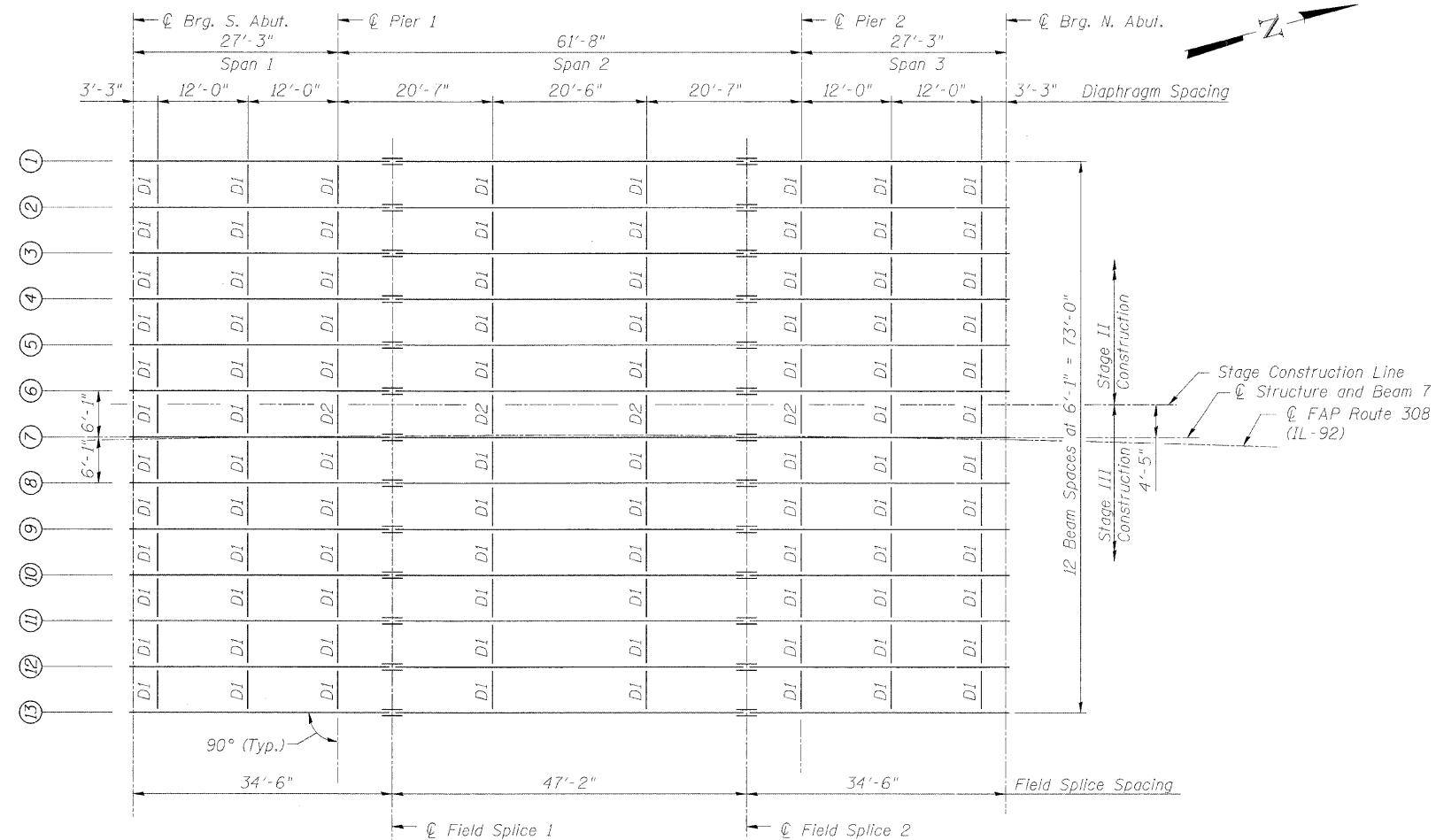


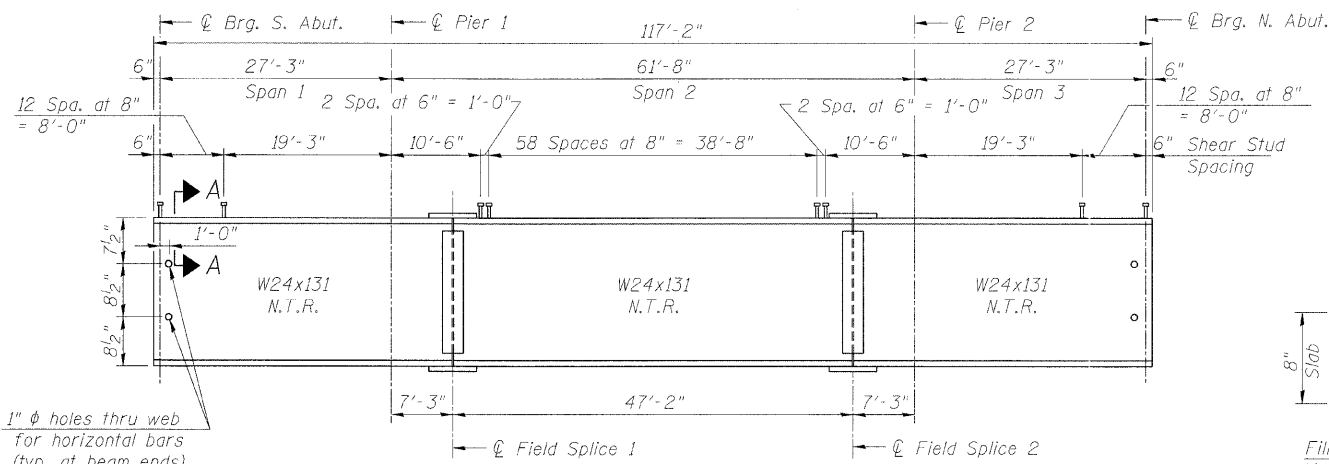
STATE OF ILLINOIS  
DEPARTMENT OF TRANSPORTATION

ROUTE NO.	SECTION	COUNTY	SHEET NO.	SHEET NO.
F.A.P. 308	*	ROCK ISLAND	210	190
SHEET NO. 15 27 SHEETS				
FED. ROAD DIST. NO. 7	ILLINOIS	FED. AID PROJECT		

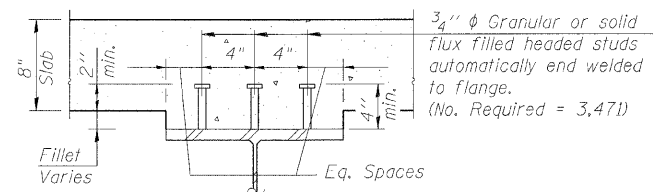
Contract #64814 \* (HB,HB-1,VB,HB-2)R



FRAMING PLAN



BEAM ELEVATION



SECTION A-A

NOTES

1. For Top of Beam Elevations and Moment and Reaction Table see Sheet No. 17
2. For splice and diaphragm details see Sheet No. 16
3. For bearing details see Sheet No. 17
4. All steel for the steel beams, including splice plates, shall conform to the requirements of AASHTO M270 Grade 50. All diaphragms, including connection angles, shall conform to the requirements of AASHTO M270 Grade 36.
5. Load carrying components designated "NTR" shall conform to the Supplemental Requirements for Notch Toughness, Zone 2.

FRAMING PLAN  
IL ROUTE 92 (CENTENNIAL EXPRESSWAY)  
OVER 7th AVENUE  
FAP ROUTE 308 SEC. 1(HB)R  
ROCK ISLAND COUNTY  
STATION 1547+22.56  
STRUCTURE NO. 081-0170

DESIGNED	JSD
CHECKED	RH
DRAWN	OS
CHECKED	RH

**LOCHNER**  
H.W. LOCHNER, INC., CHICAGO, ILLINOIS

t:\2082\str-uct\dgn\2044027FP1.dgn