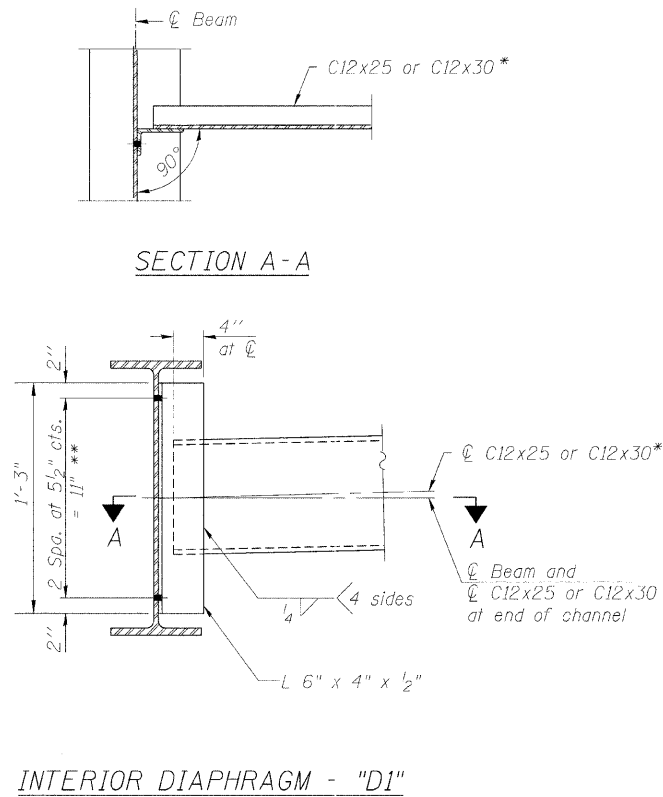
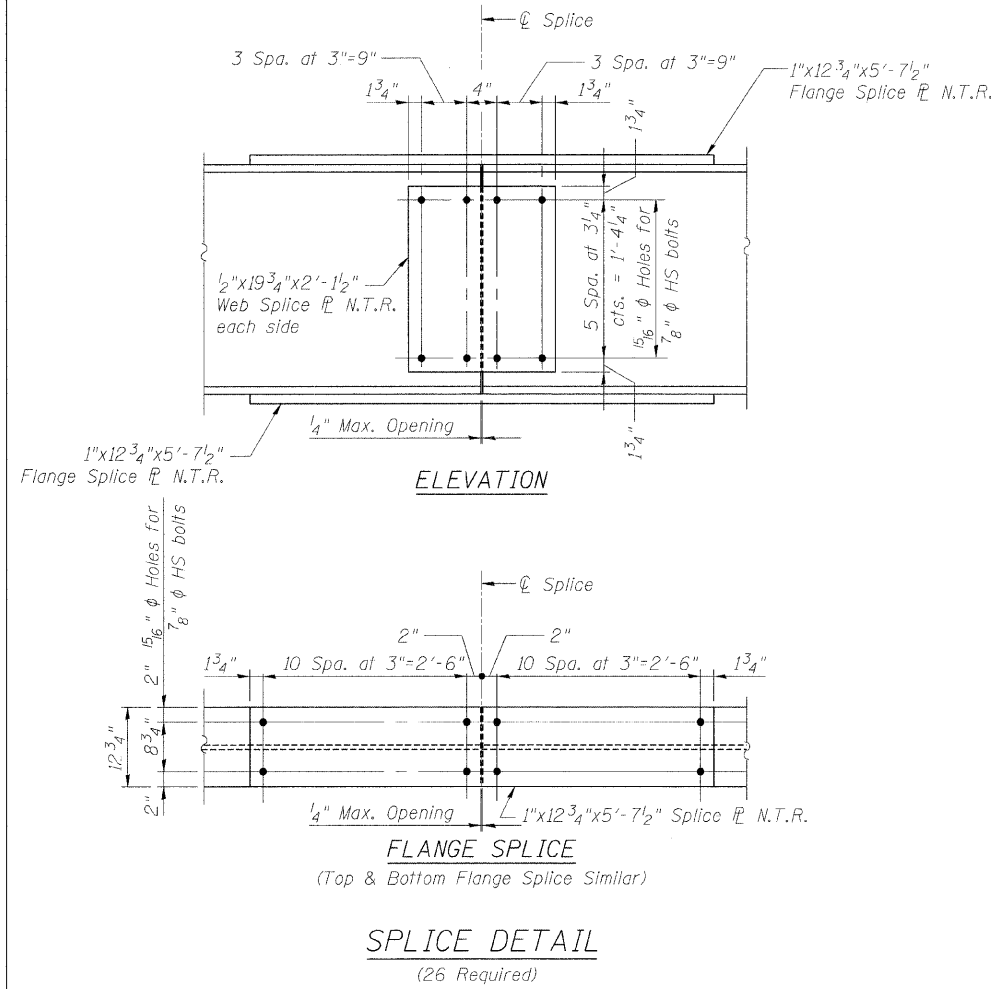


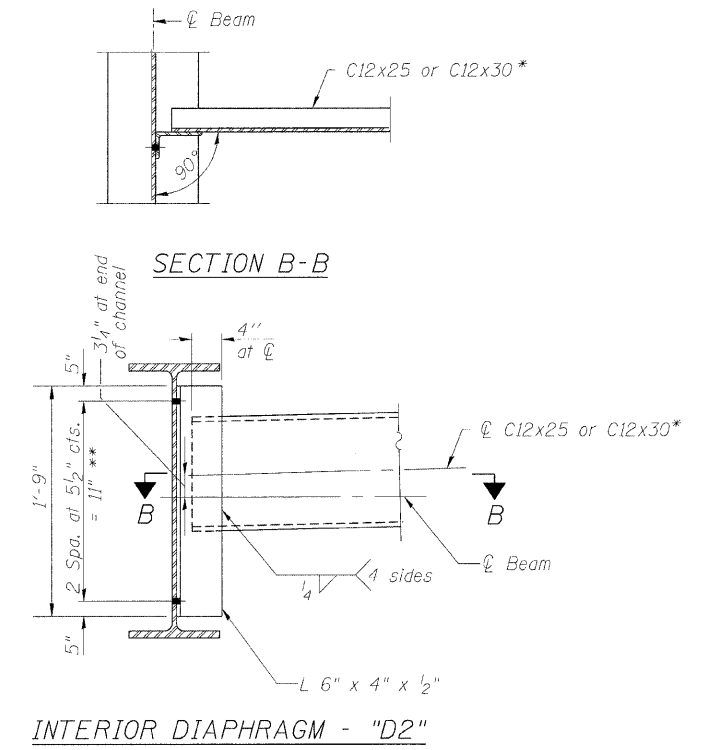
STATE OF ILLINOIS  
DEPARTMENT OF TRANSPORTATION

ROUTE NO.	SECTION	COUNTY	TOTAL SHEETS	SHEET NO.	SHEET NO. 16
F.A.P. 308	*	ROCK ISLAND	210	191	27 SHEETS
FED. ROAD DIST. NO. 7	ILLINOIS	FED. AID PROJECT-			

Contract #64814 \* (HB,HB-1,VB,HB-2)R



Note:  
 Two hardened washers required for each set of oversized holes.  
 \* Alternate channels are permitted to facilitate material acquisition. Calculated weight of structural steel is based on the lighter section.  
 \*\* 3/4" φ HS bolts, 15/16" φ holes



- NOTES**
1. Load carrying components designated "NTR" shall conform to the Supplemental Requirements for Notch Toughness, Zone 2.
  2. For bearing details see Sheet No. 17.
  3. All steel for the steel beams, including splice plates, shall conform to the requirements of AASHTO M270 Grade 50. All diaphragms, including connection angles, shall conform to the requirements of AASHTO M270 Grade 36.
  4. For framing plan and beam elevation see Sheet No. 15.
  5. All cross frames or diaphragms shall be installed as steel is erected and secured with erection pins and bolts except as otherwise noted. Individual cross frames or diaphragms at supports may be temporarily disconnected to install bearing anchor rods.

STEEL DETAILS 1  
 IL ROUTE 92 (CENTENNIAL EXPRESSWAY)  
 OVER 7th AVENUE  
 FAP ROUTE 308 SEC. 1(HB)R  
 ROCK ISLAND COUNTY  
 STATION 1547+22.56  
 STRUCTURE NO. 081-0170

DESIGNED	JSD
CHECKED	AMK
DRAWN	OS
CHECKED	AMK

**LOCHNER**  
 H.W. LOCHNER, INC., CHICAGO, ILLINOIS

t:\2082\est-ue\tdgn\20440276E1.dgn