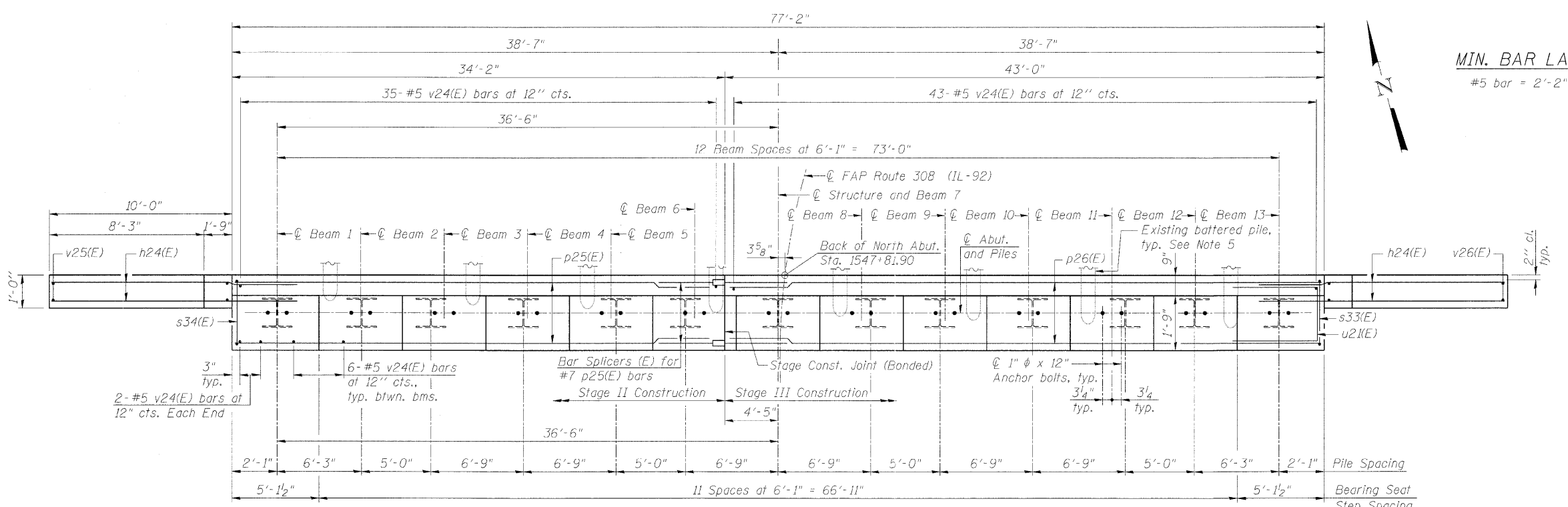
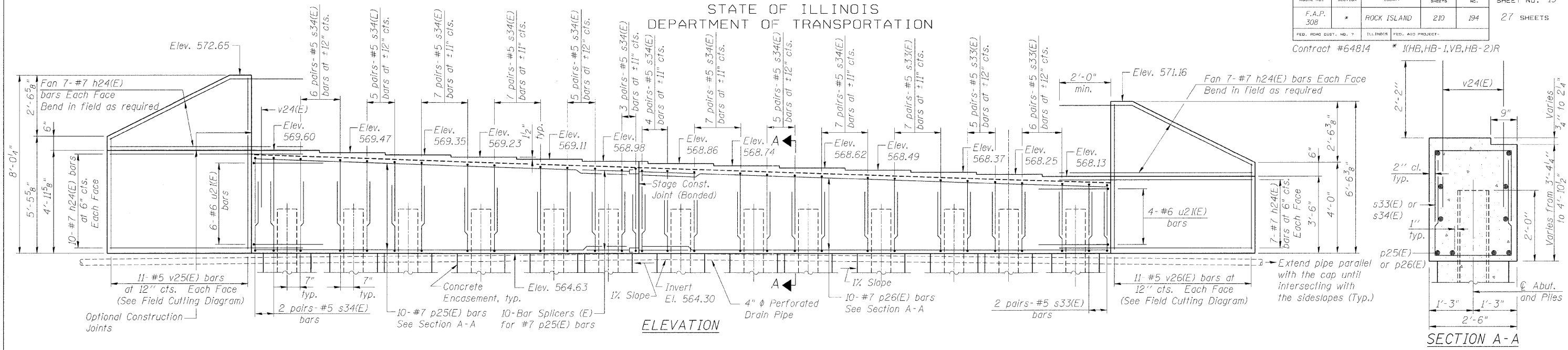


STATE OF ILLINOIS
DEPARTMENT OF TRANSPORTATION

ROUTE NO. F.A.P. 308	SECTION *	COUNTY ROCK ISLAND	SHEET NO. 210	SHEET 194	SHEET NO. 19 27 SHEETS
FED. ROAD DIST. NO. 7		ILLINOIS		FED. AID PROJECT	

Contract #64814 * (1HB, HB-1, VB, HB-2)R



BILL OF MATERIAL

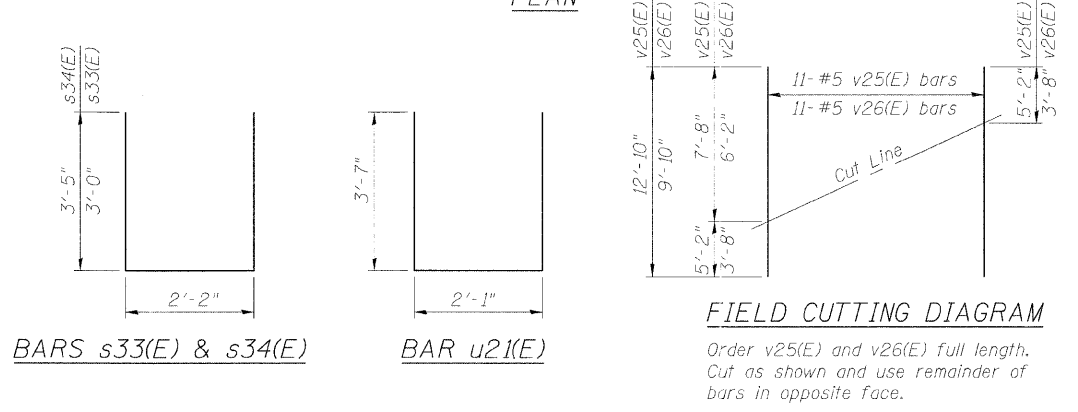
Bar	No.	Size	Length	Shape
h24(E)	62	#7	12'-0"	—
p25(E)	10	#7	33'-10"	—
p26(E)	10	#7	42'-8"	—
s33(E)	40	#5	8'-2"	□
s34(E)	116	#5	9'-0"	□
u2(E)	10	#6	9'-3"	□
v24(E)	154	#5	4'-4"	—
v25(E)	11	#5	12'-10"	—
v26(E)	11	#5	9'-10"	—
Porous Granular Embankment (Special)			Cu. Yd.	159
Structure Excavation			Cu. Yd.	67
Concrete Structures			Cu. Yd.	34.9
Reinforcement Bars, Epoxy Coated			Pound	5,610
Furnishing Steel Piles HP12x53			Foot	299
Driving Piles			Foot	299
Pile Shoes			Each	13
Concrete Encasement			Cu. Yd.	4.6
Geocomposite Wall Drain			Sq. Yd.	68
Pipe Underdrains for Structures 4"			Foot	112

PILE DATA

Type: Steel-HP12x53 with pile shoes
Nominal Required Bearing: 419 k
Allowable Resistance Available: 140 k
Est. Length: 23 ft
No. Production Piles: 13
No. Test Piles: 0

DESIGNED	AMK
CHECKED	JSD
DRAWN	OS
CHECKED	RWC

LOCHNER
H.W. LOCHNER, INC., CHICAGO, ILLINOIS



- NOTES**
- For details of Bar Splicers, see Sheet No. 23
 - For details of piles and Concrete Encasement, see Sheet No. 22
 - For abutment diaphragm details, see Sheet No. 9
 - For Section thru Abutment, see Sheet No. 18
 - The Contractor shall verify the locations of existing piles before driving new piles.
 - Excavation required for Concrete Encasements shall be included in the cost of Concrete Encasement.
 - Pour steps monolithically with cap.
 - For bearing details, see Sheet No. 17

NORTH ABUTMENT
IL ROUTE 92 (CENTENNIAL EXPRESSWAY)
OVER 7th AVENUE
FAP ROUTE 308 SEC. 1(HB)R
ROCK ISLAND COUNTY
STATION 1547+22.56
STRUCTURE NO. 081-0170

t:\2082\st-ue\tdgn\2044027NA1.dgn