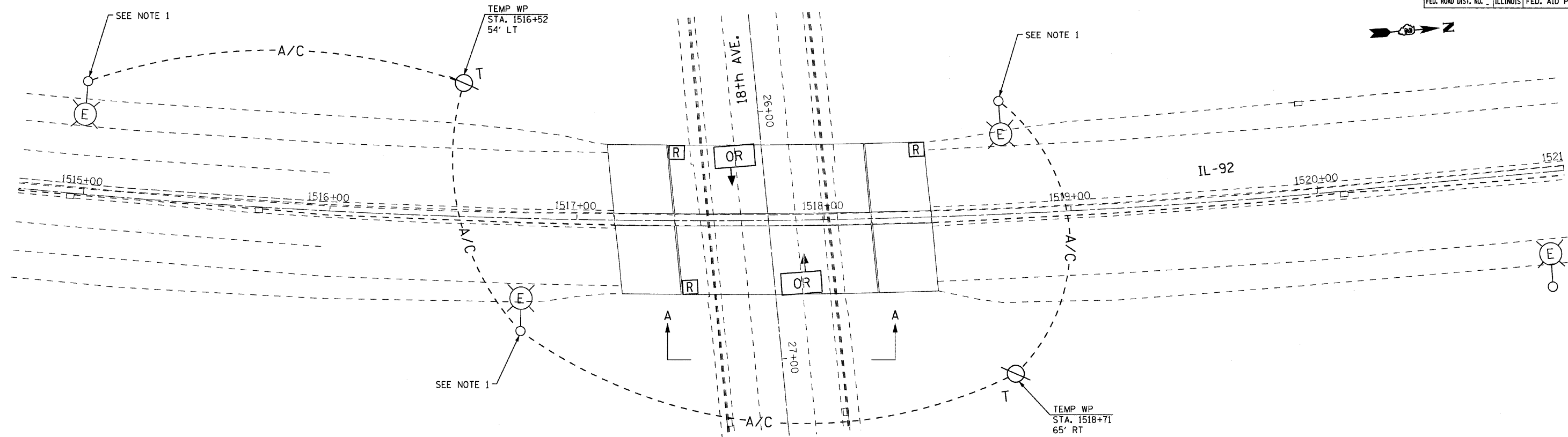


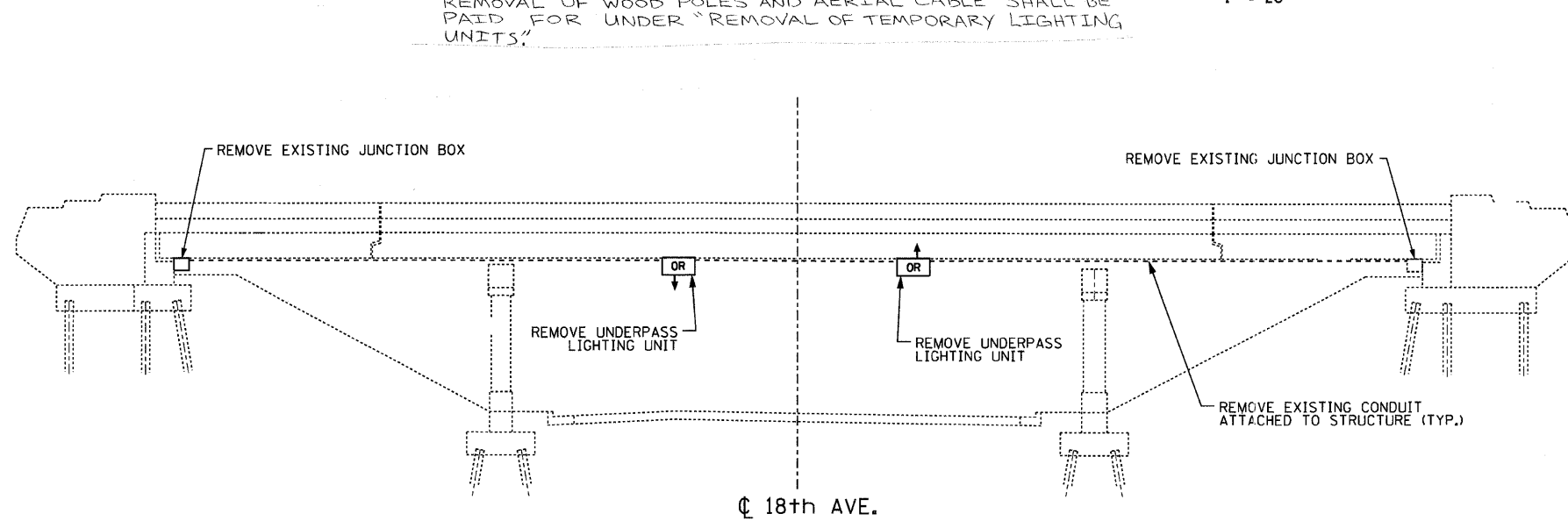
| | | | | |
|---------------------------|---------|---------------------------|--------------|-----------|
| F.A. RTE. | SECTION | COUNTY | TOTAL SHEETS | SHEET NO. |
| 308 | | ROCK ISLAND | 210 | 206 |
| STA. _____ | | TO STA. _____ | | |
| FED. ROAD DIST. NO. _____ | | ILLINOIS FED. AID PROJECT | | |



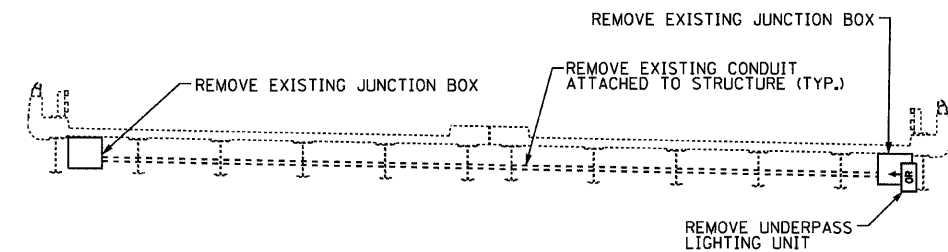
NOTES:

1. DISCONNECT AND ABANDON EXISTING CIRCUITRY TO UNDERPASS JUNCTION BOX.
2. TEMPORARY WOOD POLES AND AERIAL CABLE SHALL BE REMOVED AFTER PROPOSED CIRCUIT IS OPERATIONAL. REMOVAL OF WOOD POLES AND AERIAL CABLE SHALL BE PAID FOR UNDER "REMOVAL OF TEMPORARY LIGHTING UNITS."

PLAN
1" = 20'



SECTION A-A
LOOKING WEST
NOT TO SCALE



SECTION THROUGH BRIDGE
LOOKING SOUTH
NOT TO SCALE



| REVISIONS | |
|-----------|------|
| NAME | DATE |
| | |
| | |
| | |
| | |
| | |
| | |
| | |
| | |
| | |
| | |

ILLINOIS DEPARTMENT OF TRANSPORTATION
ILLINOIS ROUTE 92
TEMPORARY AND REMOVAL PLAN
18TH AVE.

SCALE: 1"=20'
DATE: 11/26/07
DRAWN BY: JDM
CHECKED BY: JH

PLOT DATE = #DATES
FILE NAME = #FILE#
USER NAME = #USER#