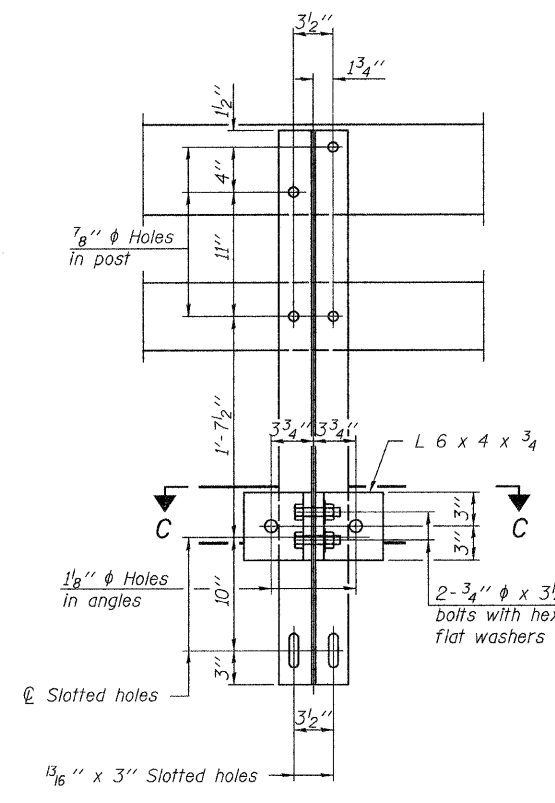
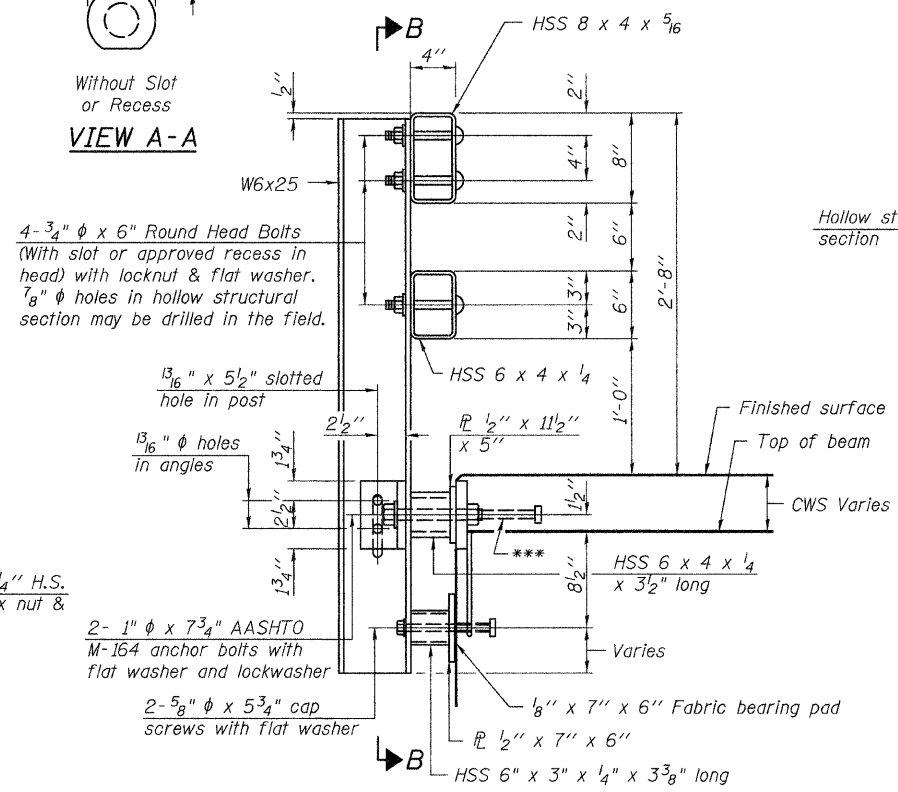


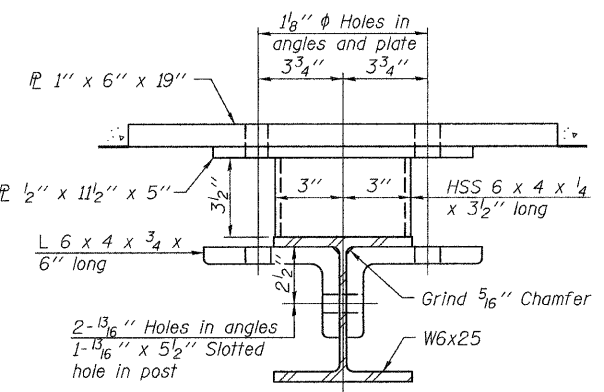
FOR RAIL POST SPACING SEE SH.#9 OF 16



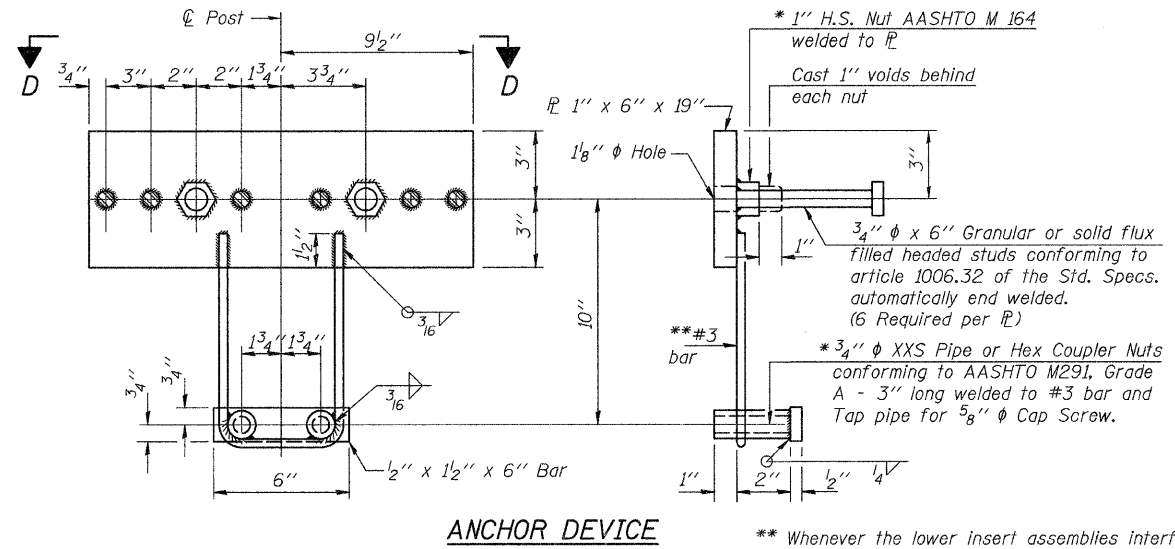
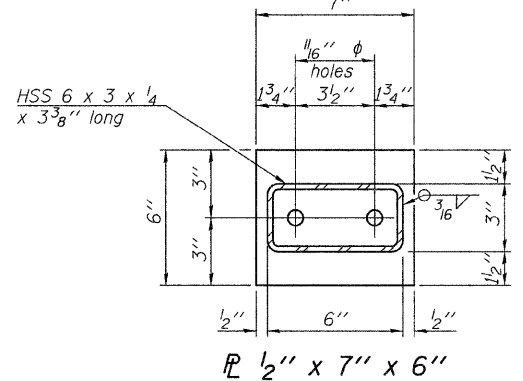
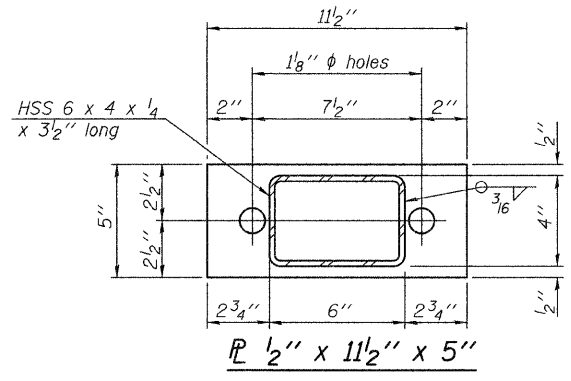
SECTION B-B



SECTION AT RAIL POST

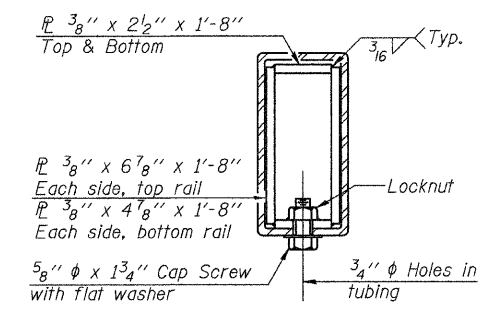


SECTION C-C

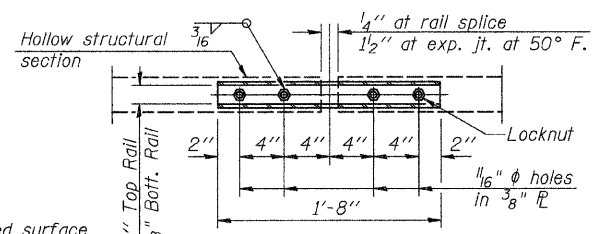


ANCHOR DEVICE

* Threaded areas shall be plugged or blocked off during casting of beam. Galvanized after fabrication.

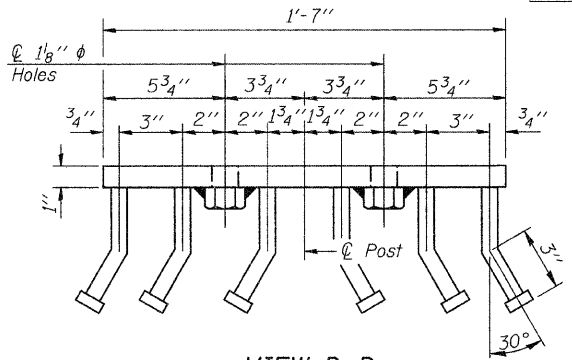


SECTION AT RAIL SPLICE

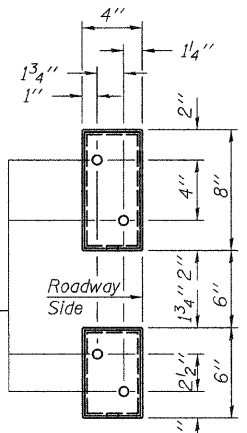


PLAN-BOTT. SPLICE TYPICAL

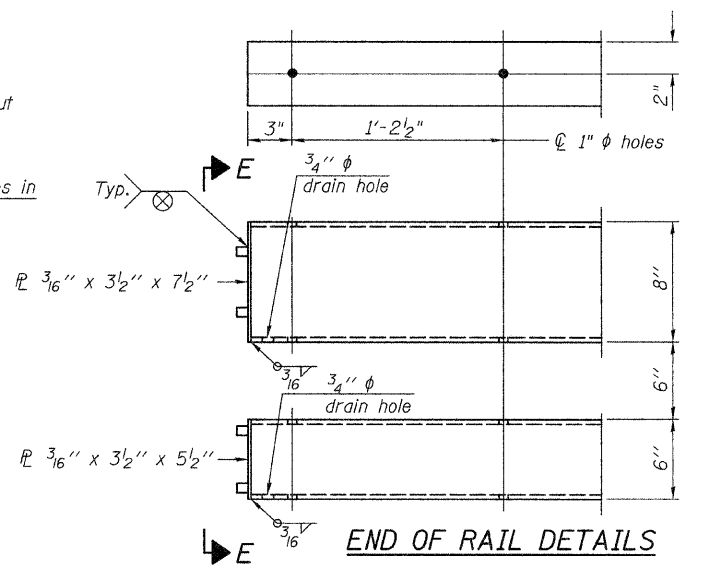
① - 5/8" reduced base welded studs. Provide 4 - 5/8" washers and self-locking nuts or nuts and jam nuts for guardrail connection shown on Std. 631032



VIEW D-D



VIEW E-E



END OF RAIL DETAILS

Notes:
 All field drilled holes shall be coated with an approved zinc rich paint before erection.
 For multi-span bridges, sufficient 1/4" x 6" x 1'-2" galvanized steel shims shall be provided to align rail between adjacent spans. Cost included with Steel Railing, Type SM.
 Steel rail elements shall be galvanized according to Article 509.05 of the Standard Specifications.
 *** The studs of the anchor devices shall be placed below the top reinforcement bars and the outermost longitudinal reinforcement bar shall be placed directly above the studs of the rail post anchor device.

BILL OF MATERIAL

Item	Unit	Quantity
Steel Railing, Type SM	Foot	269

STEEL RAILING, TYPE SM WITH CONCRETE WEARING SURFACE
F.A.S. 1247 (U.S. ROUTE 6)
OVER MUD CREEK
SECTION (6BR/D)
HENRY COUNTY
STATION 666+69.05
STR. NO. 037-0131

HUTCHISON ENGINEERING, INC.
 JACKSONVILLE, ILLINOIS
 Rev: _____ Date: _____

DESIGNED	BAN
CHECKED	JEH
DRAWN	TC/TD
CHECKED	BAN