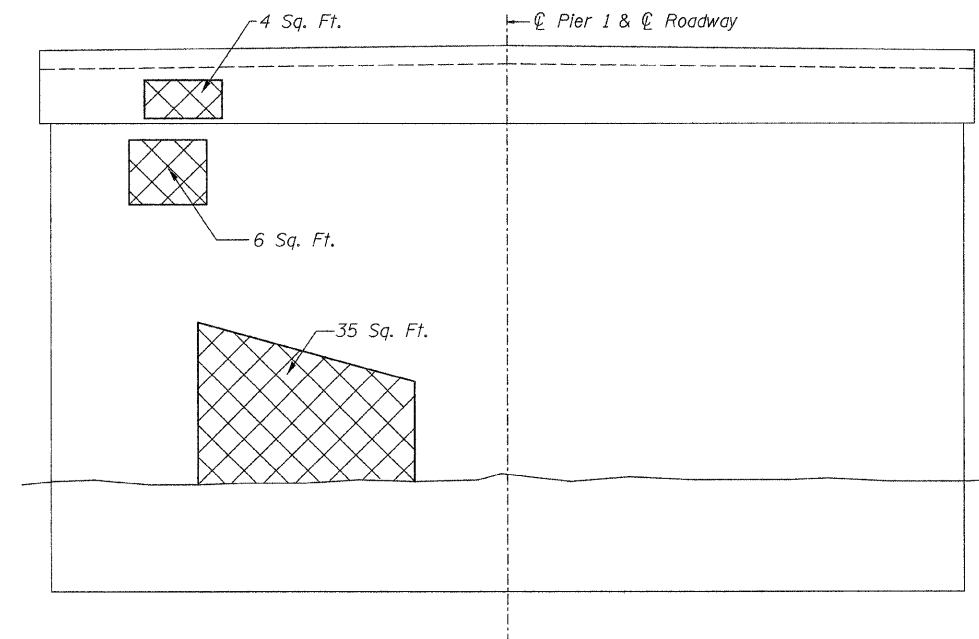


ROUTE NO.	SEC	COUNTY	TOTAL SHEETS	SHEET NO.
FAS 1247	*	HENRY	80	42
FED. ROAD DIST. NO. 7	ILLINOIS	PROJECT		

SHEET NO. 12
of 16 SHEETS

* (6BR/D) CONTRACT NO. 64D10



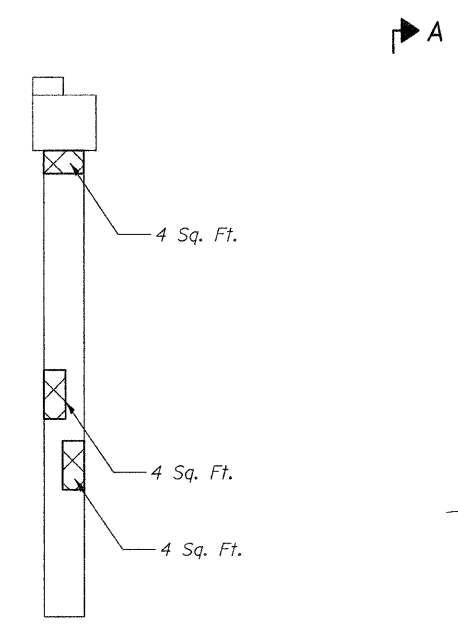
WEST FACE
(Looking East)

BILL OF MATERIAL

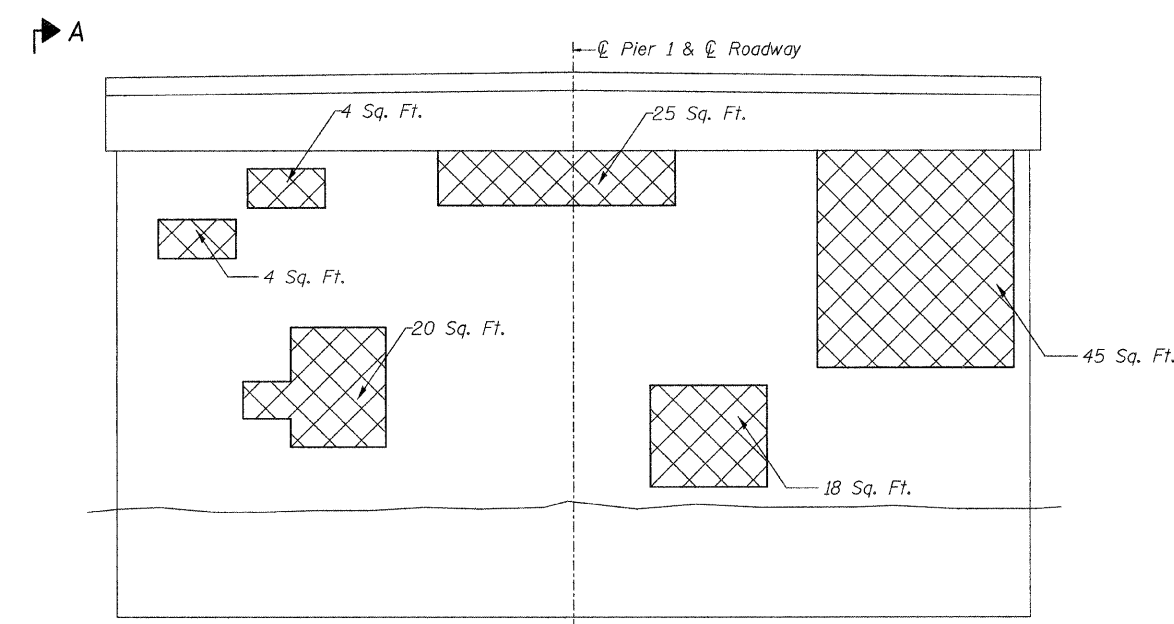
Item	Unit	Quantity
Structural Repair of Concrete (Depth equal to or less than 5")	Sq. Ft.	173

LEGEND

Structural Repair of Concrete (Depth equal to or less than 5")



VIEW A-A



EAST FACE
(Looking West)

DESIGNED	BAN
CHECKED	JEH
DRAWN	TC/TD
CHECKED	BAN

PIER 1 REPAIRS
F.A.S. 1247 (U.S. ROUTE 6)
OVER MUD CREEK
SECTION (6BR/D)
HENRY COUNTY
STATION 666+69.05
STR. NO. 037-0131

HUTCHISON ENGINEERING, INC.
 JACKSONVILLE, ILLINOIS

Rev: _____ Date: _____