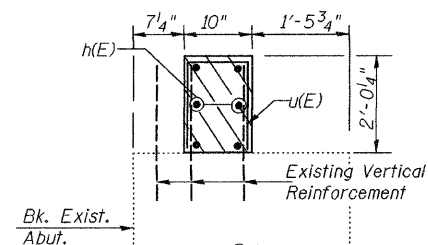
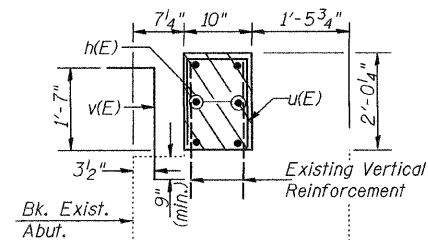


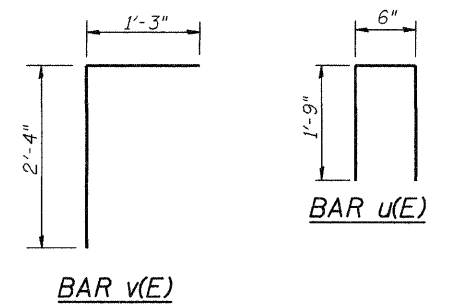
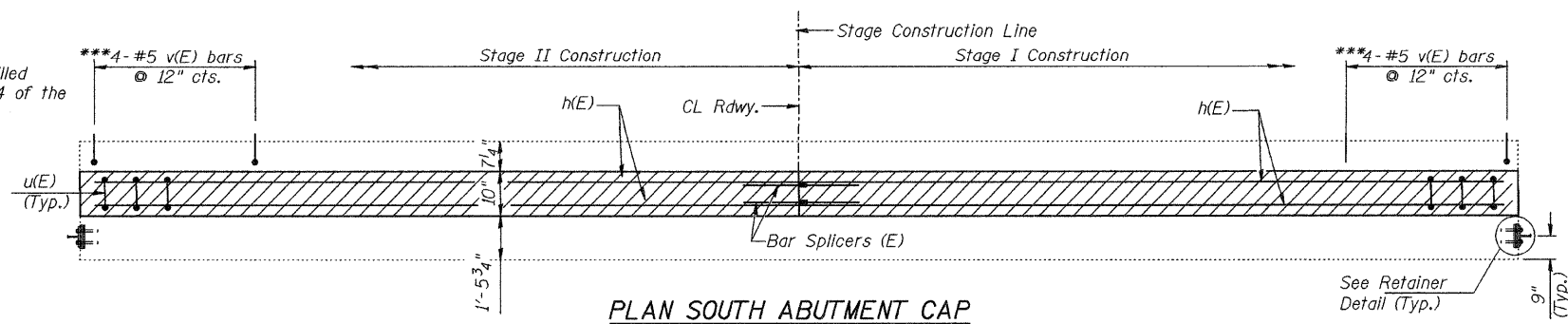
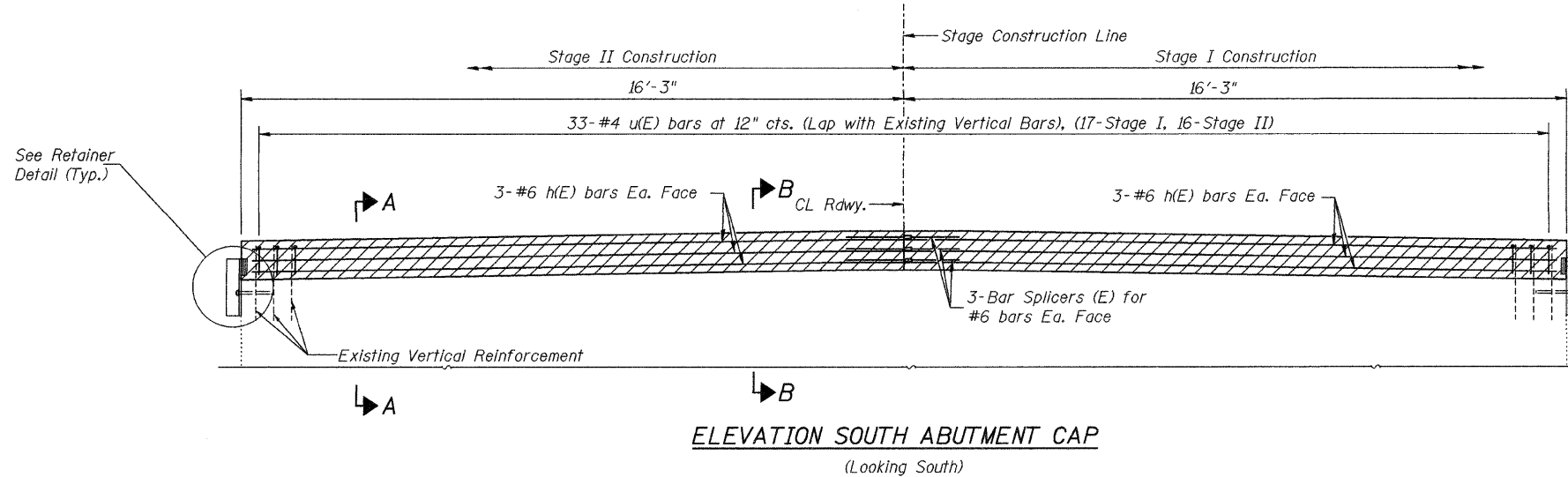
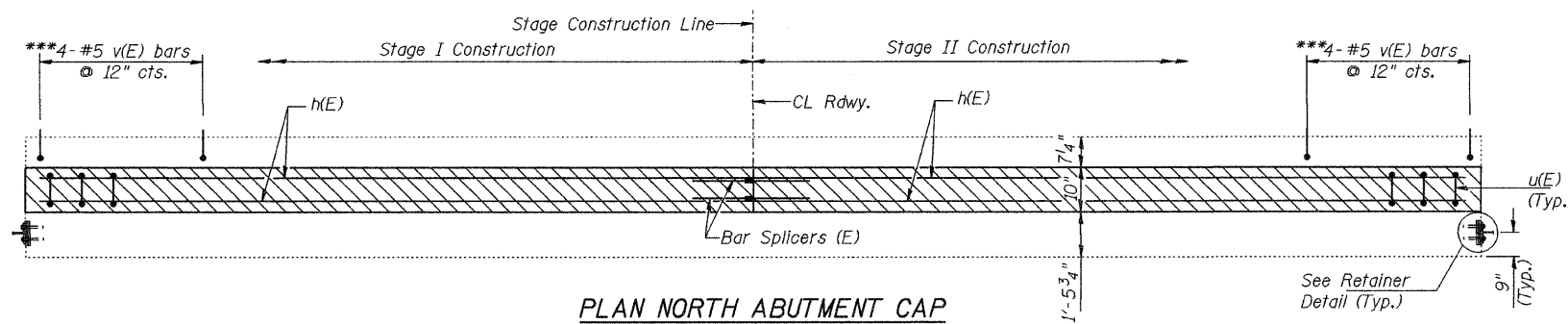
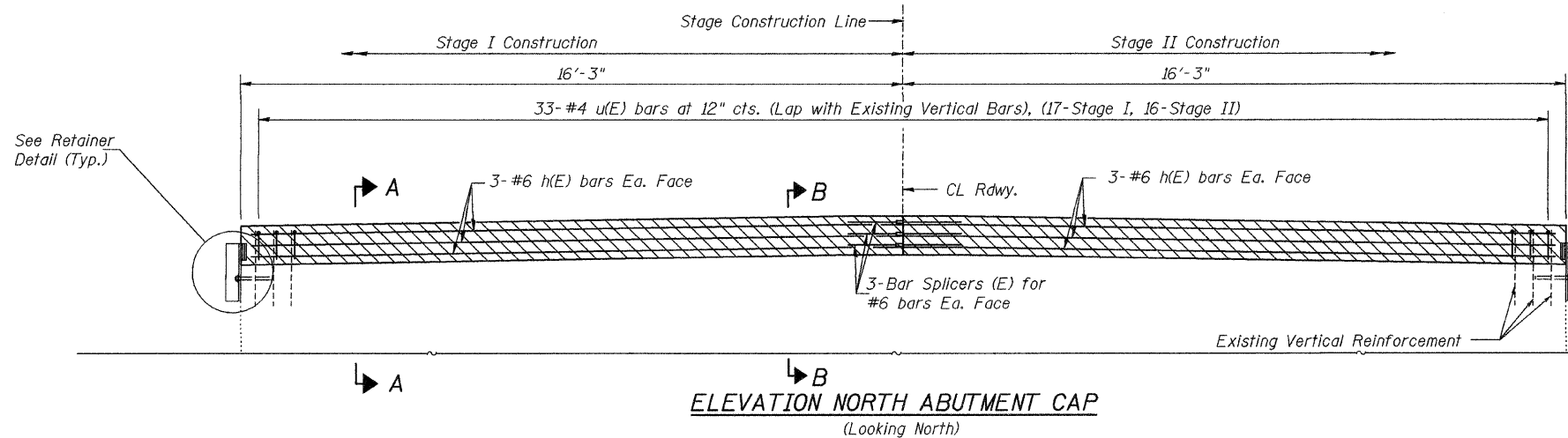
* Anchor bolts will be approved threaded rod placed in drilled holes and grouted in place. Cost of retainer and accessories are included with Precast Prestressed Concrete Deck Beams.

** Remove steel wedges after Concrete Wearing Surface has cured.



***Epoxy Grout v(E) bars into drilled holes according to Section 584 of the Standard Specifications.

DESIGNED	BAN
CHECKED	JOH
DRAWN	TD
CHECKED	BAN



MIN. BAR LAP
#4 = 1'-4"

BILL OF MATERIAL

Bar	No.	Size	Length	Shape
h(E)	24	#6	16'-0"	—
u(E)	66	#4	4'-0"	□
v(E)	16	#5	3'-7"	┌
Concrete Structures			Cu. Yd.	4.1
Reinforcement Bars, Epoxy Coated			Pound	810
Bar Splicers			Each	12

Notes:

Existing reinforcement bars extending into new construction shall be cleaned, straightened and incorporated into the new construction. Cost to be included with Concrete Removal.

Hatched area shall be poured after Concrete Wearing surface on PPC Deck Beams is in place and cured.

Anchor bolts shall be ASTM F1554 all-thread (or an Engineer-approved alternate material) of the grade(s) and diameter(s) specified. ASTM A307 Grade C anchor bolts may be used in lieu of ASTM F1554 Grade 36 (Fy=36ksi). The corresponding specified grade of AASHTO M314 anchor bolts may be used in lieu of ASTM F1554.

Drilled and set anchor bolts shall be installed according to Article 521.06 of the Standard Specifications.

ABUTMENT DETAILS
FAP 22 (ILLINOIS ROUTE 78)
OVER GREEN RIVER
SEC. (125BR-11D)
HENRY COUNTY
STATION 882+67.79
STR. NO. 037-0129

HUTCHISON ENGINEERING, INC.
JACKSONVILLE, ILLINOIS

Rev: _____ Date: _____