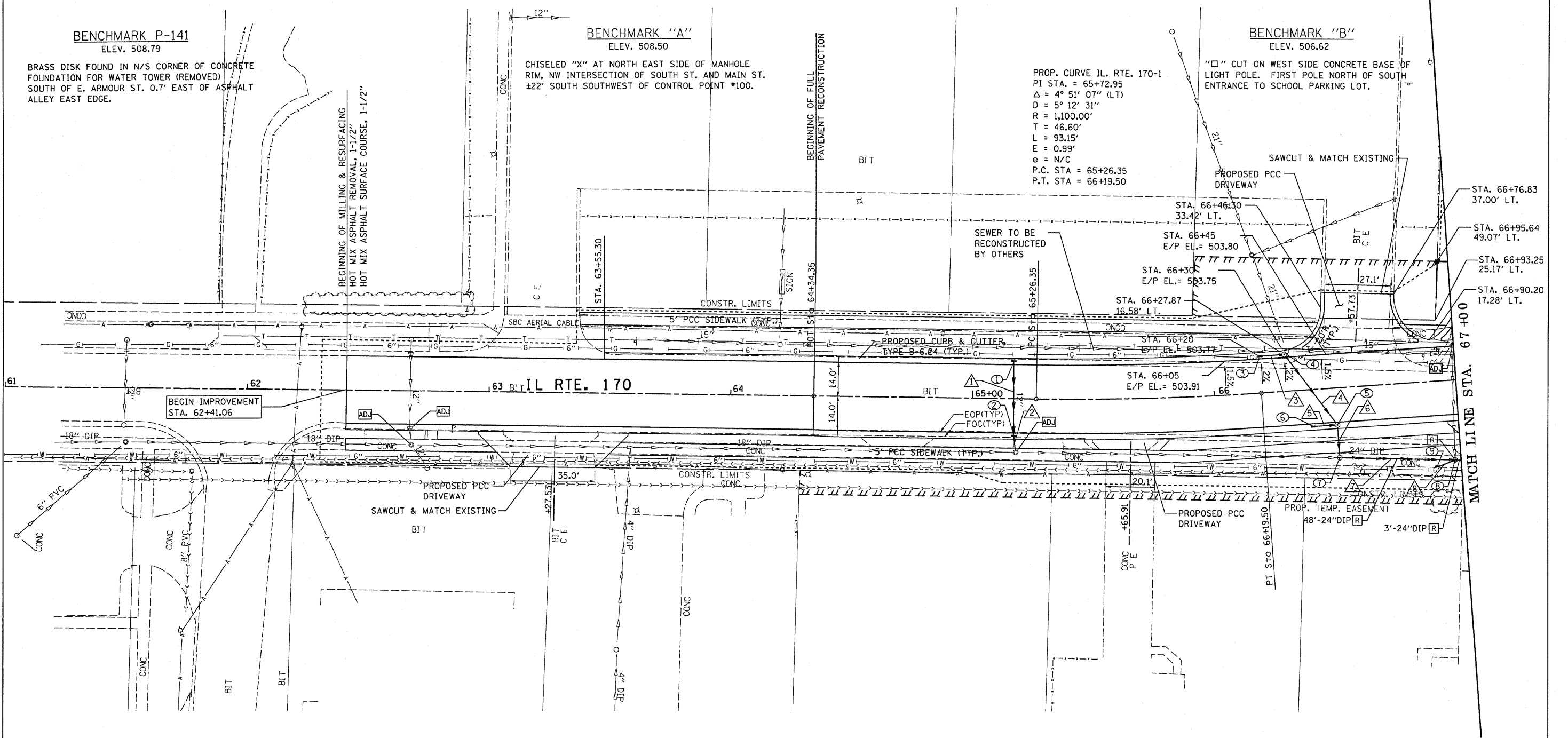
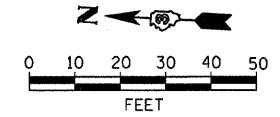


F.A.P. RTE.	SECTION	COUNTY	TOTAL SHEETS	SHEET NO.
786	(109) BR	LASALLE	351	28
STA. 61+50		TO STA. 67+00		
FED. ROAD DIST. NO.		ILLINOIS	FED. AID PROJECT	



PROP. CURVE IL. RTE. 170-1
 PI STA. = 65+72.95
 $\Delta = 4^\circ 51' 07''$ (LT)
 $D = 5^\circ 12' 31''$
 $R = 1,100.00'$
 $T = 46.60'$
 $L = 93.15'$
 $E = 0.99'$
 $e = N/C$
 P.C. STA = 65+26.35
 P.T. STA = 66+19.50

- ① STA. 65+17, 16' LT. INLET, TYPE A TYPE 3 F&G RIM = 504.73 S. INV = 502.09
- ② STA. 65+17, 16' LT. INLET, TYPE B TYPE 3 F&G RIM = 504.73 E. INV = 501.80 W. INV = 501.80
- ③ STA. 66+20, 16' LT. INLET, TYPE A TYPE 3 F&G RIM = 503.65 S. INV = 500.65
- ④ STA. 66+30, 16' LT. MH. TYPE A, 5' DIA. TYPE 3 F&G RIM = 503.63 N. INV = 500.59 N. INV. (15'') = 497.00 W. INV = 496.13 NE. INV. = 496.98
- ⑤ STA. 66+50, 16' RT. MH. TYPE A, 4' DIA. TYPE 3 F&G RIM = 503.68 N. INV = 500.62 E. INV = 496.02 W. INV = 495.92
- ⑥ STA. 66+45, 16' RT. INLET, TYPE A TYPE 3 F&G RIM = 503.68 S. INV = 500.68
- ⑦ STA. 66+50, 28.7' RT. MH. TYPE A, 5' DIA. TYPE 1 FRAME, C.L. RIM = 504.00 N. INV. = 499.68± (EXIST.) S. INV. = 494.95 E. INV. = 495.55
- ⑧ STA. 66+90, 35.0' RT. INLET, TYPE A TYPE 8 GRATE RIM = 502.50 INV = 501.08
- ⑨ STA. 66+97.5, 32.8' RT. MH. TYPE A, 5' DIA. TYPE 1 FRAME, C.L. RIM = 503.17 N. INV. = 494.53 S. INV. = 494.43 NW. INV. = 501.05

- ① 29', 12" SS, TYPE 1 @ 1%, TBF = 0.1 CY
- ② 4', 12" SS, TYPE 1 @ 1%, TBF = 0.1 CY
- ③ 6', 12" SS, TYPE 1 @ 1%, TBF = 0.4 CY
- ④ 31', 24" SS, TYPE 2 @ 0.35%, TBF = 28.7 CY
- ⑤ 6', 12" SS, TYPE 1 @ 1%, TBF = 0.4 CY
- ⑥ 8', 24" SS, TYPE 2 @ 0.45%, TBF = 8.9 CY
- ⑦ 42', 30" SS WATER MAIN, @ 1%, TBF = 0 CY
- ⑧ 4', 12" SS WATER MAIN, @ 1%, TBF = 0 CY

REVISIONS	
NAME	DATE
100T	10-30-07

ILLINOIS DEPARTMENT OF TRANSPORTATION
ROADWAY PLAN & PROFILE, DRAINAGE AND UTILITIES
 STA. 61+50 TO STA. 67+00
 SCALE: 1" = 20'
 DATE: OCTOBER, 2007
 DRAWN BY: CJO
 CHECKED BY: JCL

PLOT DATE = Nov. 02, 2007 - 08:31:53 AM
 FILE NAME = c:\ytc\access\p95782\consult\phase 2\ah1081.dgn
 PLOT SCALE = 28.8000 / IN.
 USER NAME = schwenkerg