



F.A.P. RTE.	SECTION	COUNTY	TOTAL SHEETS	SHEET NO.
786	(109) BR	LASALLE	351	33
STA. 72+50		TO STA. 78+00		
FED. ROAD DIST. NO.	ILLINOIS	FED. AID PROJECT		

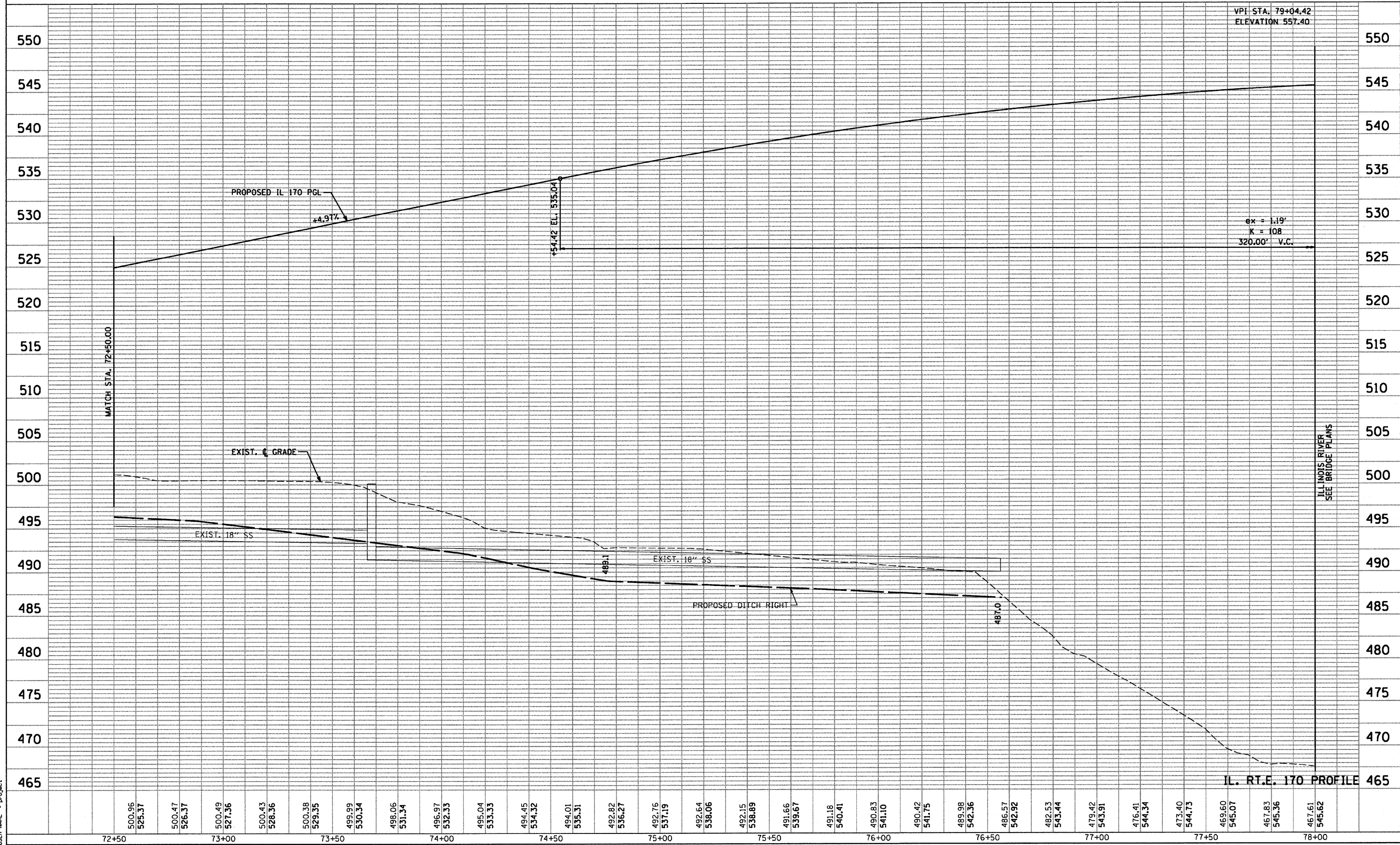
SCALE: HORIZ. 1" = 20'
VERT. 1" = 5'

IL RT.E. 170

PLAN	SURVEYED	DATE
NOTE BOOK NO.	BY	

PROFILE	SURVEYED	DATE
NOTE BOOK NO.	BY	

PLOT DATE = 10/12/2007
FILE NAME = #FILEL9
PLOT SCALE = #SCALE#
USER NAME = #project



ILLINOIS RIVER
SEE BRIDGE PLANS

IL RT.E. 170 PROFILE