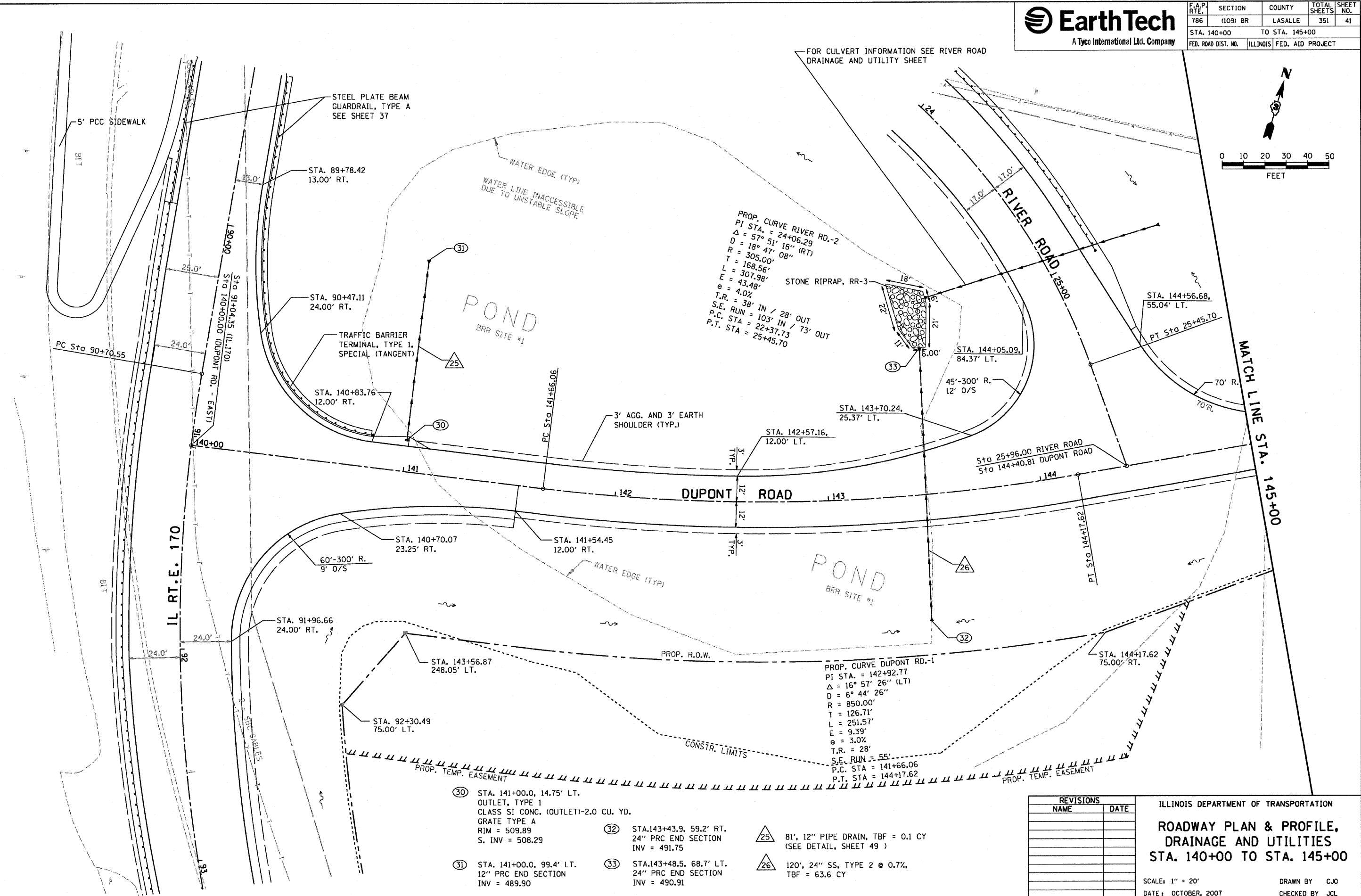
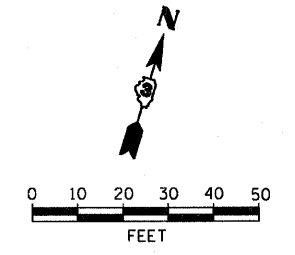




F.A.P. RTE.	SECTION	COUNTY	TOTAL SHEETS	SHEET NO.
786	(109) BR	LASALLE	351	41
STA. 140+00		TO STA. 145+00		
FED. ROAD DIST. NO.	ILLINOIS	FED. AID PROJECT		



- 30 STA. 141+00.0, 14.75' LT. OUTLET, TYPE 1 CLASS SI CONC. (OUTLET)-2.0 CU. YD. GRATE TYPE A RIM = 509.89 S. INV = 508.29
- 31 STA. 141+00.0, 99.4' LT. 12" PRC END SECTION INV = 489.90
- 32 STA. 143+43.9, 59.2' RT. 24" PRC END SECTION INV = 491.75
- 33 STA. 143+48.5, 68.7' LT. 24" PRC END SECTION INV = 490.91

- 25 81', 12" PIPE DRAIN, TBF = 0.1 CY (SEE DETAIL, SHEET 49)
- 26 120', 24" SS, TYPE 2 @ 0.7%, TBF = 63.6 CY

REVISIONS	
NAME	DATE

ILLINOIS DEPARTMENT OF TRANSPORTATION
**ROADWAY PLAN & PROFILE,
 DRAINAGE AND UTILITIES**
STA. 140+00 TO STA. 145+00

SCALE: 1" = 20'
 DATE: OCTOBER, 2007

DRAWN BY: CJO
 CHECKED BY: JCL

PLOT DATE = 10/17/2007
 PLOT SCALE = 1" = 20'
 USER NAME = PROJECT