



F.A.P. RTE.	SECTION	COUNTY	TOTAL SHEETS	SHEET NO.
786	(109) BR	LASALLE	351	47
STA. 15+50		TO STA. 21+00		
FED. ROAD DIST. NO.		ILLINOIS FED. AID PROJECT		

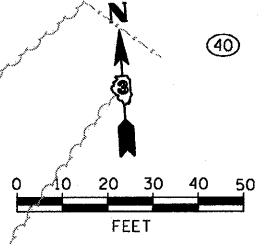
(38) STA. 20+00.0, 36.0' RT. INLET, TYPE A TYPE B GRATE RIM = 497.30 SW. INV = 494.70

(39) STA. 19+68.9, 60.8' RT. 12" END SECTION INV = 493.90
 (40) STA. 19+13.0, 50.0' RT. 15" END SECTION INV = 492.60

(41) STA. 18+63.1, 50.0' RT. 15" END SECTION INV = 491.60
 (42) STA. 19+62.7, 51.4' LT. 42" PRC END SECTION INV = 488.81

(29) 40', 12" PIPE CULV., CL. D., @ 2.0% TBF = 5.4 CY
 (31) 169', 42" SS, TYPE 2, @ 0.2%, TBF = 117.0 CY
 (30) 52', 15" PIPE CULV., CL. D., @ 1.9%, TBF = 19.2 CY

PROP. CURVE RIVER RD.-1
 PI STA. = 19+68.52
 $\Delta = 10^\circ 25' 55''$ (LT)
 $D = 4^\circ 46' 29''$
 $R = 1,200.00'$
 $T = 109.54'$
 $L = 218.48'$
 $E = 4.99'$
 $e = 2.9\%$
 $T.R. = 29'$
 $S.E. RUN = 56'$
 $P.C. STA = 18+58.97$
 $P.T. STA = 20+77.46$



DATE	BY

DATE	BY

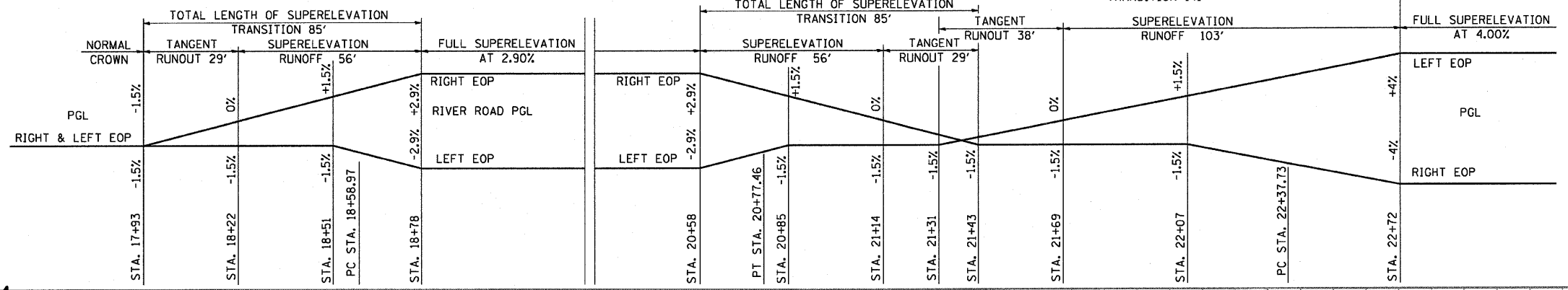
DATE	BY

DATE	BY

DATE	BY

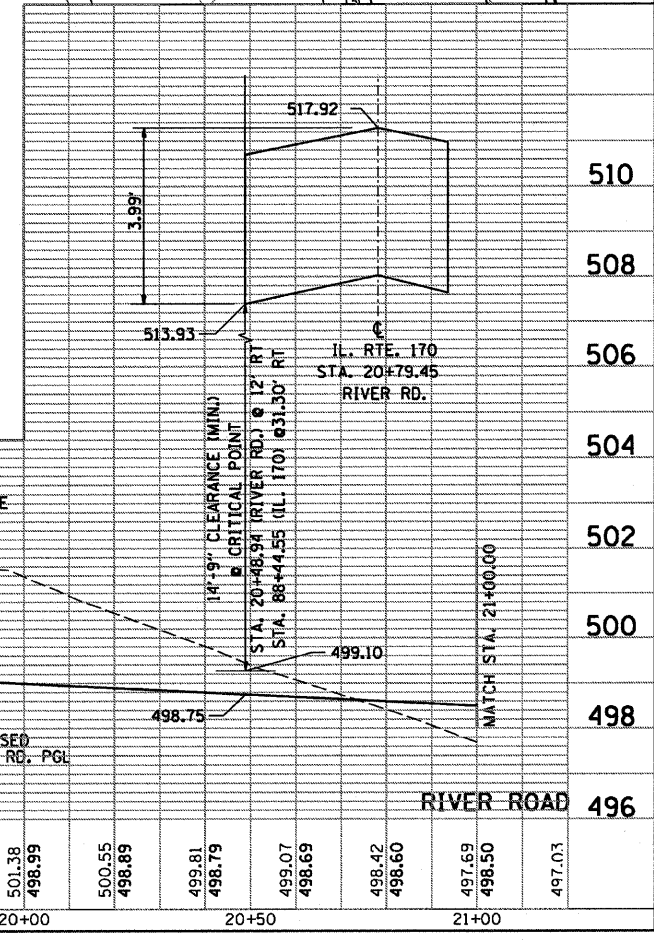
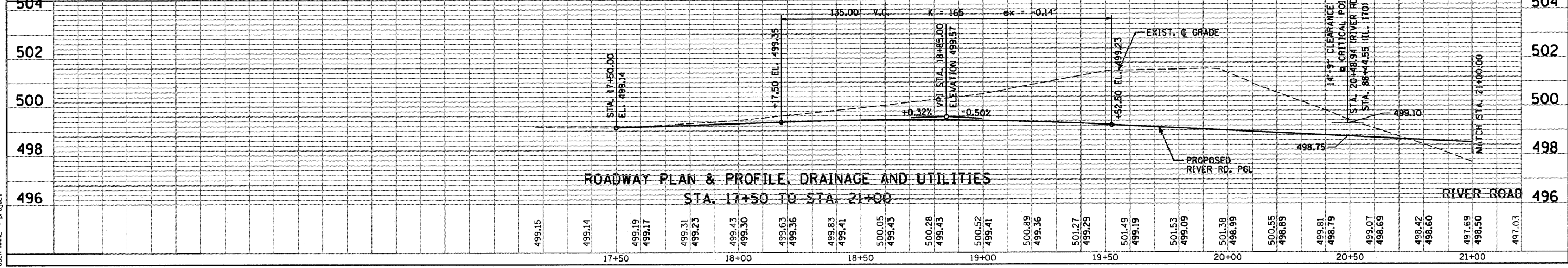
SCALE: HORIZ. 1" = 20'
 VERT. 1" = 2'

SUPERELEVATION TRANSITION DIAGRAM



ROADWAY PLAN & PROFILE, DRAINAGE AND UTILITIES

STA. 17+50 TO STA. 21+00



PLOT DATE = 10/11/2007
 FILE NAME = #FILE#
 PLOT SCALE = #SCALE#
 USER NAME = #PROJECT#

MATCH LINE STA. 21+00