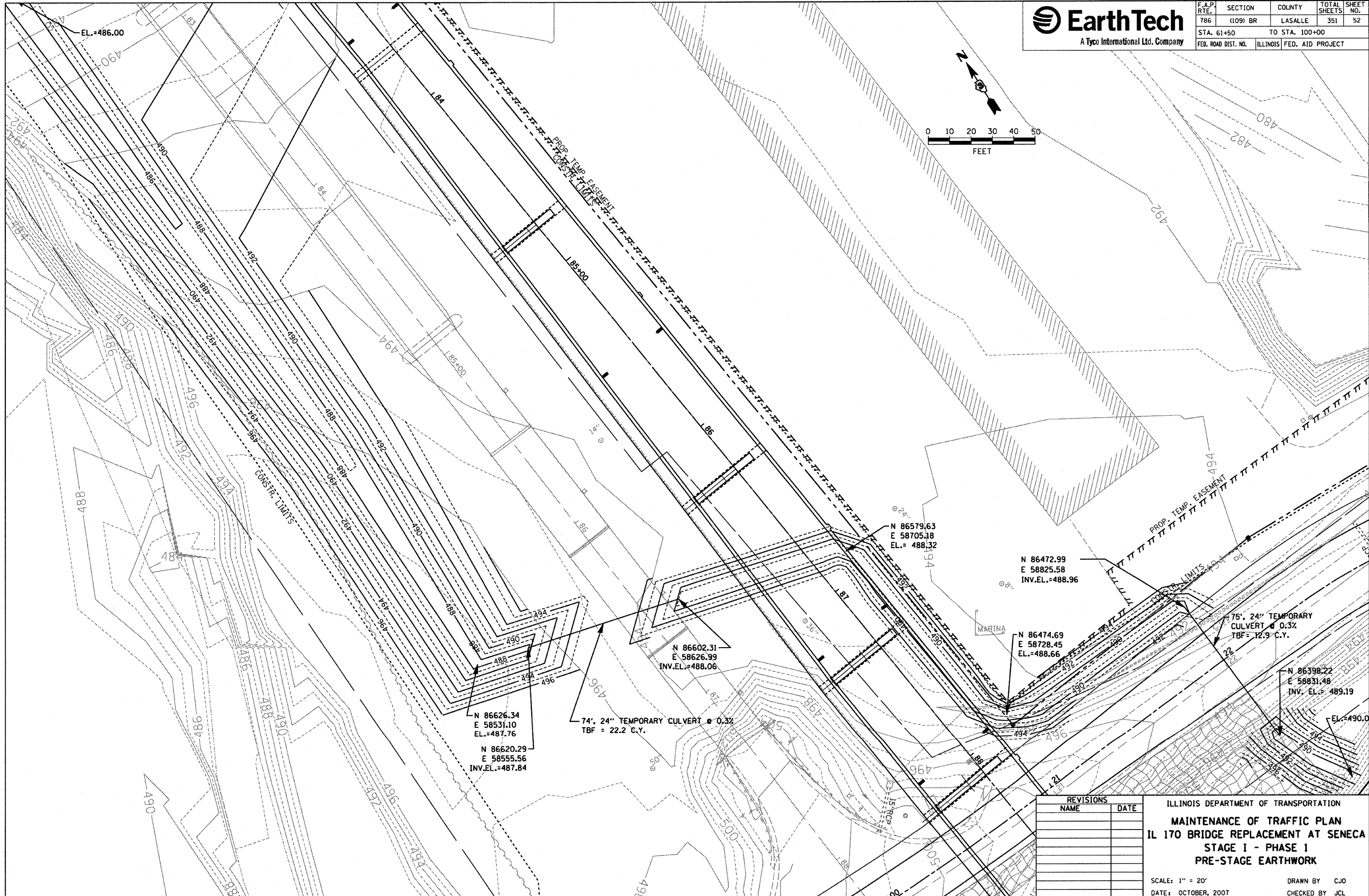
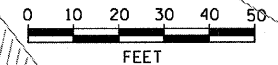
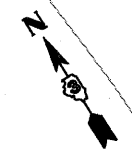




F.A.P. RTE.	SECTION	COUNTY	TOTAL SHEETS	SHEET NO.
786	(109) BR	LASALLE	351	52
STA. 61+50		TO STA. 100+00		
FED. ROAD DIST. NO.	ILLINOIS	FED. AID PROJECT		



N 86626.34
E 58531.10
EL.=487.76

N 86620.29
E 58555.56
INV.EL.=487.84

74', 24" TEMPORARY CULVERT @ 0.3%
TBF = 22.2 C.Y.

N 86602.31
E 58626.99
INV.EL.=488.06

N 86579.63
E 58705.18
EL.= 488.32

N 86472.99
E 58825.58
INV.EL.=488.96

N 86474.69
E 58728.45
EL.=488.66

N 86398.22
E 58831.48
INV. EL.= 489.19

REVISIONS	
NAME	DATE

ILLINOIS DEPARTMENT OF TRANSPORTATION
MAINTENANCE OF TRAFFIC PLAN
IL 170 BRIDGE REPLACEMENT AT SENECA
STAGE I - PHASE I
PRE-STAGE EARTHWORK

SCALE: 1" = 20'
 DATE: OCTOBER, 2007
 DRAWN BY: CJO
 CHECKED BY: JCL

PLOT DATE = 10/14/2007
 FILE NAME = MFILES
 PLOT SCALE = #SCALE#
 USER NAME = PROJECT