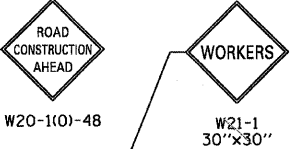
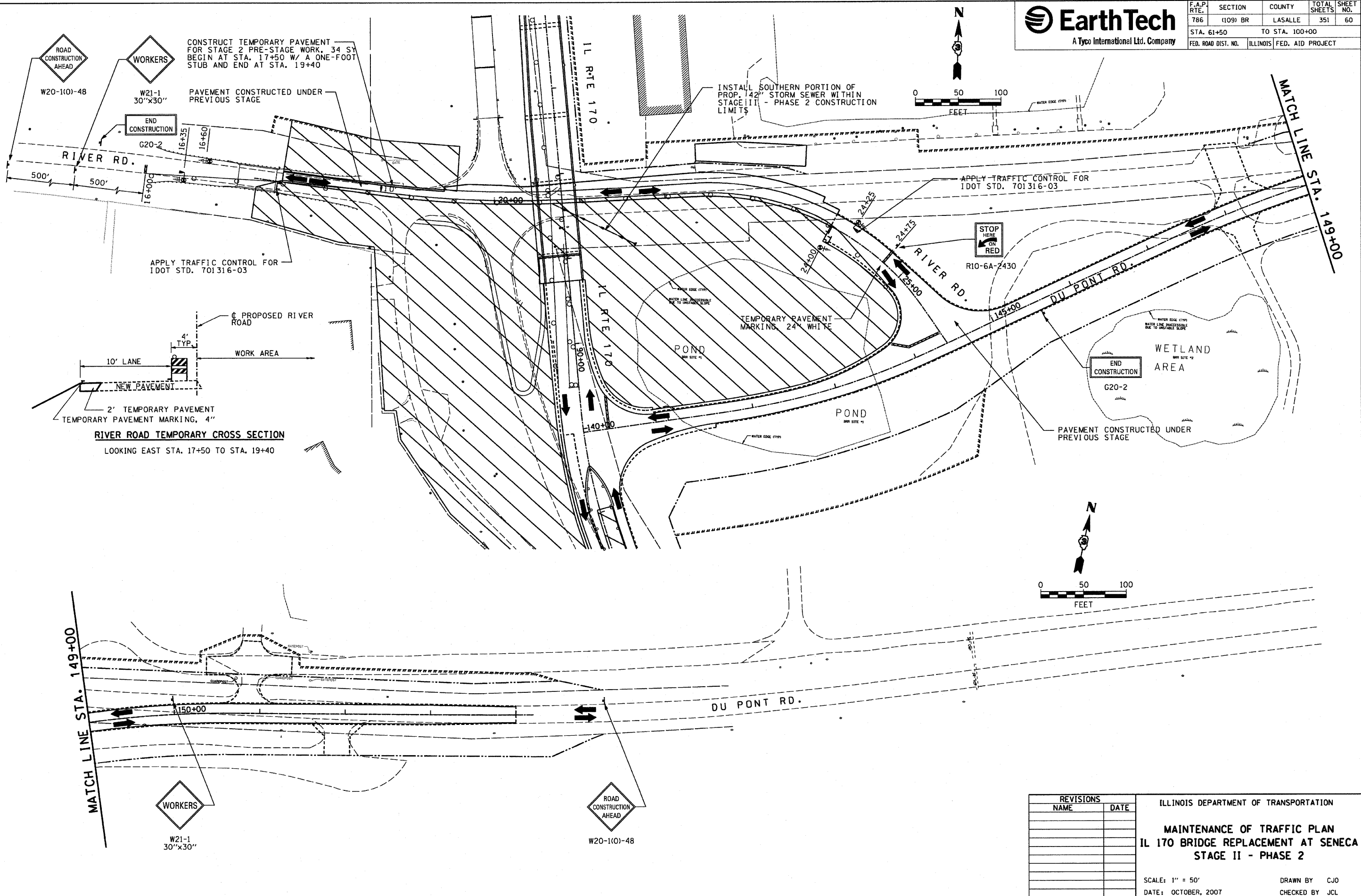


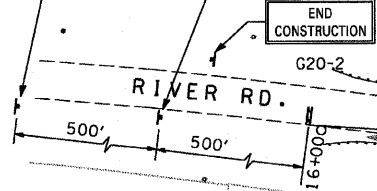


F.A.P. RTE.	SECTION	COUNTY	TOTAL SHEETS	SHEET NO.
786	(109) BR	LASALLE	351	60
STA. 61+50		TO STA. 100+00		
FED. ROAD DIST. NO.	ILLINOIS	FED. AID PROJECT		

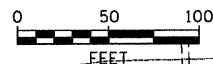


CONSTRUCT TEMPORARY PAVEMENT FOR STAGE 2 PRE-STAGE WORK. 34 SY BEGIN AT STA. 17+50 W/ A ONE-FOOT STUB AND END AT STA. 19+40

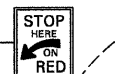
PAVEMENT CONSTRUCTED UNDER PREVIOUS STAGE



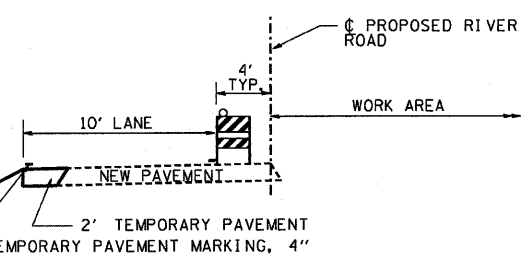
INSTALL SOUTHERN PORTION OF PROP. 142" STORM SEWER WITHIN STAGE III - PHASE 2 CONSTRUCTION LIMITS



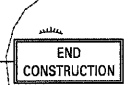
APPLY TRAFFIC CONTROL FOR IDOT STD. 701316-03



APPLY TRAFFIC CONTROL FOR IDOT STD. 701316-03

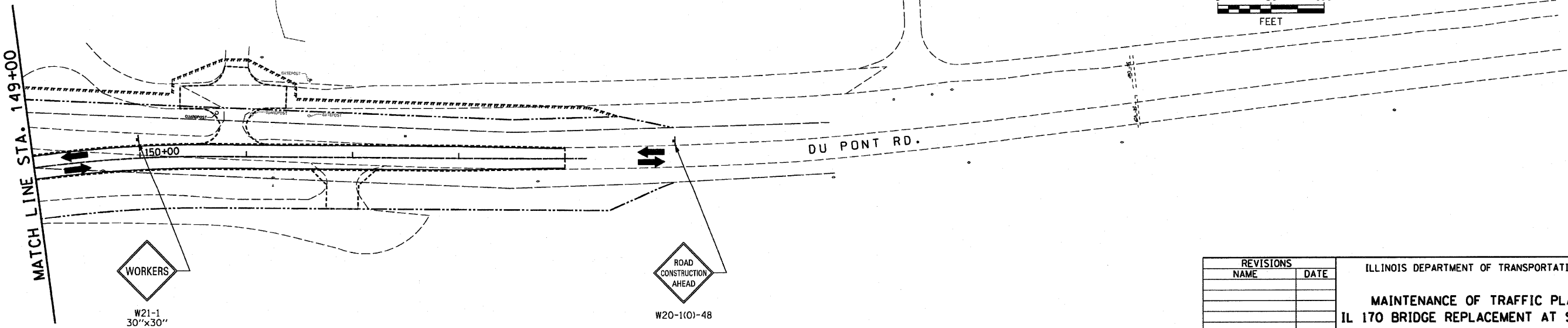
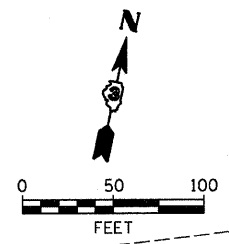


RIVER ROAD TEMPORARY CROSS SECTION
LOOKING EAST STA. 17+50 TO STA. 19+40



WETLAND AREA

PAVEMENT CONSTRUCTED UNDER PREVIOUS STAGE



PLOT DATE = 10/17/2007
PLOT SCALE = 1"=50'
USER NAME = project

REVISIONS	
NAME	DATE

ILLINOIS DEPARTMENT OF TRANSPORTATION
MAINTENANCE OF TRAFFIC PLAN
IL 170 BRIDGE REPLACEMENT AT SENECA
STAGE II - PHASE 2
SCALE: 1" = 50'
DATE: OCTOBER, 2007
DRAWN BY: CJO
CHECKED BY: JCL