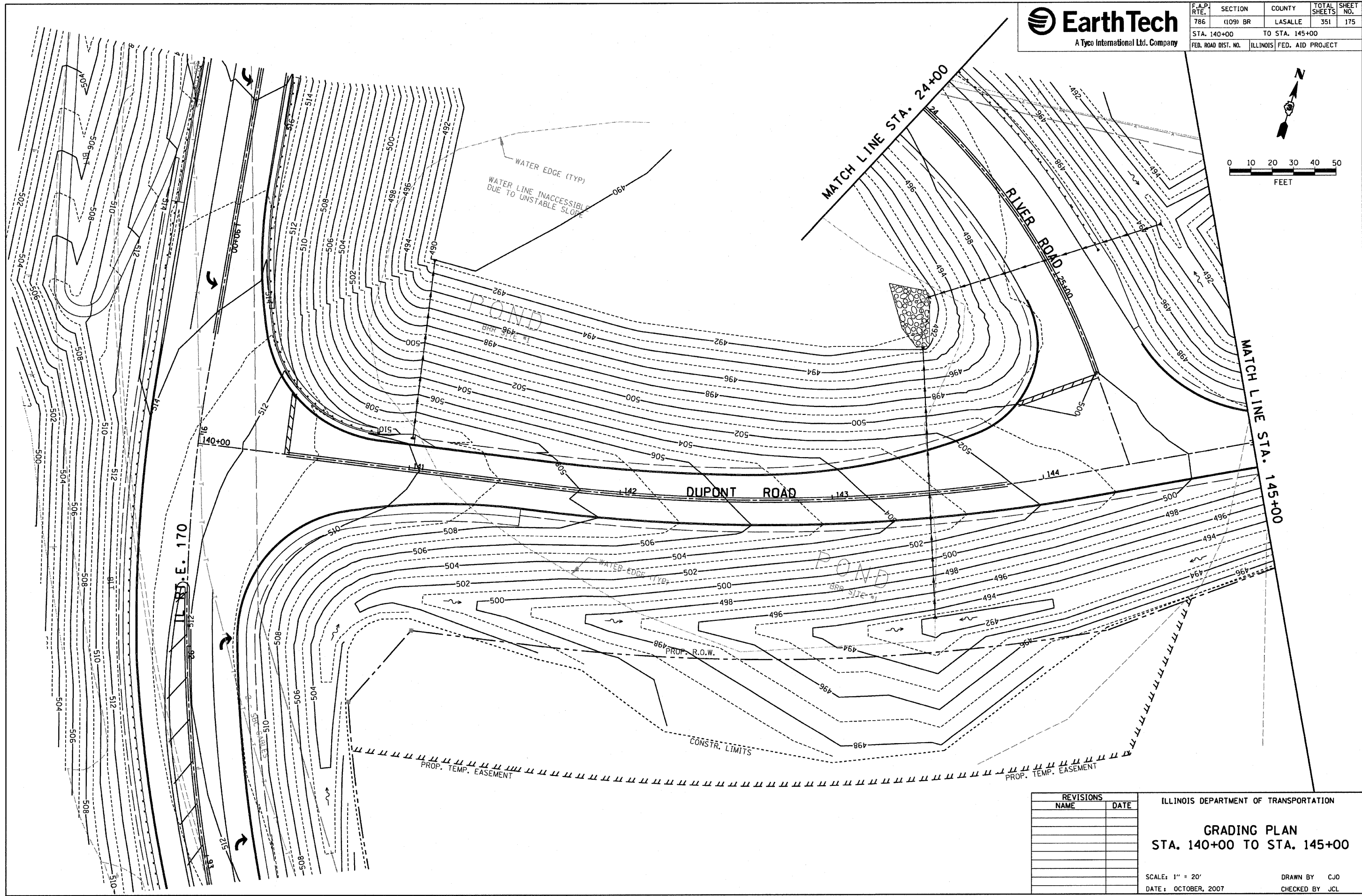
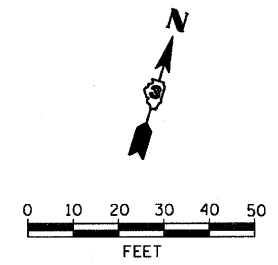




F.A.P. RTE.	SECTION	COUNTY	TOTAL SHEETS	SHEET NO.
786	(109) BR	LASALLE	351	175
STA. 140+00		TO STA. 145+00		
FED. ROAD DIST. NO.	ILLINOIS	FED. AID PROJECT		



PLOT DATE = 10/17/2007
 PLOT SCALE = 1" = 20'
 USER NAME = project

REVISIONS	
NAME	DATE

ILLINOIS DEPARTMENT OF TRANSPORTATION

GRADING PLAN
STA. 140+00 TO STA. 145+00

SCALE: 1" = 20'
 DATE: OCTOBER, 2007

DRAWN BY: CJO
 CHECKED BY: JCL