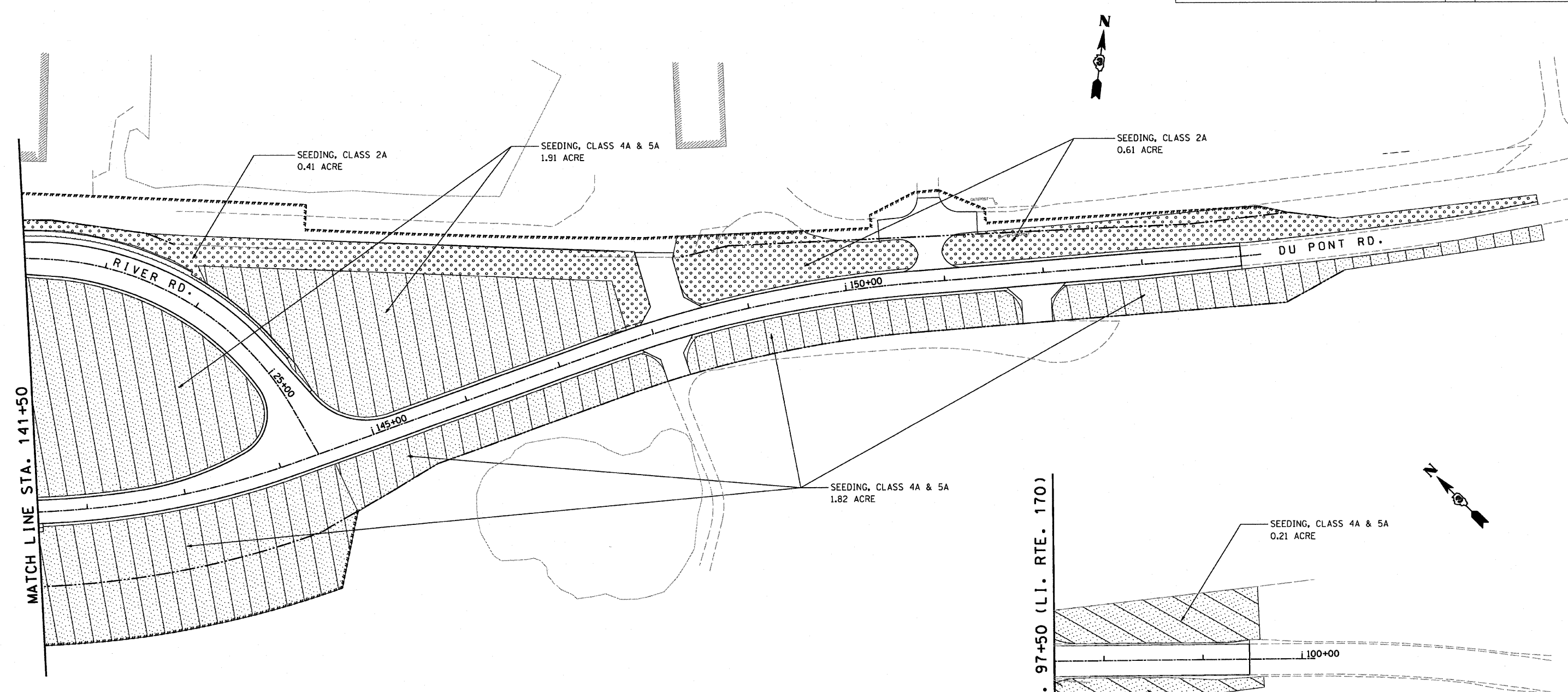


F.A.P. RTE.	SECTION	COUNTY	TOTAL SHEETS	SHEET NO.
786	(109) BR	LASALLE	351	182
STA. 61+50		TO STA. 100+00		
FED. ROAD DIST. NO.		ILLINOIS FED. AID PROJECT		



**LEGEND**

	SEEDING CLASS 1
	SEEDING CLASS 2A
	SEEDING CLASS 3
	SEEDING CLASS 4A AND 5A
	SODDING, SALT TOLERANT

CODE	ITEM DESCRIPTION	UNIT	TOTAL QUANTITY
25000100	SEEDING, CLASS 1	ACRE	0.80
25000210	SEEDING, CLASS 2A	ACRE	3.96
25000300	SEEDING CLASS 3	ACRE	1.18
25000312	SEEDING CLASS 4A	ACRE	7.87
25000322	SEEDING CLASS 5A	ACRE	7.87
25000400	NITROGEN FERTILIZER NUTRIENT	POUND	1976
25000500	PHOSPHORUS FERTILIZER NUTRIENT	POUND	1976
25000600	POTASSIUM FERTILIZER NUTRIENT	POUND	1976
25200110	SODDING, SALT TOLERANT	SQ YD	1995

NOTE: ALL SEEDING AREAS TO BE COVERED WITH MULCH, METHOD 2. (SEE EROSION CONTROL PLANS).

REVISIONS		ILLINOIS DEPARTMENT OF TRANSPORTATION
NAME	DATE	
		<p align="center"><b>LANDSCAPE PLAN</b></p> <p align="center"><b>IL 170 BRIDGE REPLACEMENT AT SENECA</b></p> <p>SCALE: 1" = 50'</p> <p>DATE: OCTOBER, 2007</p> <p>DRAWN BY: REB CHECKED BY: JCL</p>

PLOT DATE = 10/11/2007  
FILE NAME = MFL182  
PLOT SCALE = 8/32000  
USER NAME = project