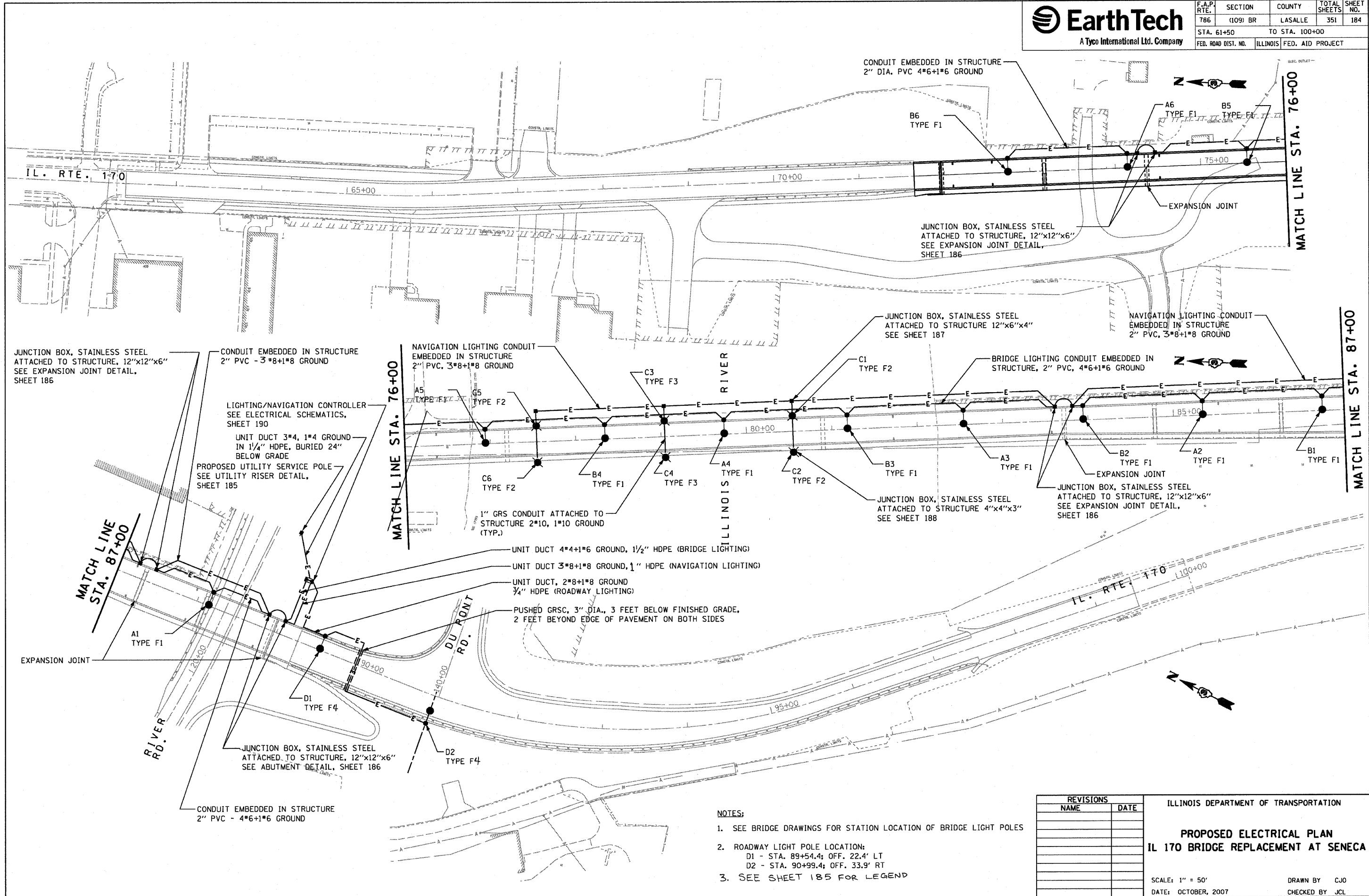


F.A.P. RTE.	SECTION	COUNTY	TOTAL SHEETS	SHEET NO.
786	(109) BR	LASALLE	351	184
STA. 61+50		TO STA. 100+00		
FED. ROAD DIST. NO.	ILLINOIS FED. AID PROJECT			



JUNCTION BOX, STAINLESS STEEL ATTACHED TO STRUCTURE, 12"x12"x6" SEE EXPANSION JOINT DETAIL, SHEET 186

CONDUIT EMBEDDED IN STRUCTURE 2" PVC - 3*8+1*8 GROUND

LIGHTING/NAVIGATION CONTROLLER SEE ELECTRICAL SCHEMATICS, SHEET 190

UNIT DUCT 3*4, 1*4 GROUND IN 1/4" HDPE, BURIED 24" BELOW GRADE

PROPOSED UTILITY SERVICE POLE SEE UTILITY RISER DETAIL, SHEET 185

NAVIGATION LIGHTING CONDUIT EMBEDDED IN STRUCTURE 2" PVC, 3*8+1*8 GROUND

MATCH LINE STA. 76+00

RIVER ILLINOIS

1" GRS CONDUIT ATTACHED TO STRUCTURE 2*10, 1*10 GROUND (TYP.)

UNIT DUCT 4*4+1*6 GROUND, 1/2" HDPE (BRIDGE LIGHTING)

UNIT DUCT 3*8+1*8 GROUND, 1" HDPE (NAVIGATION LIGHTING)

UNIT DUCT, 2*8+1*8 GROUND 3/4" HDPE (ROADWAY LIGHTING)

PUSHED GRSC, 3" DIA., 3 FEET BELOW FINISHED GRADE, 2 FEET BEYOND EDGE OF PAVEMENT ON BOTH SIDES

CONDUIT EMBEDDED IN STRUCTURE 2" DIA. PVC 4*6+1*6 GROUND

B6 TYPE F1

A6 TYPE F1

B5 TYPE F1

JUNCTION BOX, STAINLESS STEEL ATTACHED TO STRUCTURE, 12"x12"x6" SEE EXPANSION JOINT DETAIL, SHEET 186

JUNCTION BOX, STAINLESS STEEL ATTACHED TO STRUCTURE 12"x6"x4" SEE SHEET 187

NAVIGATION LIGHTING CONDUIT EMBEDDED IN STRUCTURE 2" PVC, 3*8+1*8 GROUND

BRIDGE LIGHTING CONDUIT EMBEDDED IN STRUCTURE, 2" PVC, 4*6+1*6 GROUND

C1 TYPE F2

C3 TYPE F3

A5 TYPE F1

G5 TYPE F2

C6 TYPE F2

B4 TYPE F1

C4 TYPE F3

A4 TYPE F1

C2 TYPE F2

B3 TYPE F1

A3 TYPE F1

B2 TYPE F1

A2 TYPE F1

B1 TYPE F1

JUNCTION BOX, STAINLESS STEEL ATTACHED TO STRUCTURE 4"x4"x3" SEE SHEET 188

JUNCTION BOX, STAINLESS STEEL ATTACHED TO STRUCTURE, 12"x12"x6" SEE EXPANSION JOINT DETAIL, SHEET 186

MATCH LINE STA. 87+00

RIVER RD.

DU RONT RD.

IL. RTE. 170

MATCH LINE STA. 87+00

NOTES:

- SEE BRIDGE DRAWINGS FOR STATION LOCATION OF BRIDGE LIGHT POLES
- ROADWAY LIGHT POLE LOCATION:
D1 - STA. 89+54.4; OFF. 22.4' LT
D2 - STA. 90+99.4; OFF. 33.9' RT
- SEE SHEET 185 FOR LEGEND

REVISIONS	
NAME	DATE

ILLINOIS DEPARTMENT OF TRANSPORTATION

**PROPOSED ELECTRICAL PLAN
IL 170 BRIDGE REPLACEMENT AT SENECA**

SCALE: 1" = 50'
DATE: OCTOBER, 2007

DRAWN BY: CJO
CHECKED BY: JCL

PLOT DATE = 10/11/2007
PLOT NAME = 184.PLS
PLOT SCALE = ESCALAR
USER NAME = project