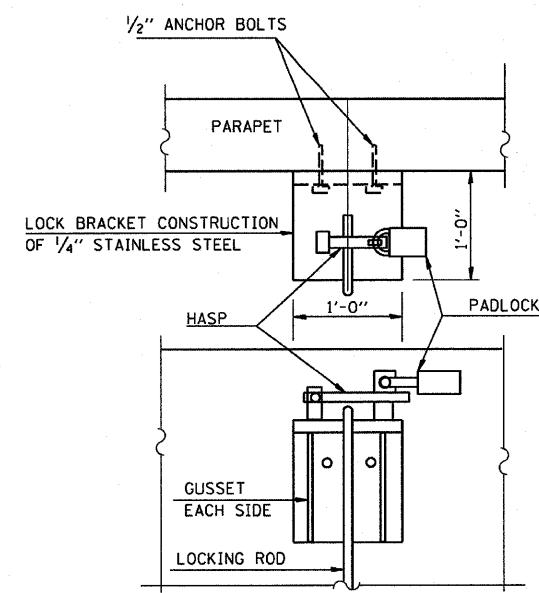
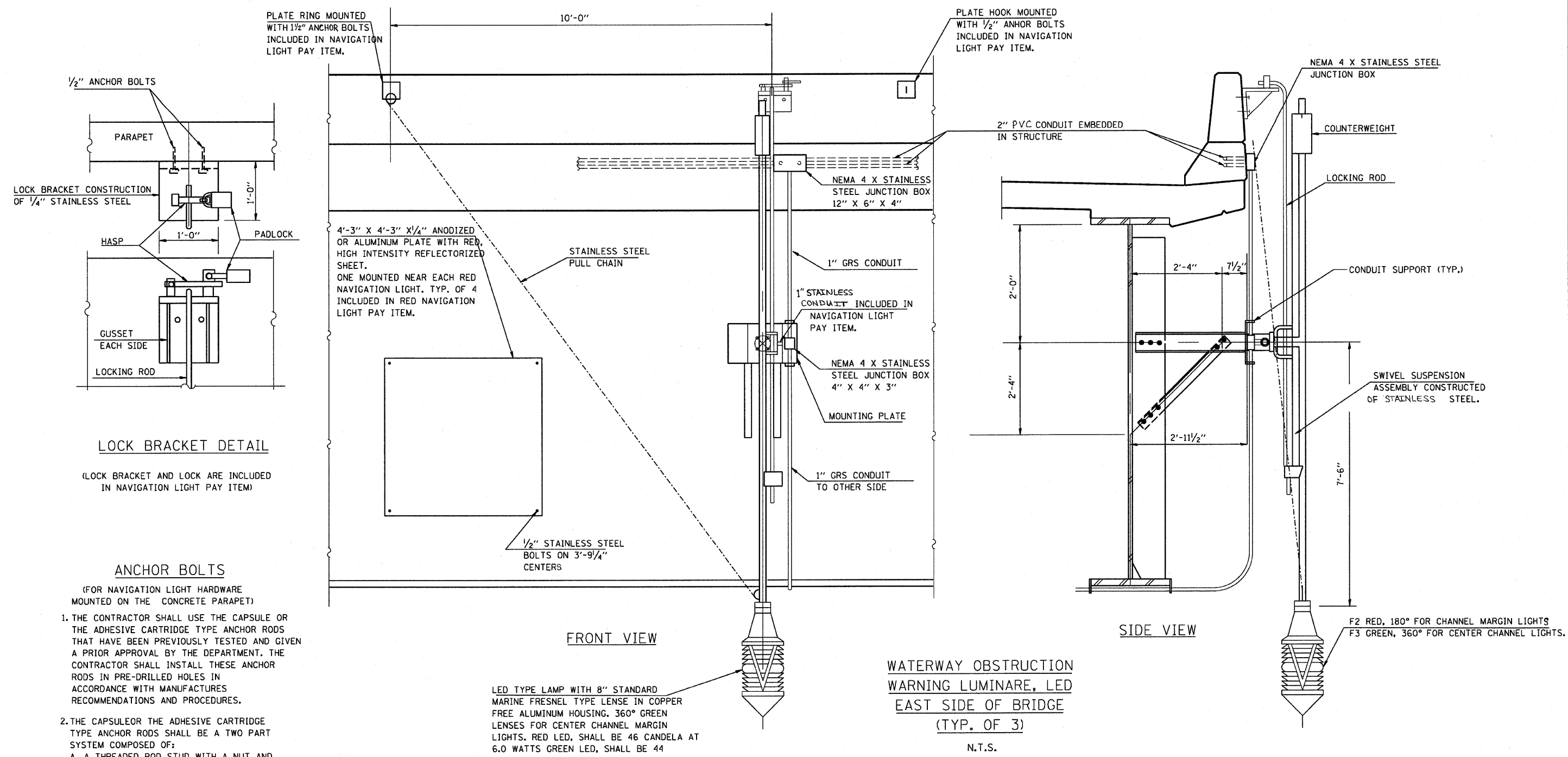


F.A.P. RTE.	SECTION	COUNTY	TOTAL SHEETS	SHEET NO.
786	(109) BR	LASALLE	351	187
STA.		TO STA.		
FED. ROAD DIST. NO.		ILLINOIS	FED. AID PROJECT	



LOCK BRACKET DETAIL

(LOCK BRACKET AND LOCK ARE INCLUDED IN NAVIGATION LIGHT PAY ITEM)

ANCHOR BOLTS

- (FOR NAVIGATION LIGHT HARDWARE MOUNTED ON THE CONCRETE PARAPET)
1. THE CONTRACTOR SHALL USE THE CAPSULE OR THE ADHESIVE CARTRIDGE TYPE ANCHOR RODS THAT HAVE BEEN PREVIOUSLY TESTED AND GIVEN A PRIOR APPROVAL BY THE DEPARTMENT. THE CONTRACTOR SHALL INSTALL THESE ANCHOR RODS IN PRE-DRILLED HOLES IN ACCORDANCE WITH MANUFACTURES RECOMMENDATIONS AND PROCEDURES.
 2. THE CAPSULE OR THE ADHESIVE CARTRIDGE TYPE ANCHOR RODS SHALL BE A TWO PART SYSTEM COMPOSED OF:
 - A. A THREADED ROD STUD WITH A NUT AND WASHER OF THE TYPE SPECIFIED.
 - B. A SEALED GLASS CAPSULE OR A SEALED GLASS ADHESIVE CARTRIDGE CONTAINING PREMEASURED AMOUNTS OF THE ADHESIVE CHEMICAL.

LED TYPE LAMP WITH 8" STANDARD MARINE FRESNEL TYPE LENSE IN COPPER FREE ALUMINUM HOUSING. 360° GREEN LENSES FOR CENTER CHANNEL MARGIN LIGHTS. RED LED, SHALL BE 46 CANDELA AT 6.0 WATTS GREEN LED, SHALL BE 44 CANDELA AT 8.4 WATTS.

WATERWAY OBSTRUCTION WARNING LUMINAIRE, LED (TYP. OF 3)

N.T.S.

PLOT DATE = 10/1/2007
PLOT SCALE = 1/8" = 1'-0"
USER NAME = project

REVISIONS	
NAME	DATE

ILLINOIS DEPARTMENT OF TRANSPORTATION

ELECTRICAL DETAILS
IL 170 BRIDGE REPLACEMENT AT SENECA

SCALE: 1" = 50'
DATE: OCTOBER, 2007

DRAWN BY: CJO
CHECKED BY: JCL