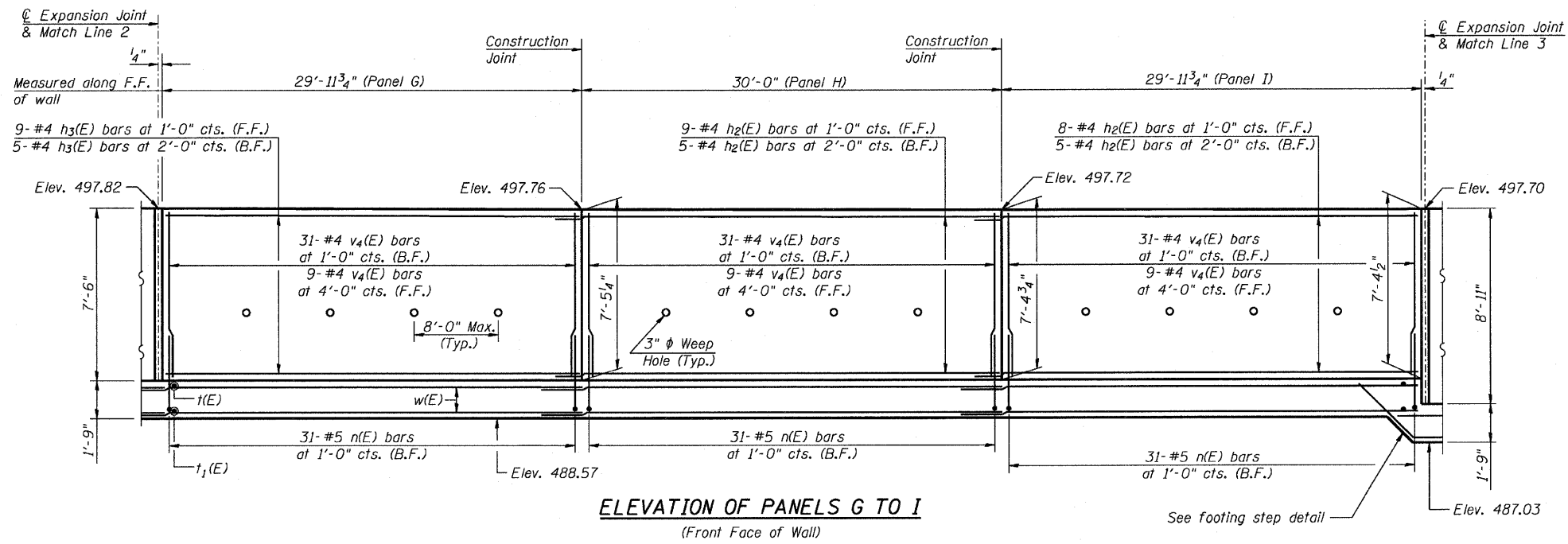
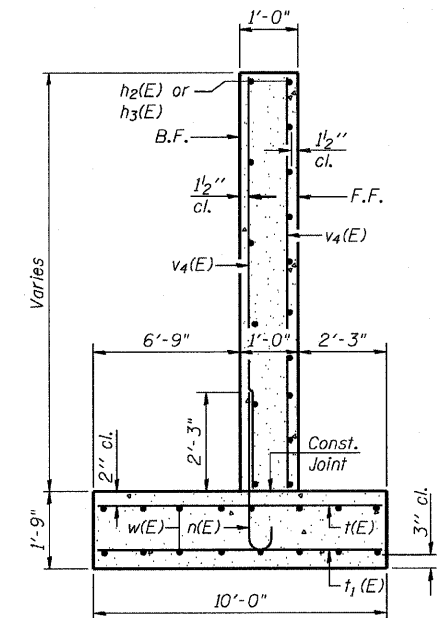


STATE OF ILLINOIS
DEPARTMENT OF TRANSPORTATION

F.A.P. ROUTE NO.	SECTION	COUNTY	TOTAL SHEETS	SHEET NO.	SHEET NO. 5 6 SHEETS
786	109 BR	La Salle	351	196	
FED. ROAD DIST. NO. 7	ILLINOIS	FED. AID PROJECT-	Contract #66607		

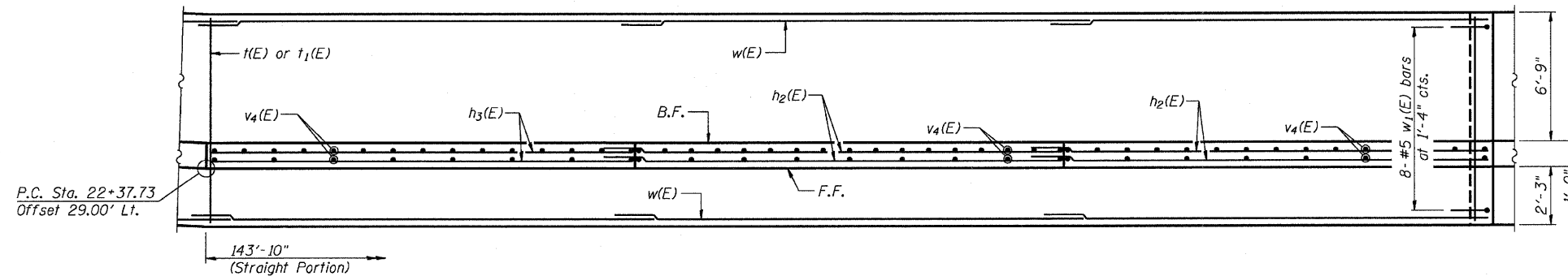


ELEVATION OF PANELS G TO I
(Front Face of Wall)



SECTION THRU WALL

MIN BAR LAP
#4 Bars = 1'-8"
#5 Bars = 2'-2"



FOOTING PLAN OF PANELS G TO I

Note:
See Sheet 6 of 6 for Joint Details, Bar Bends and Bar List.

DESIGNED	JVR
CHECKED	DLS
DRAWN	JVR
CHECKED	DLS



PANELS G, H & I
RETAINING WALL
RIVER ROAD
SECTION 109 BR
LA SALLE COUNTY