

Contract # 66607

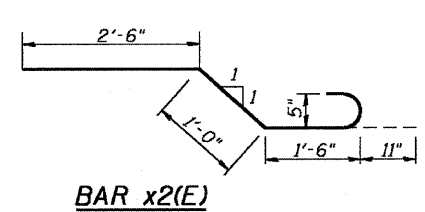
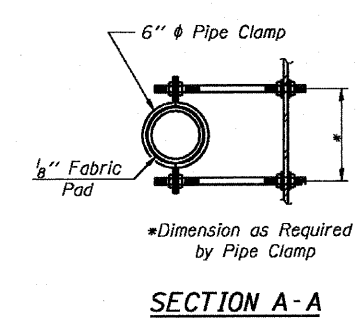
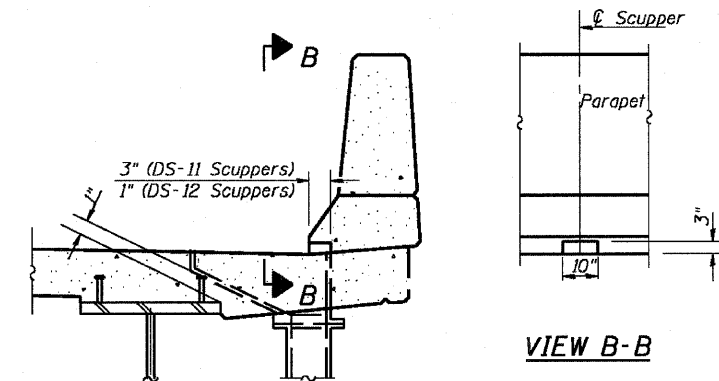
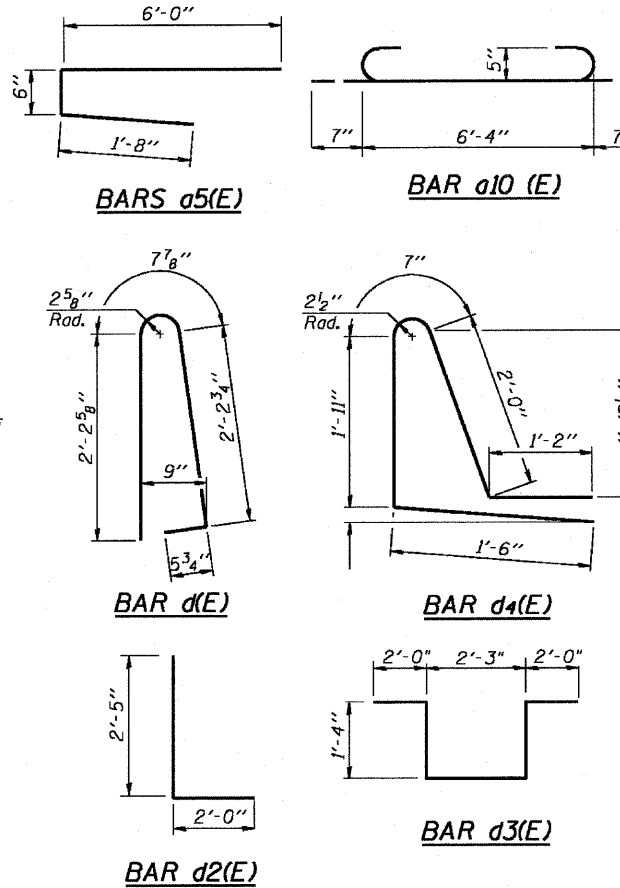
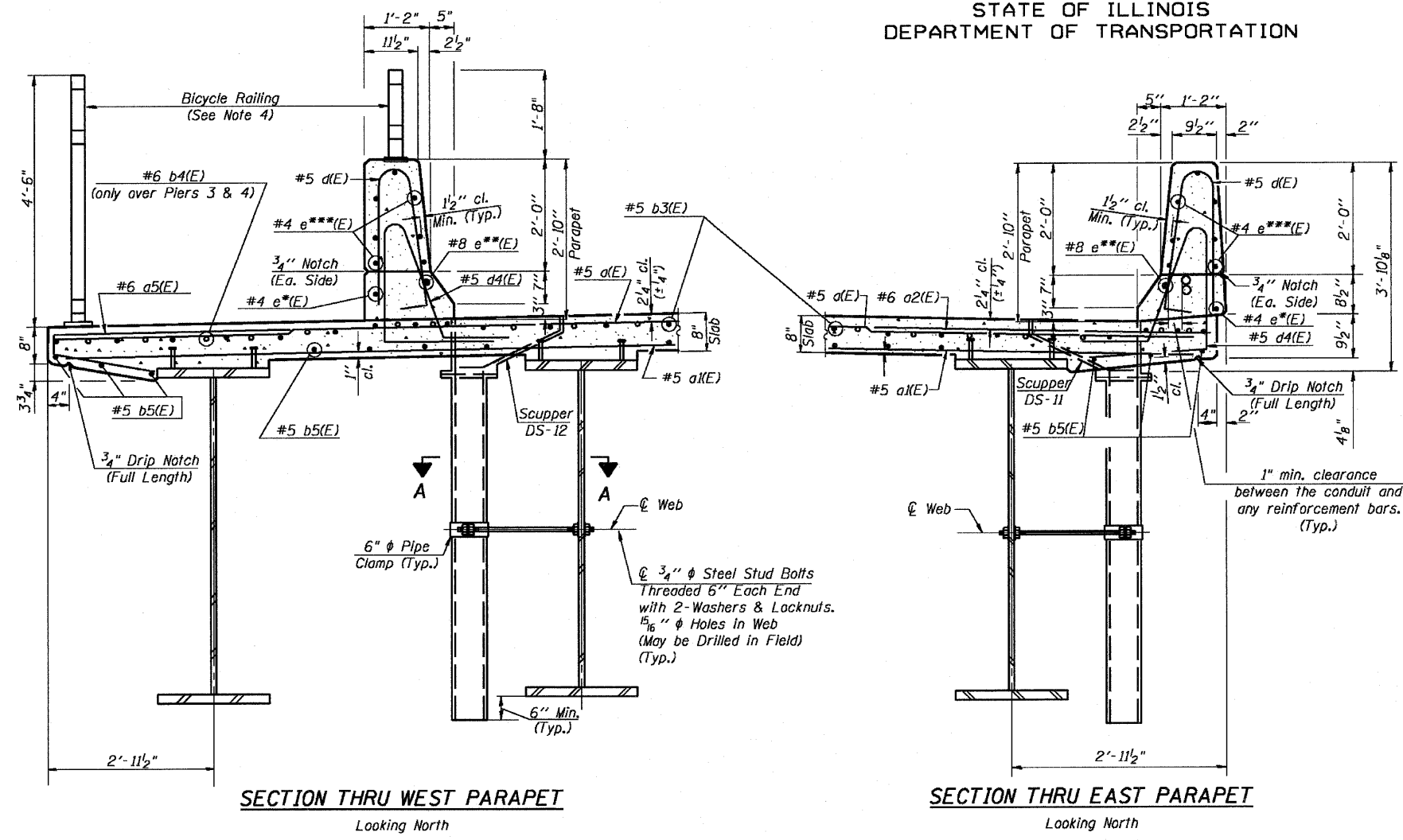
**SUPERSTRUCTURE  
BILL OF MATERIAL**

Unit 2 (Pier 2 to Pier 5)

Bar	No.	Size	Length	Shape
a(E)	1317	#5	38'-4"	
a1(E)	1123	#5	37'-8"	
a2(E)	659	#6	6'-0"	
a4(E)	64	#5	2'-0"	
a5(E)	659	#6	8'-2"	
a10(E)	30	#5	7'-6"	
a12(E)	8	#6	38'-4"	
b3(E)	1025	#5	39'-6"	
b4(E)	390	#6	36'-5"	
b5(E)	806	#5	38'-1"	
d(E)	2040	#5	5'-7"	
d2(E)	18	#6	4'-5"	
d3(E)	30	#6	8'-11"	
d4(E)	2040	#5	7'-2"	
e(E)	128	#4	19'-8"	
e1(E)	16	#8	19'-8"	
e6(E)	28	#4	35'-9"	
e7(E)	28	#8	37'-7"	
e8(E)	16	#4	37'-5"	
e9(E)	16	#8	39'-3"	
e10(E)	336	#4	18'-4"	
e11(E)	210	#4	19'-0"	
e12(E)	28	#4	17'-11"	
x2(E)	60	#5	5'-11"	
Reinforcement Bars, Epoxy Coated	Pound		250,480	
Concrete Superstructure	Cu. Yd.		1,182.2	
Bridge Deck Grooving	Sq. Yd.		2,909	
Protective Coat	Sq. Yd.		3,898	

**MINIMUM BAR LAPS**

- (Slab)  
#5 bar = 2'-2"  
#6 bar = 2'-7"  
#7 bar = 3'-5"  
(Parapet)  
#4 bar = 1'-4"  
#8 bar = 3'-5"



**PARAPET BLOCKOUT FOR SCUPPERS**  
(Applicable only to scuppers in Unit 2)

#4 e\*(E) = Bars #4 e(E) or #4 e6(E) or #4 e8(E)  
#8 e\*(E) = Bars #8 e1(E) or #8 e7(E) or #8 e9(E)  
#4 e\*\*\*\*(E) = Bars #4 e(E) or #4 e10(E) or #4 e11(E) or #4 e12(E)

- Notes:**
1. Work this sheet with Sheets 23, 24, & 25.
  2. See Sheet 34 for Parapet Joint Details, Parapet Projection Details/Reinforcement, & Scupper Reinforcement Details.
  3. See Sheets 35 & 36 for DS-11 & DS-12 Drainage Scupper Details, respectively.
  4. See Sheet 37 for Bicycle Railing Details.
  5. Bars indicated thus 20x3-#5 etc, indicates 20 lines of bars with 3 lengths per line.
  6. Cut longitudinal reinforcement to clear drainage scuppers.

**SUPERSTRUCTURE DETAILS  
UNIT 2**  
**IL. 170 F.A.P. 786 OVER  
ILLINOIS RIVER AT SENECA  
PUBLIC WATERS**  
**LA SALLE COUNTY, SECTION 109 BR**  
**STATION 79+04.42**  
**STRUCTURE NO. 050-0246**

DESIGNED - CLS
CHECKED - RJC
DRAWN - JHR
CHECKED - RJC