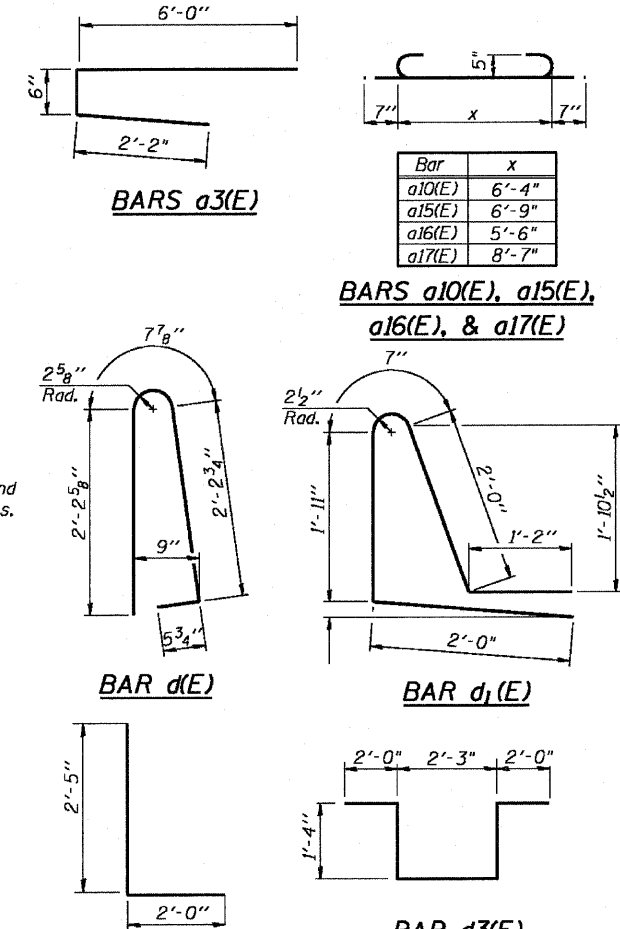
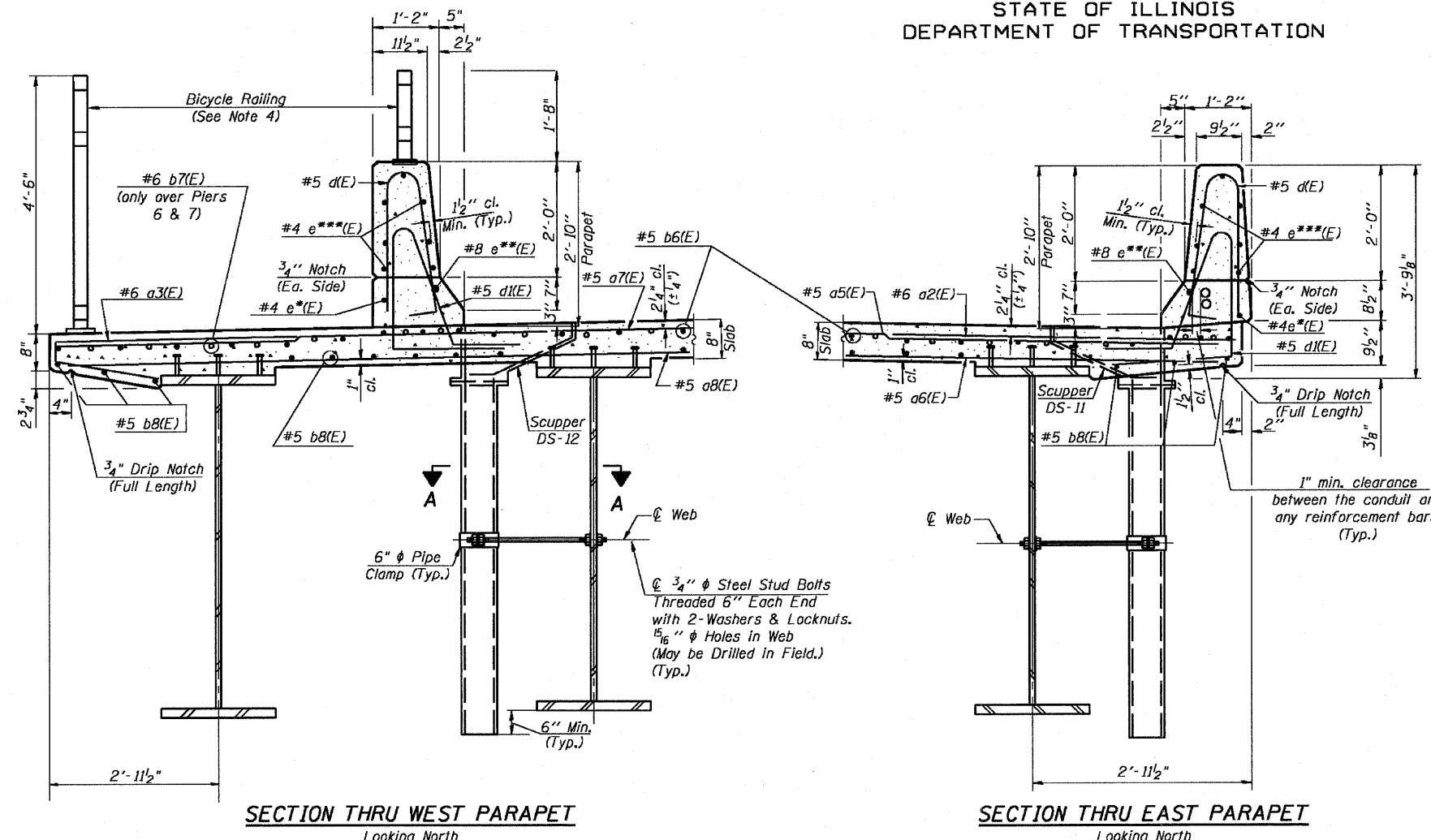


STATE OF ILLINOIS
DEPARTMENT OF TRANSPORTATION



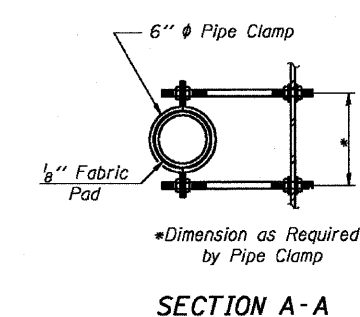
F.A.P. ROUTE NO.	SECTION	COUNTY	SHEETS	SHEET	SHEET NO.
786	109 BR	La Salle	351	230	89
FED. ROAD DIST. NO. 7	ILLINOIS	FED. AID PROJECT			

Contract # 66607

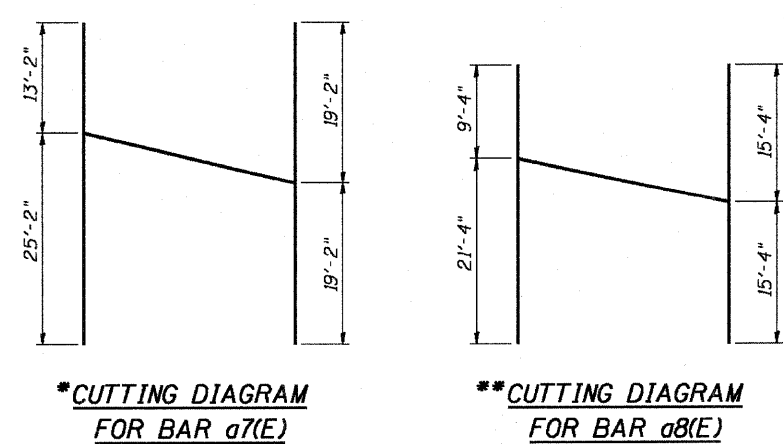


**SUPERSTRUCTURE
BILL OF MATERIAL**
Unit 3 (Pier 5 to Pier 8)

Bar	No.	Size	Length	Shape
a2(E)	286	#6	6'-0"	—
a3(E)	357	#6	8'-8"	—
a4(E)	32	#5	2'-0"	—
a5(E)	571	#5	27'-5"	—
a6(E)	432	#5	30'-7"	—
a7(E)	357	#5	38'-4"	—
a8(E)	270	#5	30'-8"	—
a10(E)	12	#5	7'-6"	—
a12(E)	4	#6	38'-4"	—
a13(E)	2	#6	23'-7"	—
a14(E)	8	#7	26'-11"	—
a15(E)	12	#5	7'-11"	—
a16(E)	3	#5	6'-8"	—
a17(E)	6	#6	9'-9"	—
b6(E)	500	#5	38'-0"	—
b7(E)	288	#6	26'-0"	—
b8(E)	508	#5	32'-0"	—
d(E)	786	#5	5'-7"	—
d1(E)	786	#5	7'-8"	—
d2(E)	9	#6	4'-5"	—
d3(E)	15	#6	8'-11"	—
e(E)	64	#4	19'-8"	—
e1(E)	8	#8	19'-8"	—
e13(E)	12	#4	29'-6"	—
e14(E)	12	#8	30'-11"	—
e15(E)	6	#4	36'-10"	—
e16(E)	6	#8	38'-3"	—
e17(E)	140	#4	16'-10"	—
e18(E)	98	#4	14'-9"	—
x1(E)	40	#5	5'-11"	—
x2(E)	30	#5	5'-11"	—
Reinforcement Bars, Epoxy Coated	Pound	126,730		
Concrete Superstructure	Cu. Yd.	504.1		
Bridge Deck Grooving	Sq. Yd.	1,360		
Protective Coat	Sq. Yd.	1,740		



#4 e*(E) = Bars #4 e(E) or #4 e13(E) or #4 e15(E)
 #8 e**(E) = Bars #8 e(E) or #8 e14(E) or #8 e16(E)
 #4 e***(E) = Bars #4 e(E) or #4 e17(E) or #4 e18(E)



- Notes:**
1. Work this sheet with Sheets 27, 28, & 29.
 2. See Sheet 34 for Parapet Joint Details, Parapet Projection Details/Reinforcement, & Scupper Reinforcement Details.
 3. See Sheets 35 & 36 for DS-11 & DS-12 Drainage Scupper Details, respectively.
 4. See Sheet 37 for Bicycle Railing Details.
 5. Bars indicated thus 20x3-#5 etc. indicates 20 lines of bars with 3 lengths per line.
 6. Cut longitudinal reinforcement to clear drainage scuppers.

MINIMUM BAR LAPS

(Slab)
 #5 bar = 2'-2"
 #6 bar = 2'-7"
 #7 bar = 3'-5"

(Parapet)
 #4 bar = 1'-4"
 #8 bar = 3'-5"

SUPERSTRUCTURE DETAILS
UNIT 3
IL. 170 F.A.P. 786 OVER
ILLINOIS RIVER AT SENECA
PUBLIC WATERS
LA SALLE COUNTY, SECTION 109 BR
STATION 79+04.42
STRUCTURE NO. 050-0246

DESIGNED - CLS
CHECKED - RJC
DRAWN - JHR
CHECKED - RJC