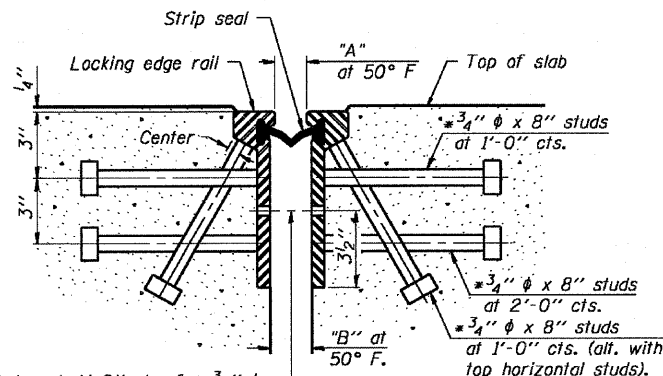


* Granular or solid flux filled headed studs conforming to Article 1006.32 of the Std. Specs., automatically end welded.

STATE OF ILLINOIS
DEPARTMENT OF TRANSPORTATION

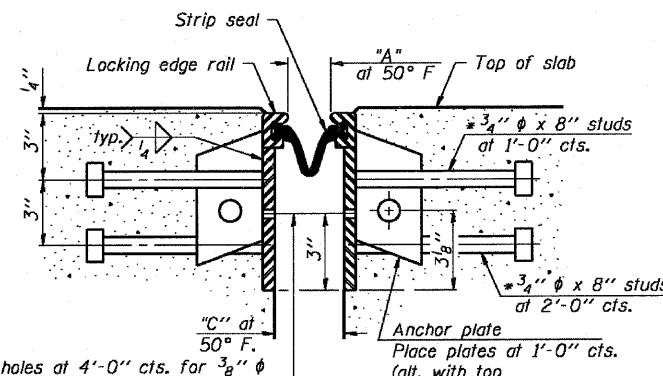
EarthTech A tyco International Ltd. Company	F.A.P. ROUTE NO.	SECTION	COUNTY	MILES	SHEET	SHEET NO. 38 89 SHEETS
	786	109 BR	La Salle	351	238	
FED. ROAD DIST. NO. 7		ILLINOIS		FED. AID PROJECT		

Contract # 66607



7/16" ϕ holes at 4'-0" cts. for 3/8" ϕ bolts. All bolts shall be burned, sawed, or chipped off flush with the plates after forms are removed, typ.

SECTION THRU
ROLLED RAIL JOINT



7/16" ϕ holes at 4'-0" cts. for 3/8" ϕ bolts. All bolts shall be burned, sawed, or chipped off flush with the plates after forms are removed, typ.

SECTION THRU ALTERNATE
WELDED RAIL JOINT

Location	"A"	"B"	"C"
N. Abut.	1 1/2"	2"	2 3/4"
Pier 8	1 3/4"	2 1/4"	3"
S. Abut.	1 1/2"	2"	2 3/4"

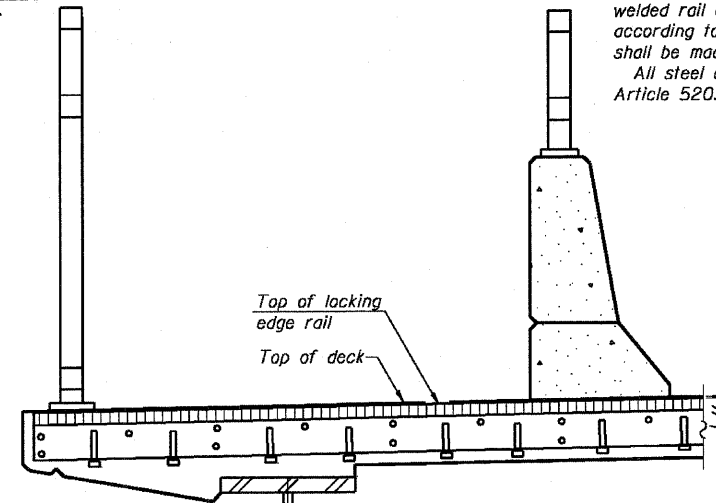
Notes:

The strip seal shall be made continuous and shall have a minimum thickness of 1/4". The configuration of the strip seal shall match the configuration of the Locking Edge Rails. Open or "webbed" strip seal gland configurations are not permitted. The gland shall be sized for a maximum rated movement of 4 inches.

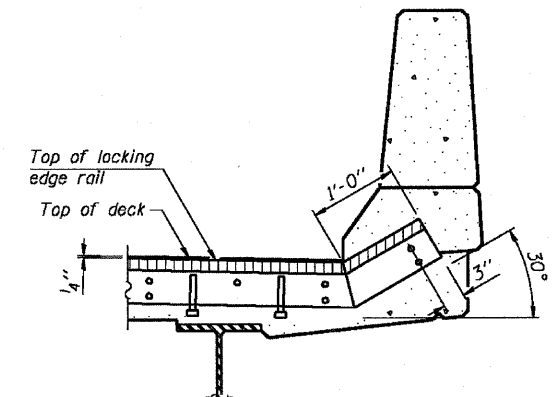
The height and thickness of the Locking Edge Rails shown are minimum dimensions. The actual configuration of the Locking Edge Rails and matching strip seal may vary from manufacturer to manufacturer. Flanged edge rails will not be allowed. Locking Edge Rails may be spliced at slope discontinuities and stage construction joints.

The manufacturer's recommended installation methods shall be followed. The joint opening and deck dimensions detailed on the superstructure are based on a rolled rail expansion joint. If the Contractor elects to use the welded rail expansion joint, the opening and deck dimensions shall be modified according to the dimensions detailed on this sheet. Required modifications shall be made at no additional cost to the State.

All steel components shall be galvanized after fabrication according to Article 520.03 of the Standard Specifications.

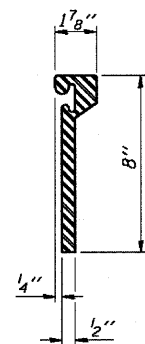


AT WEST RAILING

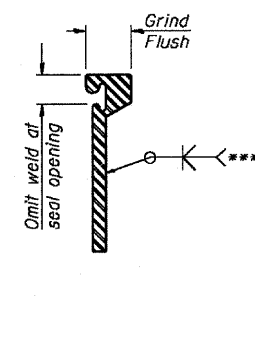


AT EAST PARAPET

TYPICAL END TREATMENTS

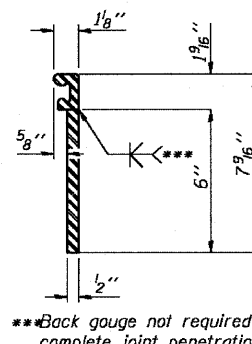


ROLLED
(EXTRUDED) RAIL



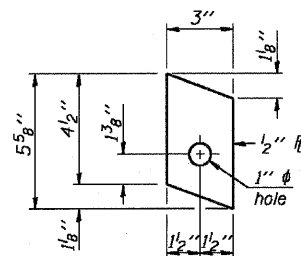
LOCKING EDGE
RAIL SPLICE

The inside of the locking edge rail groove shall be free of weld residue.

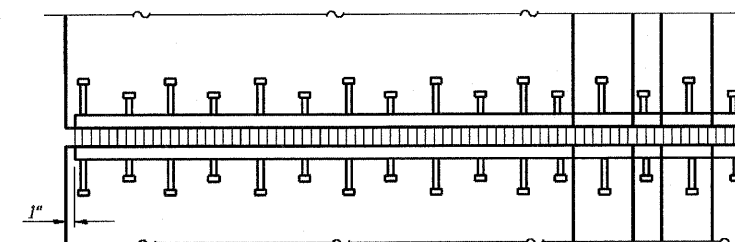


ALTERNATE
WELDED RAIL

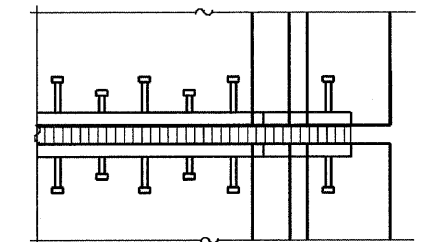
LOCKING EDGE RAILS



ANCHOR PLATE
(for welded rail)



PLAN



BILL OF MATERIAL

Item	Unit	Total
Preformed Joint Strip Seal	Foot	139'-0"

DESIGNED - CLS
CHECKED - DEV
DRAWN - JHR
CHECKED - RJC

PREFORMED JOINT STRIP SEAL
IL. 170 F.A.P. 786 OVER
ILLINOIS RIVER AT SENECA
PUBLIC WATERS
LA SALLE COUNTY, SECTION 109 BR
STATION 79+04.42
STRUCTURE NO. 050-0246