

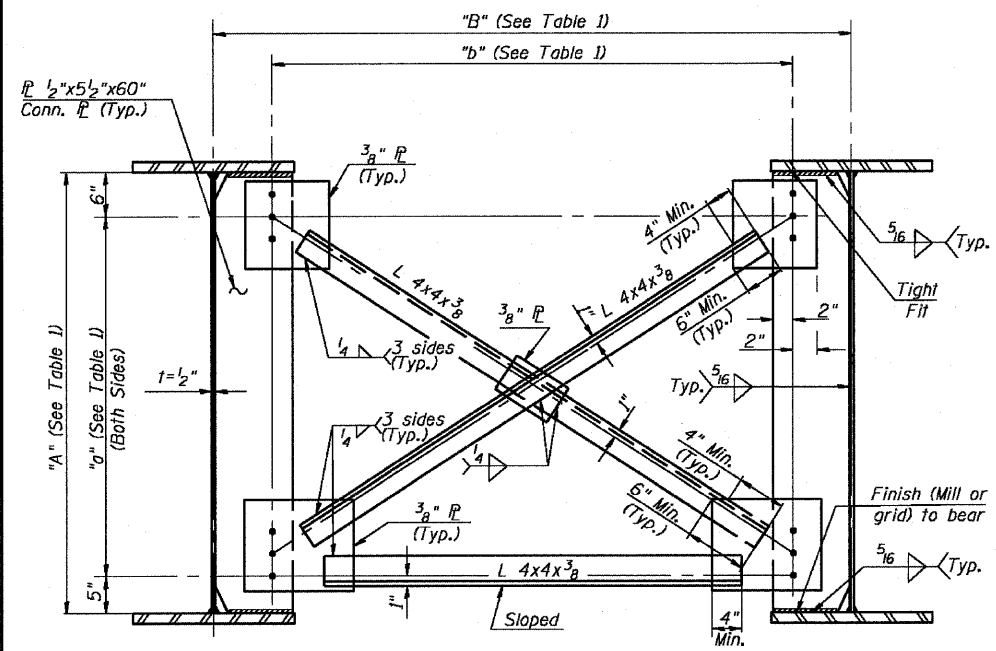
STATE OF ILLINOIS
DEPARTMENT OF TRANSPORTATION



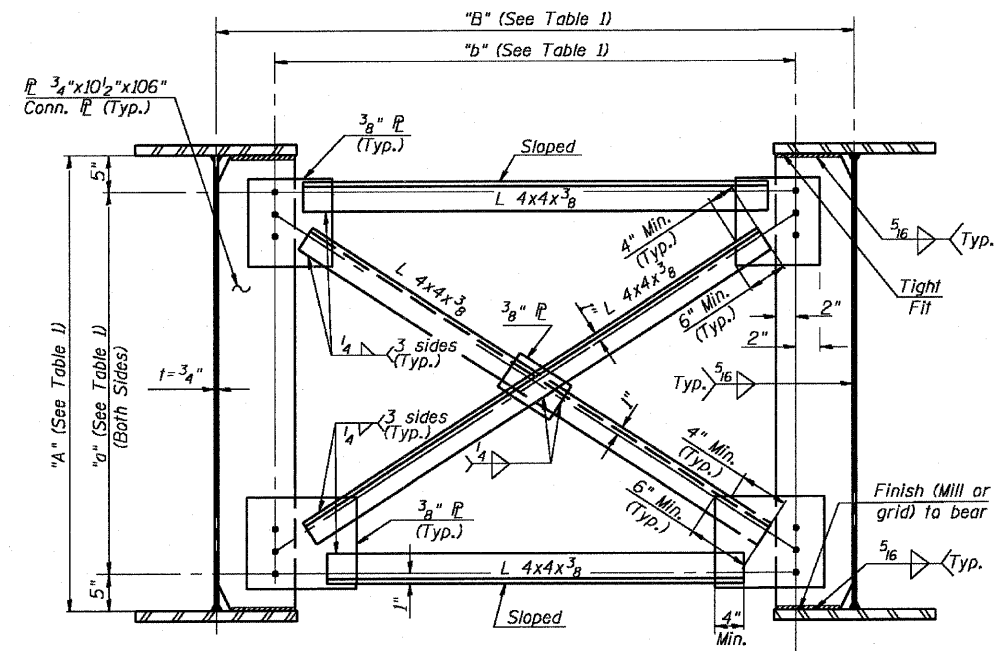
F.A.P. ROUTE NO.	SECTION	COUNTY	POST MILES	SHEET
786	109 BR	La Salle	351	254
FED. ROAD DIST. NO. 7	ILLINOIS	FED. AID PROJECT		

SHEET NO. 54
89 SHEETS

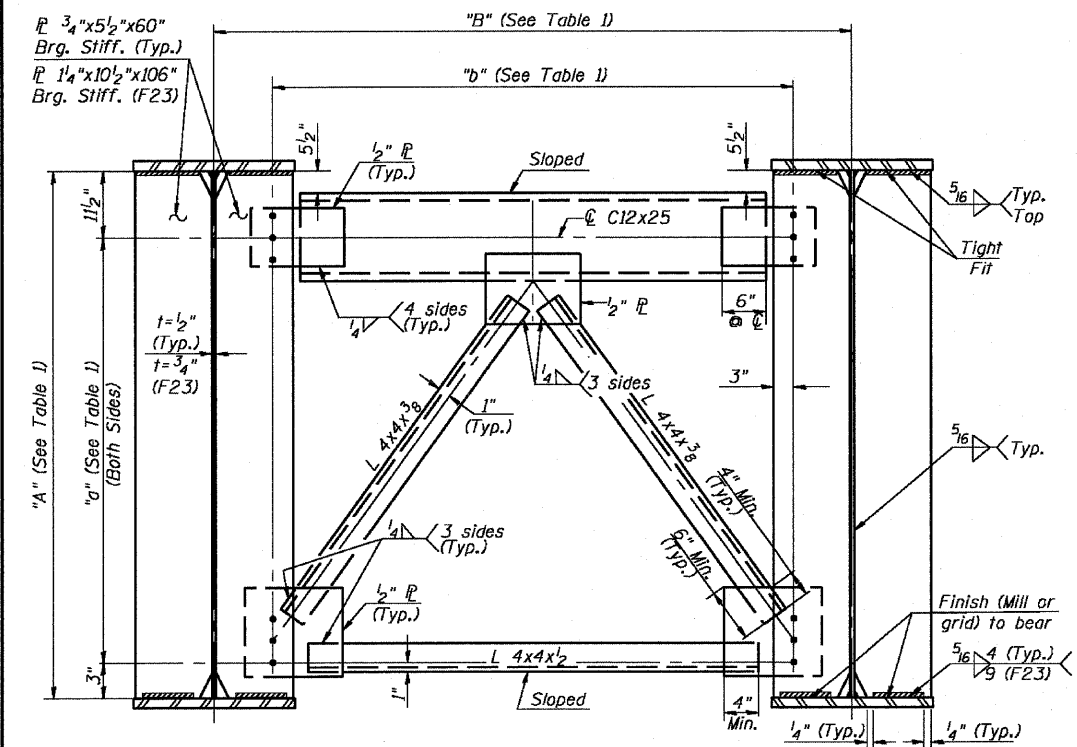
Contract # 66607



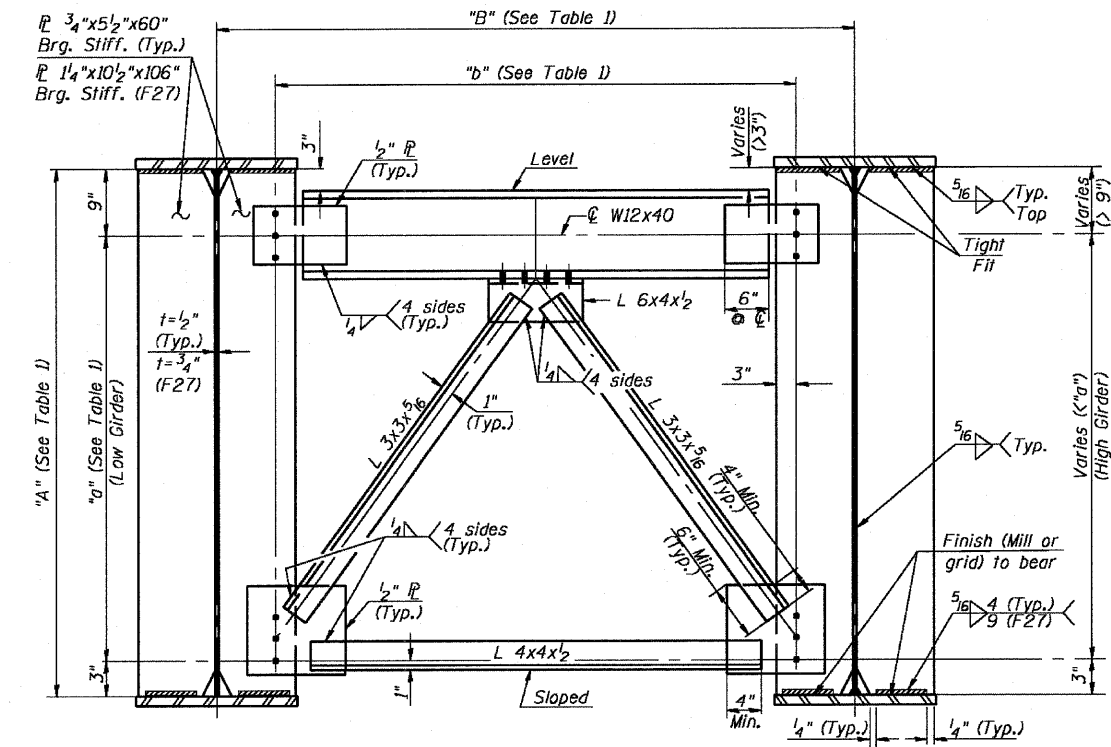
INTERIOR CROSS FRAME TYPE 1 (F1-F16)



INTERIOR CROSS FRAME TYPE 2 (F17)



END CROSS FRAME TYPE 3 (F18-F23)



END CROSS FRAME TYPE 4 (F24-F27)

TABLE 1

Name	Type	Quantity	"A"	"a"	"B"	"b"
F1	1	70	5'-0"	4'-1"	6'-7"	5'-11 1/2"
F2	1	30	5'-0"	4'-1"	7'-0"	6'-4 1/2"
F3	1	1	5'-0"	4'-1"	6'-6 3/4"	5'-11 1/4"
F4	1	1	5'-0"	4'-1"	7'-4 1/16"	6'-8 9/16"
F5	1	2	5'-0"	4'-1"	4'-4 3/16"	3'-8 11/16"
F6	1	2	5'-0"	4'-1"	4'-11 3/16"	4'-3 11/16"
F7	1	2	5'-0"	4'-1"	5'-2 11/16"	4'-7 3/16"
F8	1	2	5'-0"	4'-1"	5'-6 5/8"	4'-11 1/8"
F9	1	2	5'-0"	4'-1"	5'-10 1/2"	5'-3"
F10	1	2	5'-0"	4'-1"	6'-2 3/8"	5'-6 7/8"
F11	1	2	5'-0"	4'-1"	6'-6 5/16"	5'-10 13/16"
F12	1	2	5'-0"	4'-1"	6'-9 13/16"	6'-2 5/16"
F13	1	2	5'-0"	4'-1"	7'-4 13/16"	6'-9 5/16"
F14	1	2	5'-0"	4'-1"	7'-8 5/16"	7'-0 13/16"
F15	1	2	5'-0"	4'-1"	8'-0 15/16"	7'-5 7/16"
F16	1	2	5'-0"	4'-1"	8'-5 5/8"	7'-10 1/8"
F17	2	250	8'-10"	8'-0"	6'-7"	5'-1 1/4"
F18	3	16	5'-0"	3'-9 1/2"	6'-7"	6'-1 1/2"
F19	3	6	5'-0"	3'-9 1/2"	7'-0"	6'-6 1/2"
F20	3	2	5'-0"	3'-9 1/2"	4'-7 11/16"	4'-2 3/16"
F21	3	2	5'-0"	3'-9 1/2"	7'-1 5/16"	6'-7 13/16"
F22	3	2	5'-0"	3'-9 1/2"	8'-10 5/16"	8'-4 13/16"
F23	3	10	8'-10"	7'-7 1/2"	6'-7"	5'-3 1/4"
F24	4	7	5'-0"	4'-0"	6'-7"	6'-1 1/2"
F25	4	2	5'-0"	4'-0"	7'-0"	6'-6 1/2"
F26	4	1	5'-0"	4'-0"	5'-9 3/8"	5'-3 7/8"
F27	4	10	8'-10"	7'-10"	6'-7"	5'-3 1/4"

Notes

1. M270 Grade 50W steel shall be used for all cross frame & connection plate material.
2. Detail 5/16" φ holes for all 3/4" φ bolts.
3. Two hardened washers required for each set of oversized holes.
4. Place diaphragm with channel flanges and outstanding angle legs outward from abutment backwall and any other expansion joint.
5. All cross frames between girders shall be installed with erection pins and bolts in accordance with the erection plan approved by the Engineer. Individual cross frames at supports may be temporarily disconnected to install bearing anchor rods.

DESIGNED - CLS
CHECKED -
DRAWN - JHR
CHECKED -

CROSS FRAME DETAILS
IL. 170 F.A.P. 786 OVER
ILLINOIS RIVER AT SENECA
PUBLIC WATERS
LA SALLE COUNTY, SECTION 109 BR
STATION 79+04.42
STRUCTURE NO. 050-0246