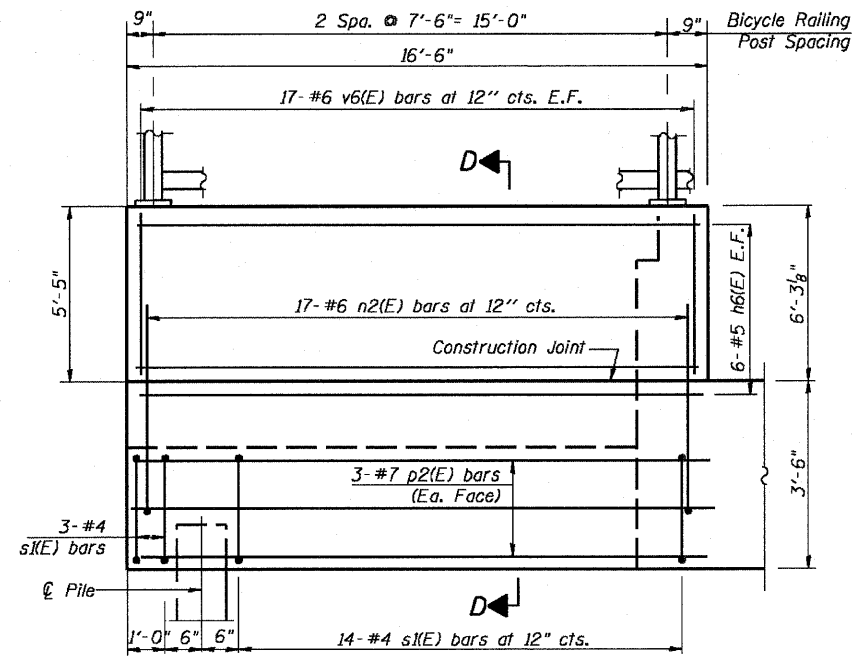


STATE OF ILLINOIS
DEPARTMENT OF TRANSPORTATION

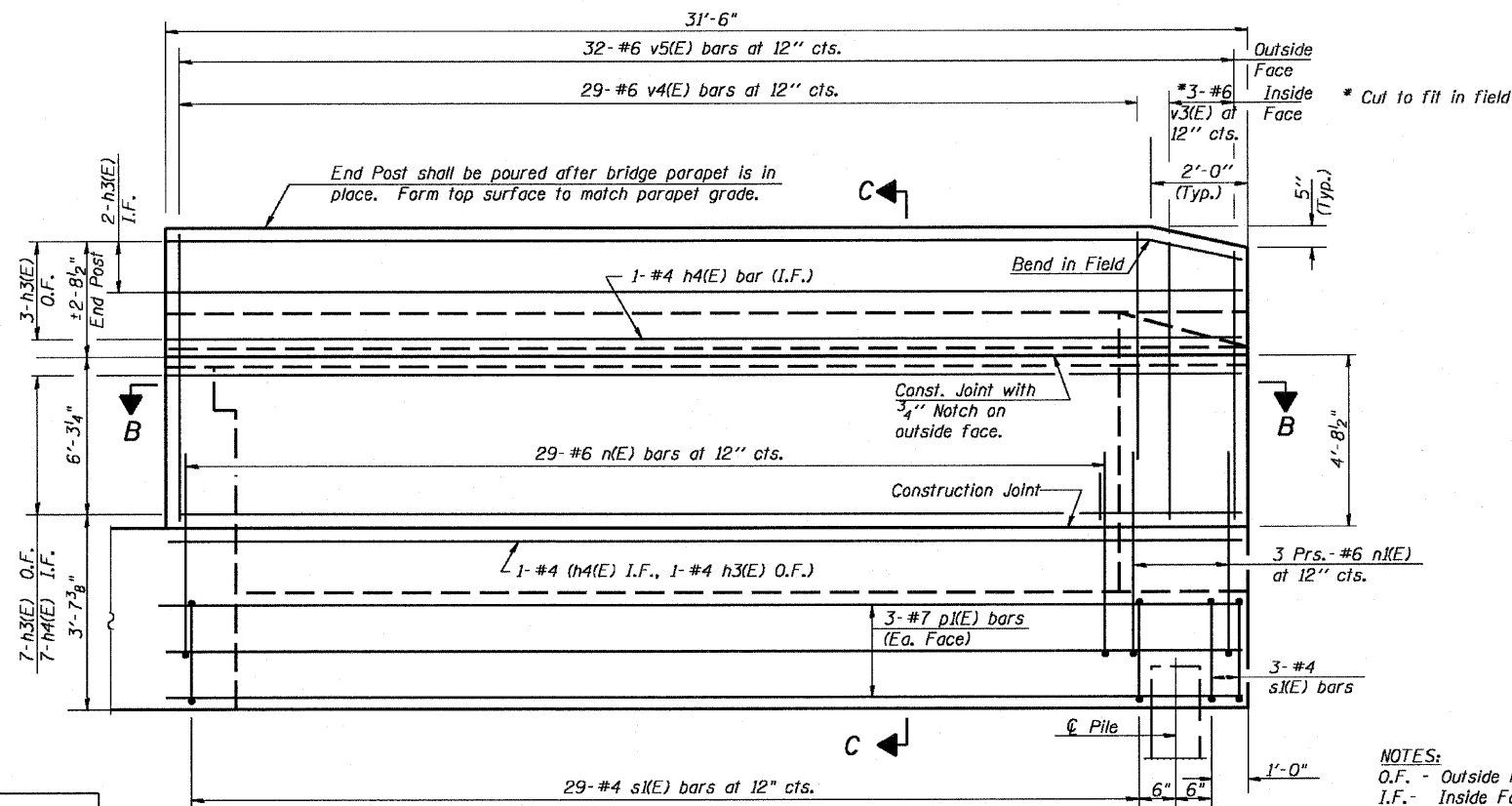


F.A.P. ROUTE NO.	SECTION	COUNTY	TOTAL SHEETS	SHEET NO.
786	109 BR	La Salle	351	263

SHEET NO. 63
89 SHEETS



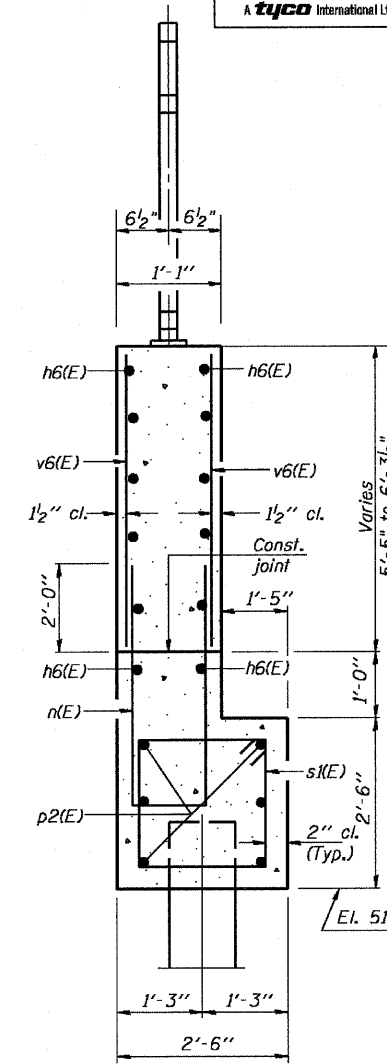
VIEW F-F
WEST WING WALL ELEVATION



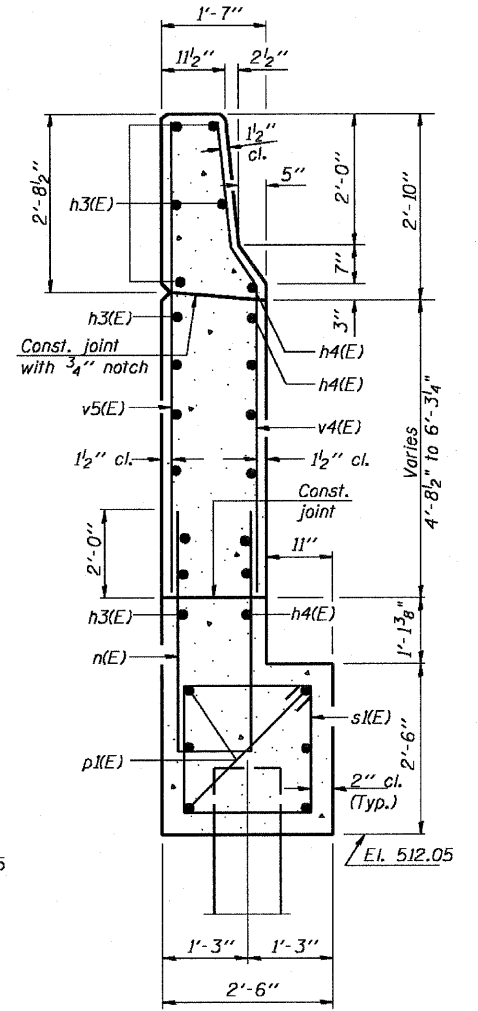
VIEW E-E
EAST WING WALL ELEVATION
N.T.S.

DESIGNED	- RJC
CHECKED	- CLS
DRAWN	- JHR
CHECKED	- RJC

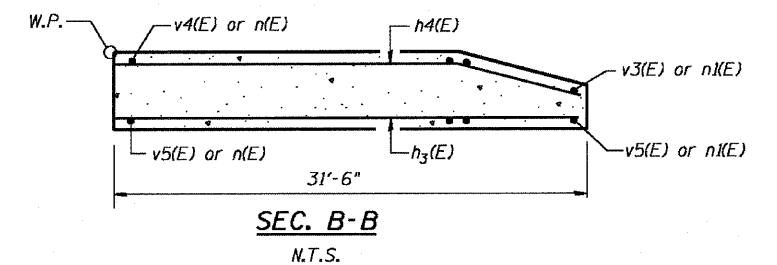
NOTES:
O.F. - Outside Face
I.F. - Inside Face
Quantity of concrete in end post included with Concrete Superstructure on sheet 22 of 92.



SECTION D-D
N.T.S.



SECTION C-C
N.T.S.



SEC. B-B
N.T.S.

NORTH ABUTMENT DETAILS 2
IL. 170 F.A.P. 786 OVER
ILLINOIS RIVER AT SENECA
PUBLIC WATERS
LA SALLE COUNTY, SECTION 109 BR
STATION 79+04.42
STRUCTURE NO. 050-0246