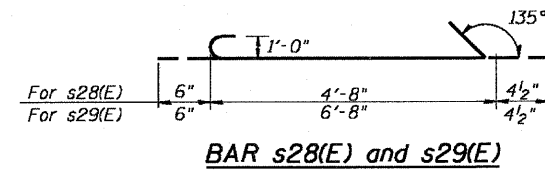
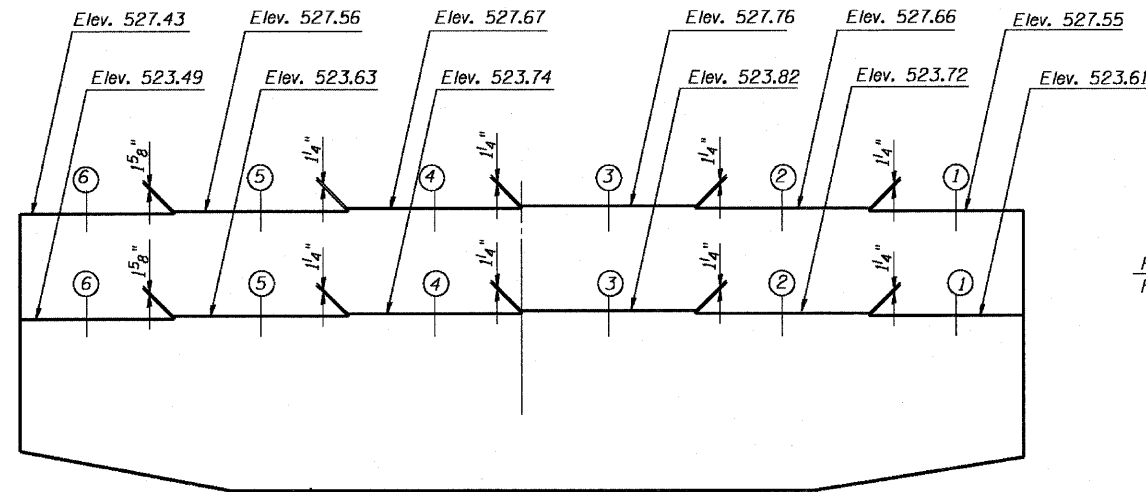
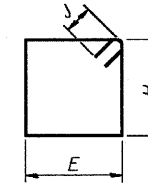


Contract # 66607



E, H & J DIMENSIONS

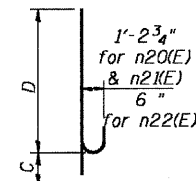
Bar	E	H	J
s20(E)	4'-0"	5'-8"	8"
s24(E)	2'-10"	8'-4"	8"
s25(E)	4'-0"	4'-8"	8"
s26(E)	6'-0"	4'-8"	8"



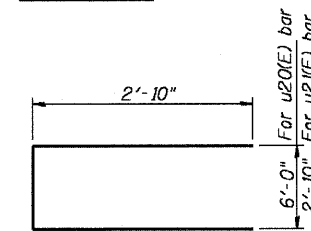
BAR syy(E)

C & D DIMENSIONS

Bar	C	D
n20(E)	1'-7"	12'-0"
n21(E)	1'-7"	15'-0"
n22(E)	8"	8'-7"

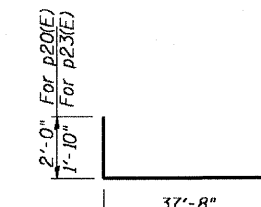


BARS nxx(E)

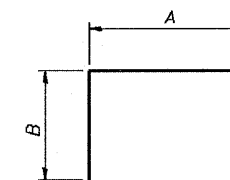


BAR u20(E) & u21(E)

BAR n20(E) n21(E) & n22(E)



BAR p20(E) & p23(E)



BARS sxx(E)

A & B DIMENSIONS

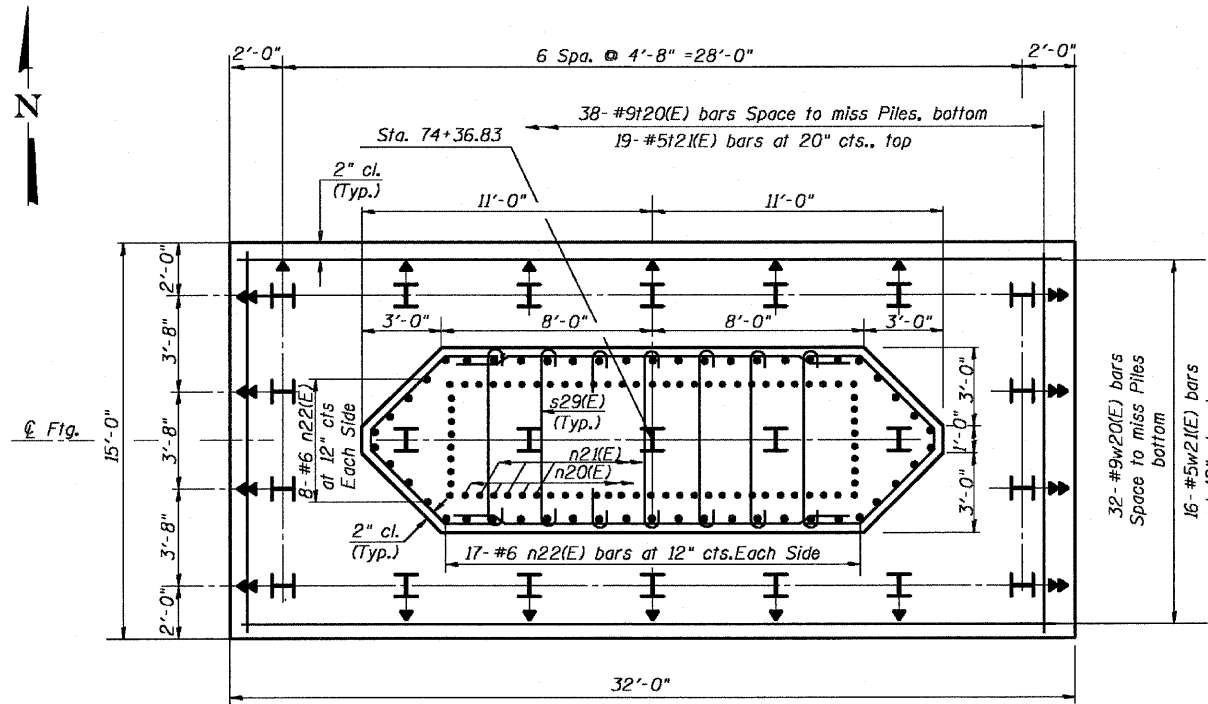
Bar	A	B
s21(E)	6'-0"	1'-0"
s22(E)	5'-8"	2'-8"
s23(E)	2'-10"	2'-6"
s27(E)	6'-0"	4'-0"

BARS sxx(E)

BILL OF MATERIAL

Bar	No.	Size	Length	Shape
h20(E)	16	#9	37'-8"	—
h21(E)	40	#6	15'-8"	—
h22(E)	10	#6	16'-0"	—
h23(E)	8	#5	19'-5"	—
n20(E)	38	#11	13'-7"	—
n21(E)	36	#11	16'-7"	—
n22(E)	50	#6	9'-3"	—
p20(E)	15	#11	41'-8"	—
p21(E)	6	#9	37'-10"	—
p22(E)	7	#9	37'-8"	—
p23(E)	18	#10	41'-4"	—
s20(E)	62	#6	20'-8"	—
s21(E)	52	#6	8'-0"	—
s22(E)	40	#6	11'-0"	—
s23(E)	48	#6	7'-10"	—
s24(E)	61	#6	23'-8"	—
s25(E)	38	#6	18'-8"	—
s26(E)	38	#6	22'-8"	—
s27(E)	38	#6	14'-0"	—
s28(E)	140	#4	5'-7"	—
s29(E)	35	#4	7'-7"	—
t20(E)	38	#9	14'-8"	—
t21(E)	19	#5	14'-8"	—
u20(E)	10	#6	11'-8"	—
u21(E)	8	#6	8'-6"	—
u22(E)	10	#6	14'-6"	—
v20(E)	38	#11	24'-7"	—
v21(E)	36	#11	21'-7"	—
w20(E)	32	#9	31'-8"	—
w21(E)	16	#5	31'-8"	—
Structure Excavation	Cu. Yd.	133		
Concrete Structures	Cu. Yd.	228		
Reinforcement Bars, Epoxy Coated	Pound	44,320		
Furnishing Steel Piles HP 12x74	Foot	770		
Driving Piles	Foot	770		
Test Pile,	Each	1		
Mechanical Splice	Each	74		
Pile Shoes	Each	23		

TOP OF PIER 2
(Showing Steps Elevations)

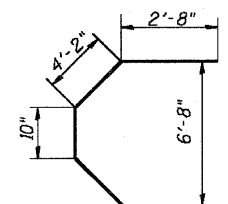
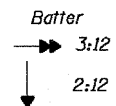


FOOTING PLAN

PILE DATA

DESIGNED - RJC
CHECKED - DEV
DRAWN - JHR
CHECKED - DEV

Type: HP12x74 with Pile Shoes
Nominal Required Bearing = 589K
Allowable Resistance Available = 196K
Est. Length: 35'
No. Production Piles: 22
No. Test Piles: 1



BAR u22(E)

Notes:

Space reinforcement in cap to miss anchor bolts.
Pour steps monolithically with cap.
For details of piles, see sheet 81 of 89.

PIER 2 DETAILS
IL. 170 F.A.P. 786 OVER
ILLINOIS RIVER AT SENECA
PUBLIC WATERS
LA SALLE COUNTY, SECTION 109 BR
STATION 79+04.42
STRUCTURE NO. 050-0246