

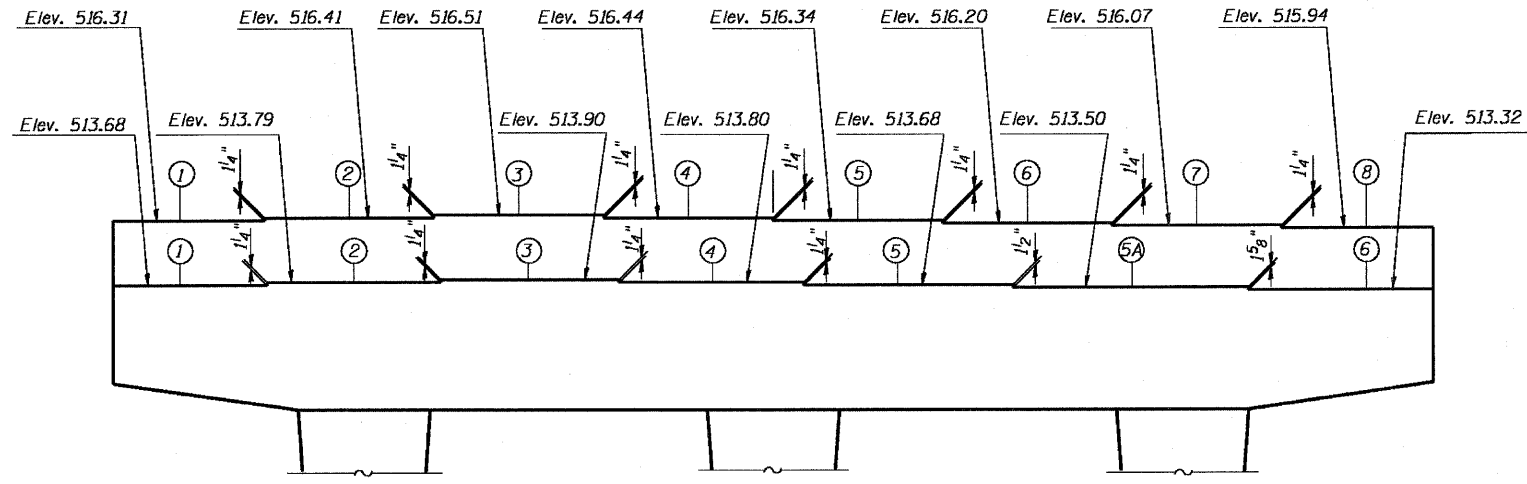
STATE OF ILLINOIS  
DEPARTMENT OF TRANSPORTATION



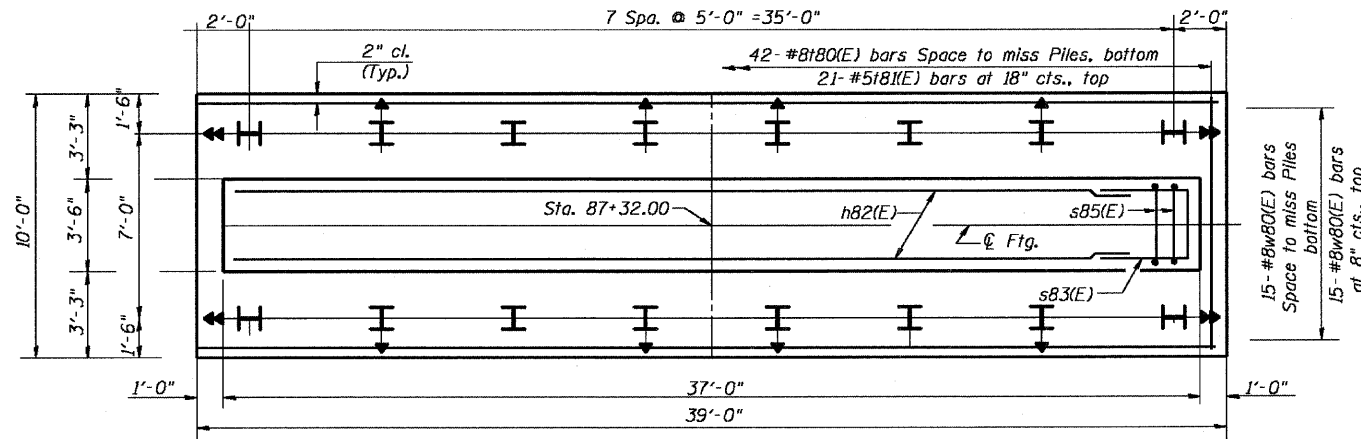
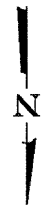
F.A.P. ROUTE NO.	SECTION	COUNTY	SHEET NO.	SHEET NO.
786	109 BR	La Salle	351	279
FED. ROAD DIST. NO. 7	ILLINOIS	FED. AID PROJECT		

Contract # 66607

SHEET NO. 79  
89 SHEETS



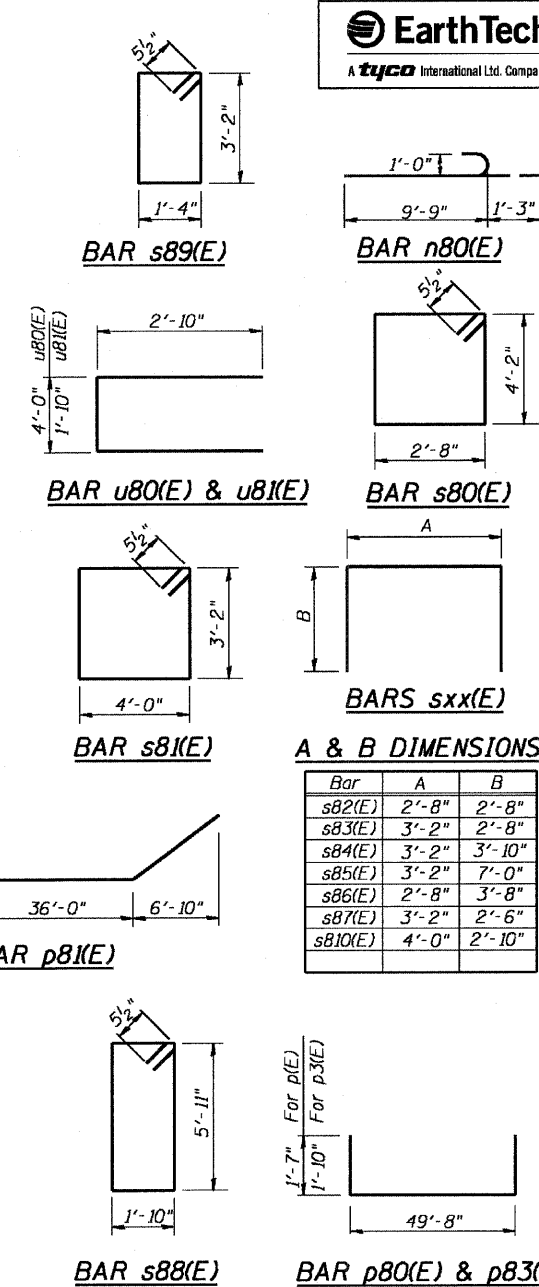
**TOP PIER 8**  
(Showing Steps Elevations)  
(Looking South)



**FOOTING PLAN**

**Batter:**  
→ 3:12  
↓ 2:12

DESIGNED - RJC
CHECKED - DEV
DRAWN - JHR
CHECKED - DEV



**A & B DIMENSIONS**

Bar	A	B
s82(E)	2'-8"	2'-8"
s83(E)	3'-2"	2'-8"
s84(E)	3'-2"	3'-10"
s85(E)	3'-2"	7'-0"
s86(E)	2'-8"	3'-8"
s87(E)	3'-2"	2'-6"
s810(E)	4'-0"	2'-10"

**BILL OF MATERIAL**

Bar	No.	Size	Length	Shape
h80(E)	12	#8	49'-8"	—
h81(E)	6	#6	36'-8"	—
h82(E)	8	#5	36'-8"	—
h83(E)	4	#5	28'-3"	—
h84(E)	4	#5	25'-4"	—
n80(E)	72	#9	11'-0"	—
p80(E)	7	#9	52'-10"	—
p81(E)	4	#8	49'-10"	—
p82(E)	8	#9	10'-4"	—
p83(E)	10	#10	53'-4"	—
s80(E)	70	#5	14'-6"	—
s81(E)	28	#5	15'-3"	—
s82(E)	36	#4	8'-0"	—
s83(E)	10	#5	7'-6"	—
s84(E)	38	#6	10'-10"	—
s85(E)	38	#6	15'-10"	—
s86(E)	42	#4	10'-0"	—
s87(E)	53	#4	7'-2"	—
s88(E)	50	#5	16'-5"	—
s89(E)	28	#5	9'-11"	—
s810(E)	28	#5	9'-8"	—
t80(E)	42	#8	9'-8"	—
t81(E)	21	#5	9'-8"	—
u80(E)	6	#6	9'-8"	—
u81(E)	6	#6	7'-6"	—
v80(E)	72	#9	16'-0"	—
w80(E)	30	#8	38'-8"	—
Structure Excavation	Cu. Yd.	124		
Concrete Structures	Cu. Yd.	141		
Reinforcement Bars, Epoxy Coated	Pound	23,240		
Furnishing Steel Piles HP 12x74	Foot	525		
Driving Piles	Foot	525		
Test Pile	Each	1		
Pile Shoes	Each	16		

**PIER 8 DETAILS**  
IL. 170 F.A.P. 786 OVER  
ILLINOIS RIVER AT SENECA  
PUBLIC WATERS  
LA SALLE COUNTY, SECTION 109 BR  
STATION 79+04.42  
STRUCTURE NO. 050-0246