

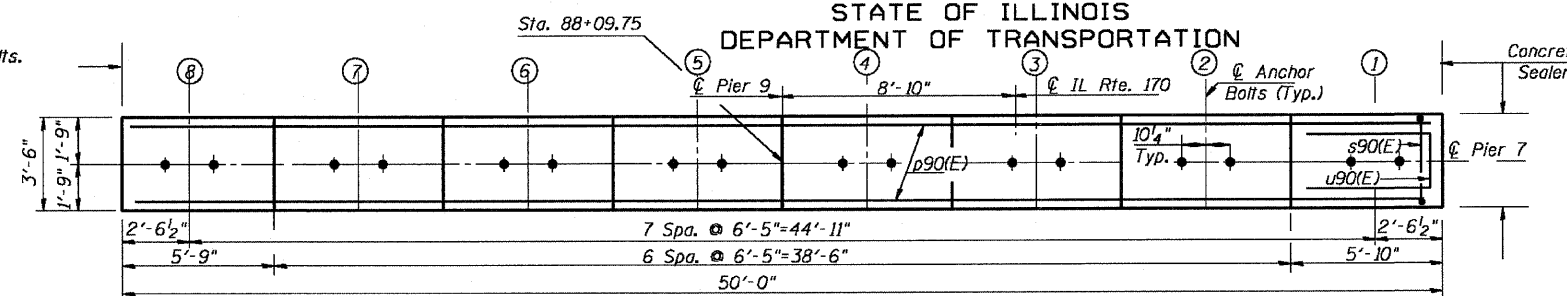
STATE OF ILLINOIS
DEPARTMENT OF TRANSPORTATION



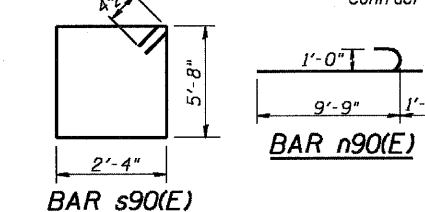
F.A.P. ROUTE NO.	SECTION	COUNTY	SHEETS	SHEET NO.	SHEET NO. 80
786	109 BR	La Salle	351	280	89 SHEETS
FED. ROAD DIST. NO. 7	ILLINOIS	FED. AID PROJECT			

Contract # 66607 **BILL OF MATERIAL**

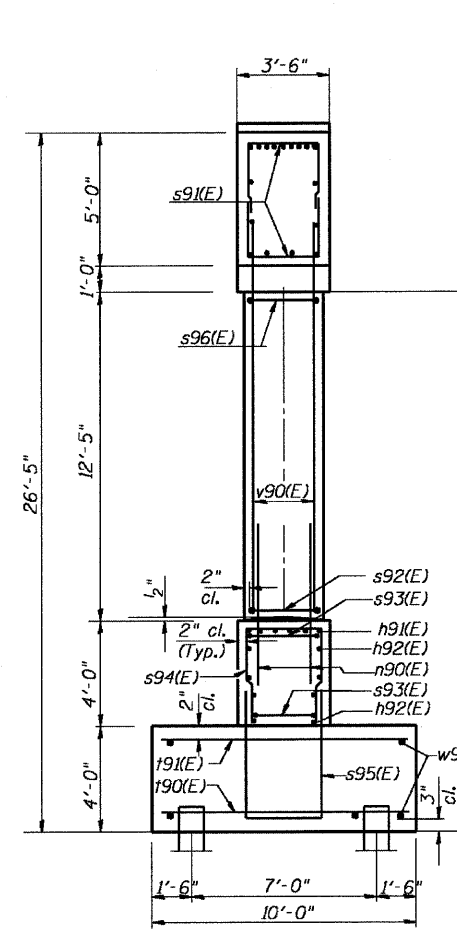
Notes:
Space reinforcement in cap to miss anchor bolts.
Pour steps monolithically with cap.
For details of piles, see sheet 81 of 89.



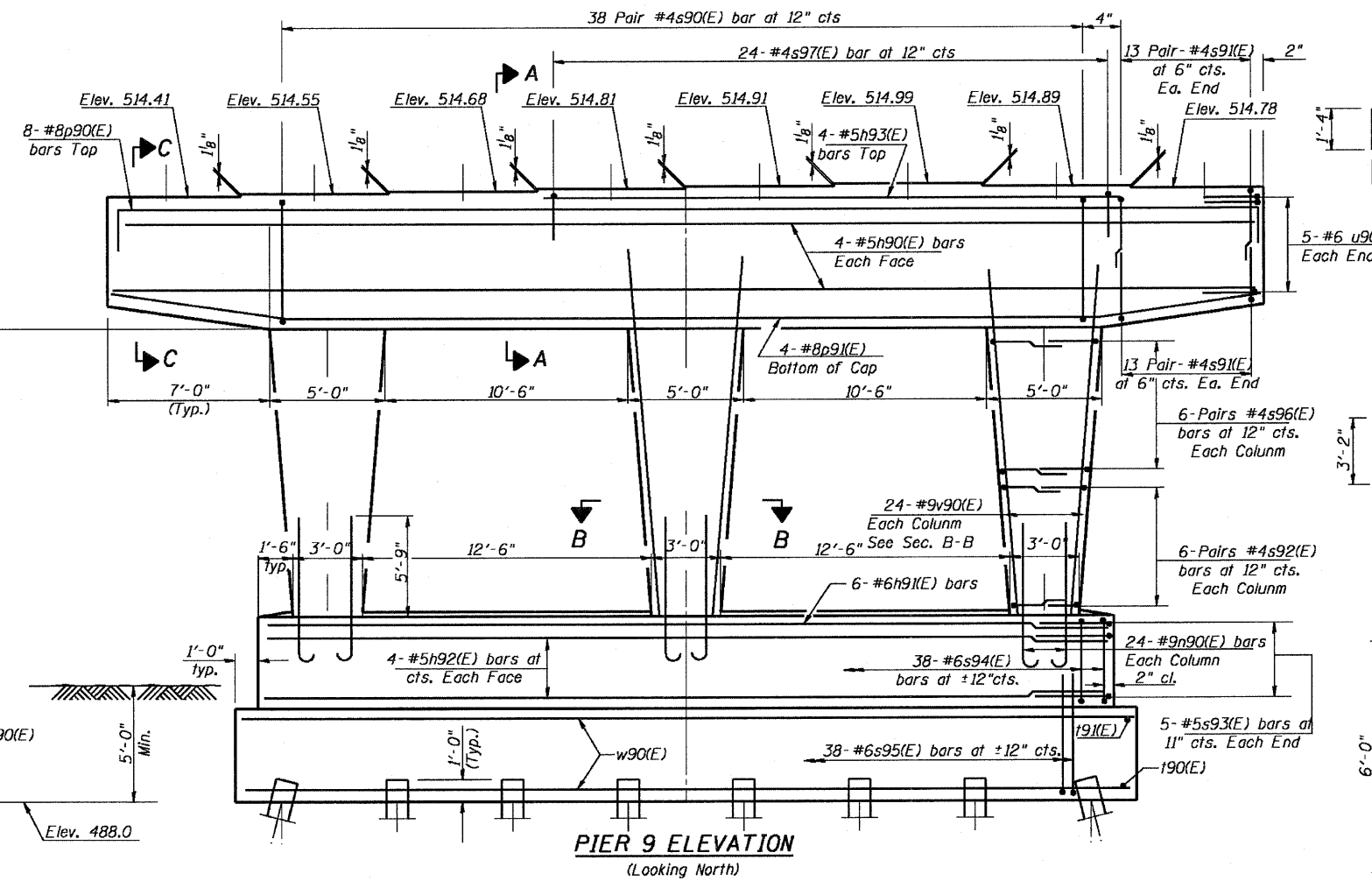
TOP PLAN



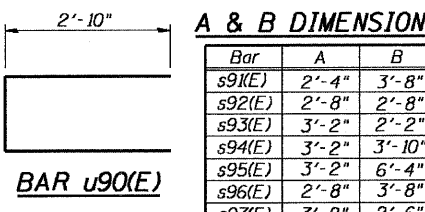
Bar	No.	Size	Length	Shape
h90(E)	8	#5	49'-8"	
h91(E)	6	#6	36'-8"	
h92(E)	8	#5	36'-8"	
h93(E)	4	#5	25'-4"	
n90(E)	72	#9	11'-0"	
p90(E)	8	#8	52'-4"	
p91(E)	4	#8	49'-10"	
s90(E)	76	#4	16'-9"	
s91(E)	104	#4	9'-8"	
s92(E)	36	#4	8'-0"	
s93(E)	10	#5	7'-6"	
s94(E)	38	#6	10'-10"	
s95(E)	38	#6	15'-10"	
s96(E)	36	#4	10'-0"	
s97(E)	24	#4	8'-2"	
u90(E)	10	#6	8'-10"	
v90(E)	72	#9	15'-9"	
w90(E)	30	#8	39'-8"	



END VIEW

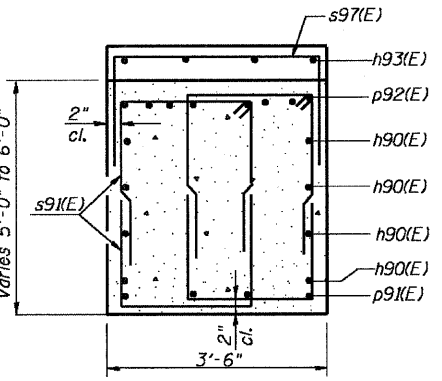


PIER 9 ELEVATION
(Looking North)



SECTION A-A

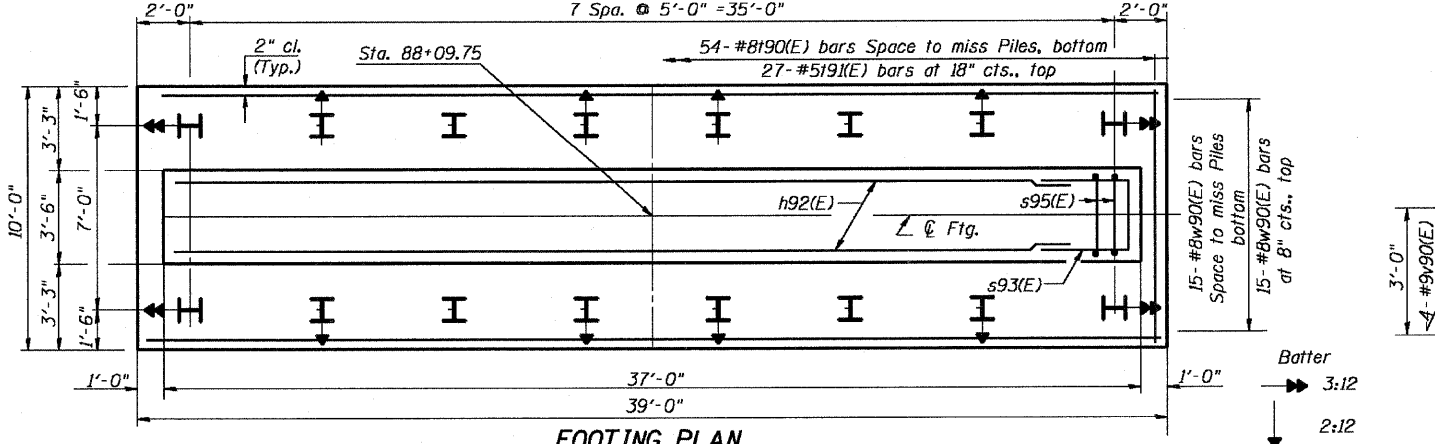
SECTION B-B



SECTION C-C

PILE DATA
Type: HP12x74 with Pile Shoes
Nominal Required Bearing = 589K
Allowable Resistance Available = 196K
Est. Length: 35'
No. Production Piles: 15
No. Test Piles: 1

DESIGNED - RJC
CHECKED - DEV
DRAWN - JHR
CHECKED - DEV



FOOTING PLAN

PIER 9
IL. 170 F.A.P. 786 OVER
ILLINOIS RIVER AT SENECA
PUBLIC WATERS
LA SALLE COUNTY, SECTION 109 BR
STATION 79+04.42
STRUCTURE NO. 050-0246