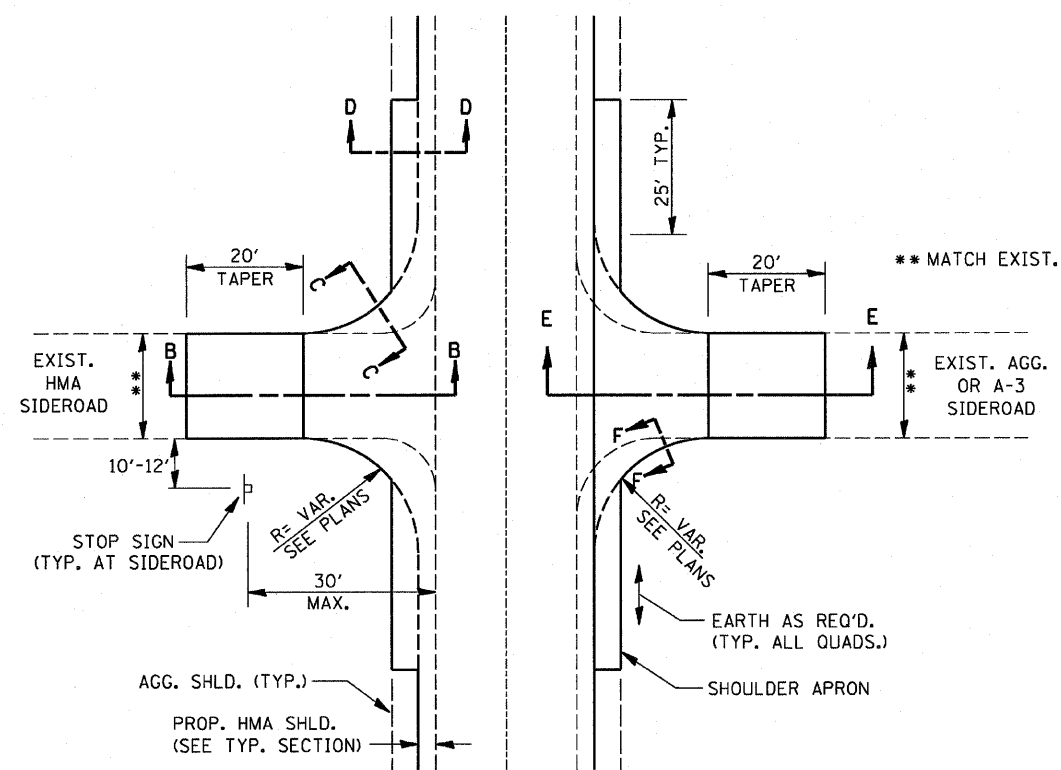
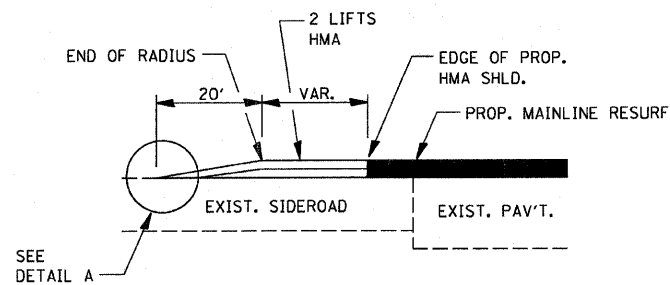


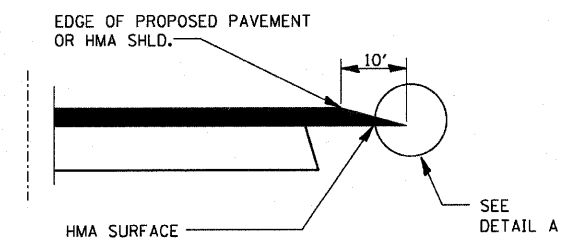
F.A.P. RTE.	SECTION	COUNTY	TOTAL SHEETS	SHEET NO.
786	(109) BR	LASALLE	351	291
STA.		TO STA.		
FED. ROAD DIST. NO.		ILLINOIS FED. AID PROJECT		



SIDEROAD DETAIL

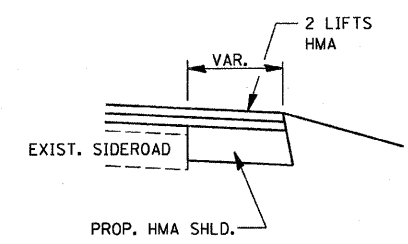


SECTION B-B



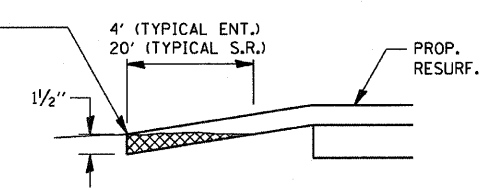
SECTION A-A

DETAILS AT ENTRANCES

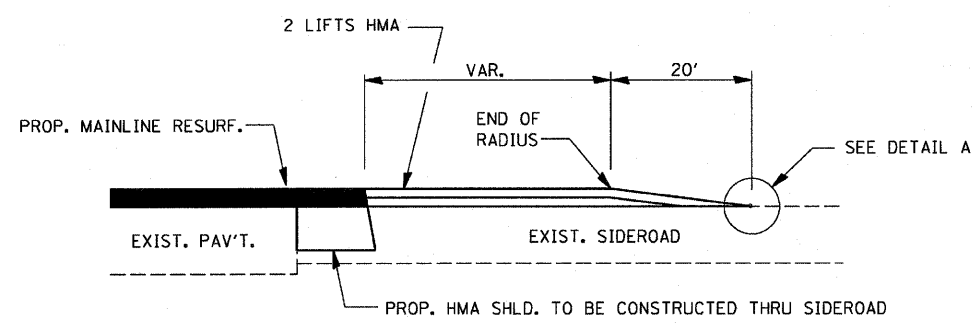


SECTION C-C

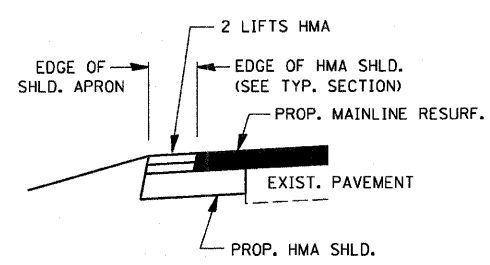
THE COST OF REMOVAL AT EXISTING HMA OR P.C.C. LOCATIONS SHALL BE PAID FOR PER SQ. YD. BY THE APPROPRIATE PAY ITEM. REMOVAL AT THE EXISTING AGG. LOCATIONS SHALL BE INCIDENTAL TO THE HMA. A-3 LOCATIONS SHALL BE FEATHER TAPERED.



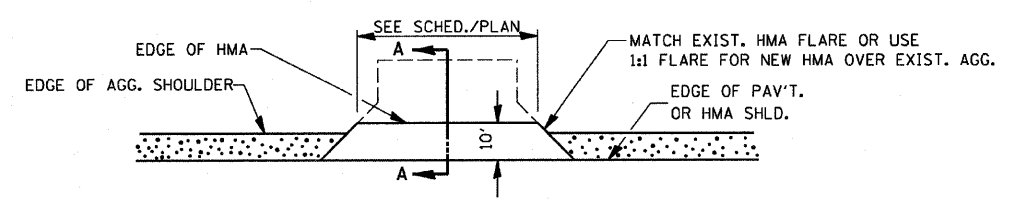
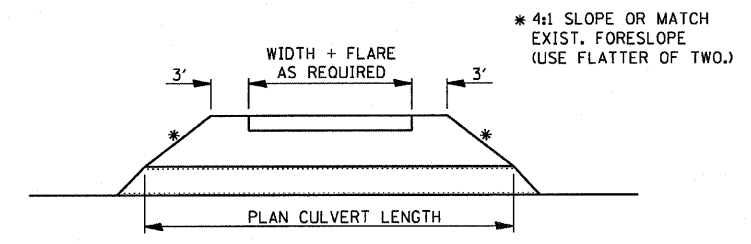
DETAIL A



SECTION E-E

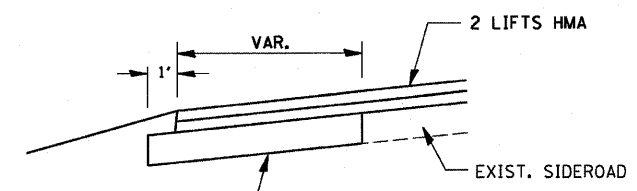


SECTION D-D



PLAN AT PRIVATE & COMMERCIAL ENTRANCES

(DO NOT RESURFACE FIELD ENTRANCES)



AGG. BASE CSE., TY. A - 8"
NOTE: SHOULDER APRON TO BE CONSTRUCTED THE SAME AS RADIUS WIDENING.

SECTION F-F

PLOT DATE = 10/14/2007
FILE NAME = #FILES
PLOT SCALE = #SCALE
USER NAME = #PROJECT

REVISIONS	
NAME	DATE

ILLINOIS DEPARTMENT OF TRANSPORTATION

DISTRICT 3 STANDARDS

SCALE: 1" = 20'
DATE: OCTOBER, 2007
DRAWN BY: CJO
CHECKED BY: JCL