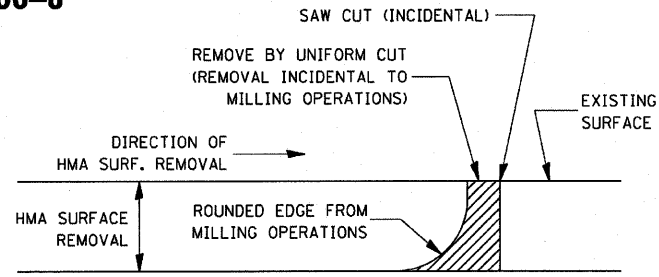
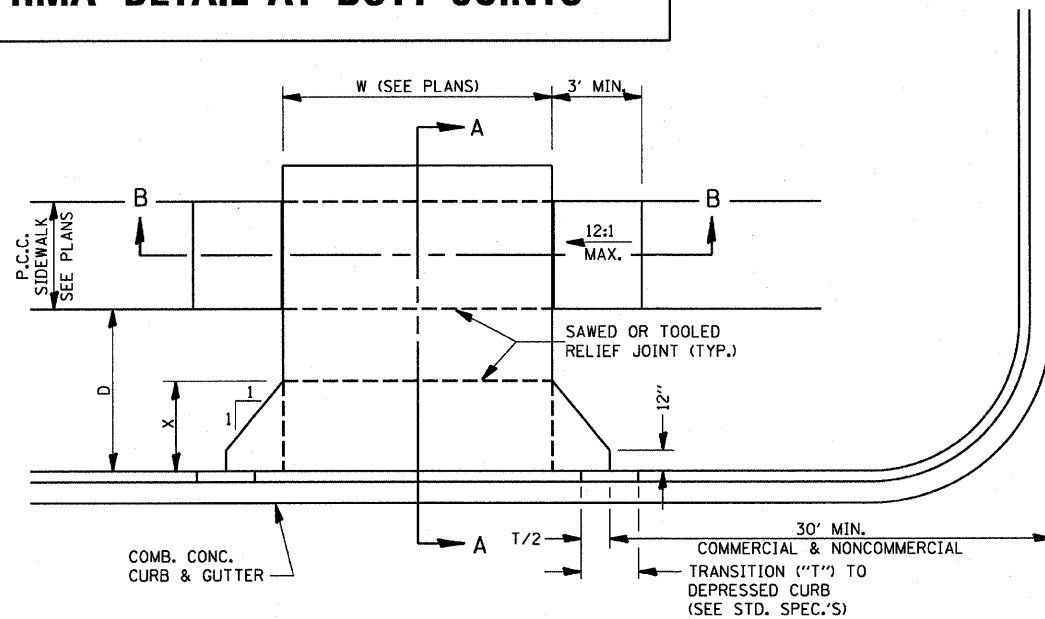


406-8

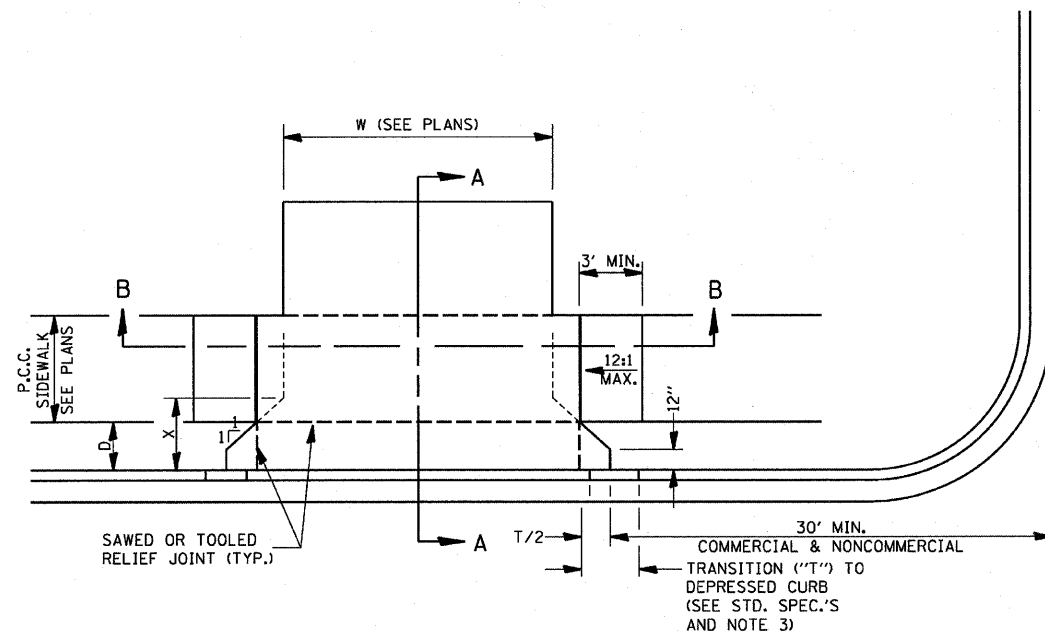


NOTE:
WHEN MILLING OPERATIONS PRODUCE A ROUNDED EDGE, THEN A SAW CUT SHALL BE USED TO MANUFACTURE A PERPENDICULAR EDGE AS SHOWN IN THE DETAIL. THE ENGINEER SHALL BE THE SOLE JUDGE CONCERNING THE USE OF THIS DETAIL

HMA DETAIL AT BUTT JOINTS



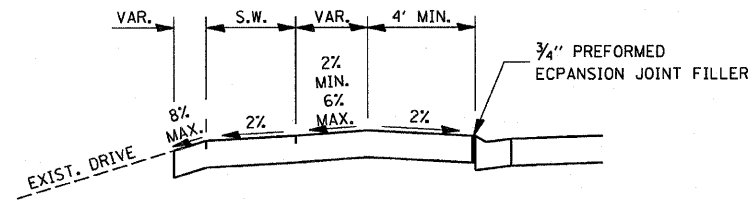
CASE I (D ≥ X)



CASE I (D < X)

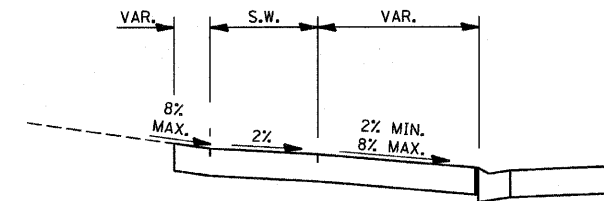


CONTRACT NO.			
F.A.P. RTE.	SECTION	COUNTY	TOTAL SHEET NO.
786	(109) BR	LASALLE	351 292
STA.		TO STA.	
FED. ROAD DIST. NO.		ILLINOIS FED. AID PROJECT	

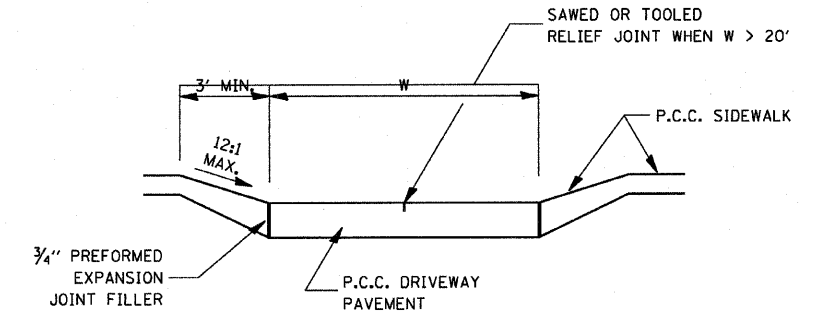


DEPRESSED ENTRANCE *
SECTION A-A

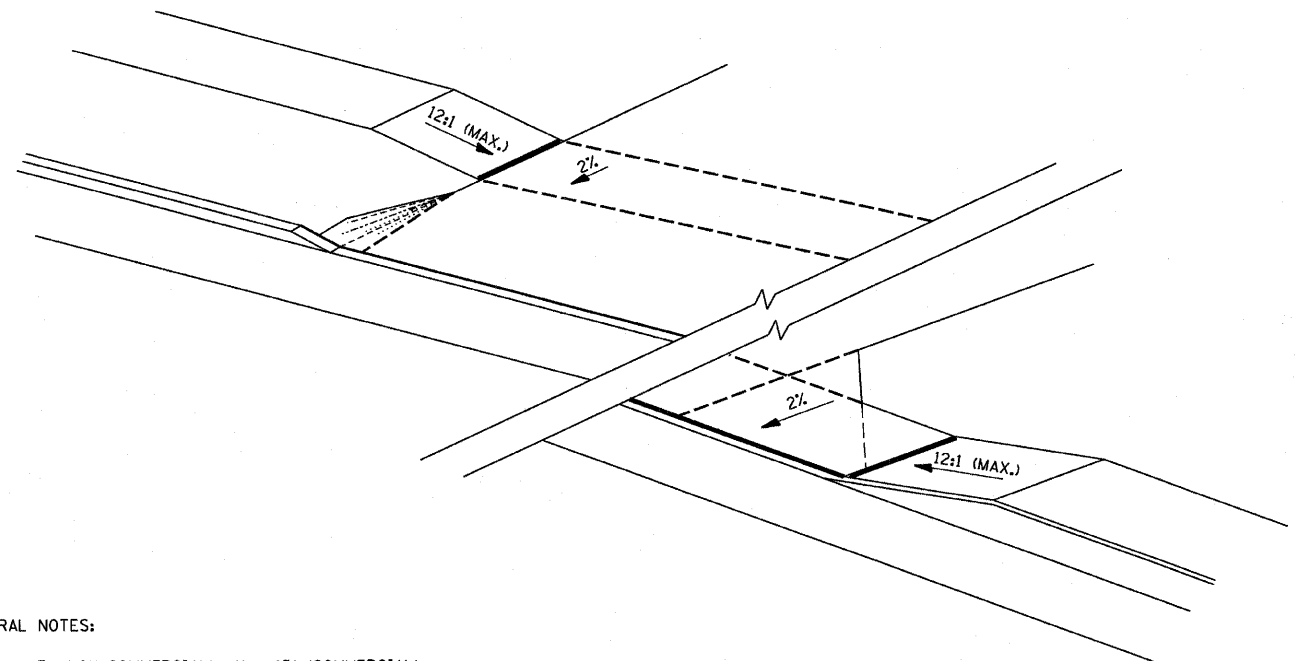
*(SEE X-SECTIONS FOR ENTRANCE PROFILE.)



ELEVATED ENTRANCE *
SECTION A-A



SECTION B-B



GENERAL NOTES:

- X = 7' (NON-COMMERCIAL) X = 15' (COMMERCIAL)
- COST OF EXPANSION JOINTS AND RELIEF JOINTS SHALL BE INCLUDED IN THE COST OF THE P.C.C. DRIVEWAY PAVEMENT.
- AS THE DIMENSION "D" APPROACHES ZERO, THE TRANSITION TO DEPRESSED CURB SHALL BE NO STEEPER THAN 12:1

PCC URBAN ENTRANCES

REVISIONS	
NAME	DATE

ILLINOIS DEPARTMENT OF TRANSPORTATION
DISTRICT 3 STANDARDS

SCALE: 1" = 20"
DATE: OCTOBER, 2007

DRAWN BY: CJO
CHECKED BY: JCL

PLOT DATE = 10/14/2007
FILE NAME = REFLECT
PLOT SCALE = ESCALE
USER NAME = pro.net

423-1